

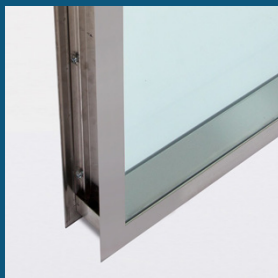


## BioSafe® Cleanroom Windows



**BioSafe® Stainless Steel  
Framed Window**

Framed BioSafe® model feature a smooth, stainless steel lip that fits tightly against the wall to minimize crevices

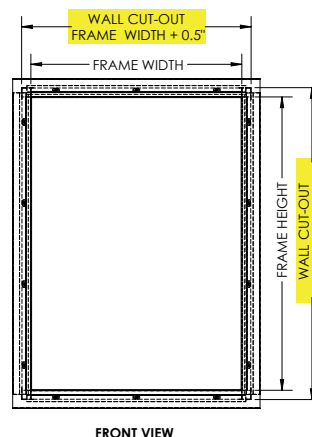
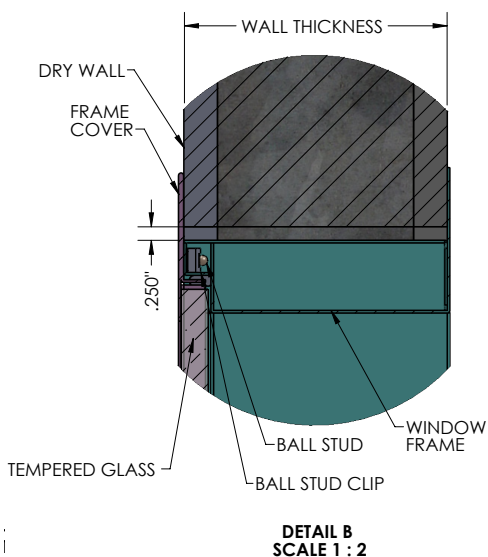
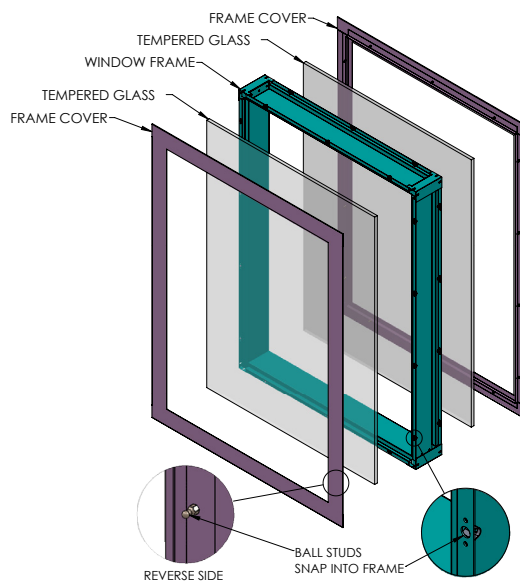
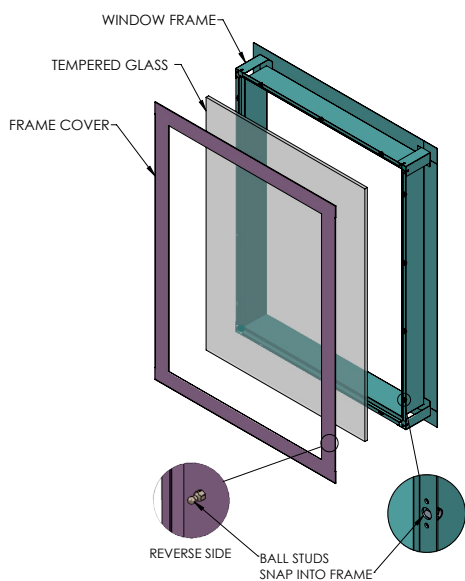


**BioSafe® Framless  
Window**

Frameless BioSafe window feature glass that sits perfectly flush with the wall surface for the most critical applications



## Product Data & Submittal Sheet



## DESCRIPTION

- BioSafe® design minimizes cracks and crevices for quick and easy sterilization
- Framed BioSafe® model feature a smooth, stainless steel lip that fits tightly against the wall to minimize crevices
- Double-pane design mounts flush on both sides and is ideal for installation between two clean rooms
- Suitable for cleanrooms, medical facilities, labs and other clean, aseptic environments
- Stainless steel resists harsh biocides for frequent sterilization
- Flush-mount design minimizes crevices where contaminants can collect
- Designed for quick, easy installation in a variety of wall materials and thicknesses
- Mounting system reduces fasteners for a showcase appearance
- Since regulations vary considerably in different locations, Terra assumes no responsibility for meeting local building regulations, including fire and seismic codes
- Check your local planning department to see what regulations apply to your installation

## BASIC UNIT CONFIGURATION

### Frame Size:

- ☐ 2' x 3'
- ☐ 3' x 3'
- ☐ 4' x 3'
- ☐ 4' x 4'
- ☐ 5' x 3'
- ☐ Custom \_\_\_\_\_

### Wall Thickness:

- ☐ 4.875"
- ☐ Custom \_\_\_\_\_

### Window Pane Type:

- ☐ Double
- ☐ Single

### Glazing Type:

- ☐ Tempered Glass
- ☐ Polycarbonate
- ☐ Insulated
- ☐ Custom \_\_\_\_\_

## REQUIRED ROUGH OPENING

FOR WINDOW FRAME  
(WIDTH +0.5") x (HEIGHT +0.5")  
\_\_\_\_\_ W x \_\_\_\_\_ H

## MINIMUM DIMENSIONS

12" x 12" x 3"

## MAXIMUM DIMENSIONS

96" x 55" x 12"

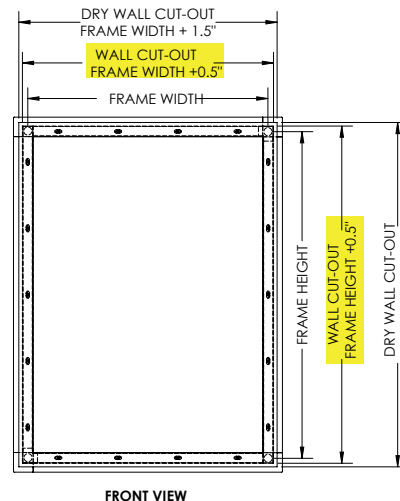
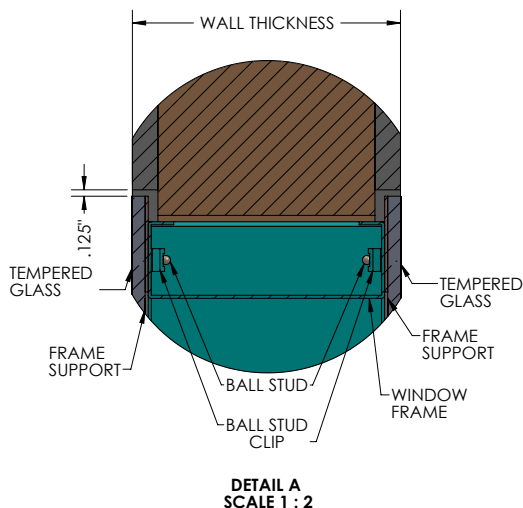
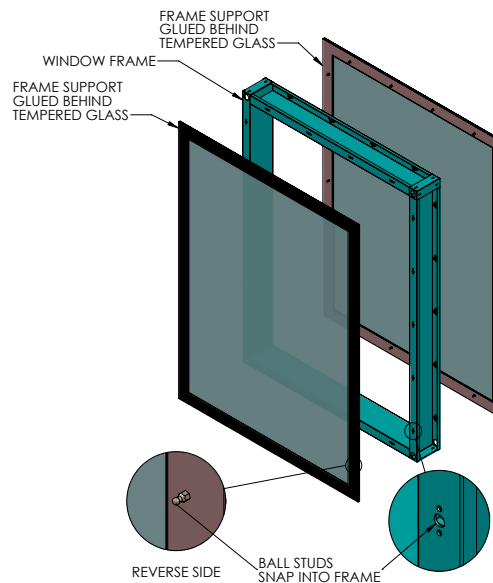
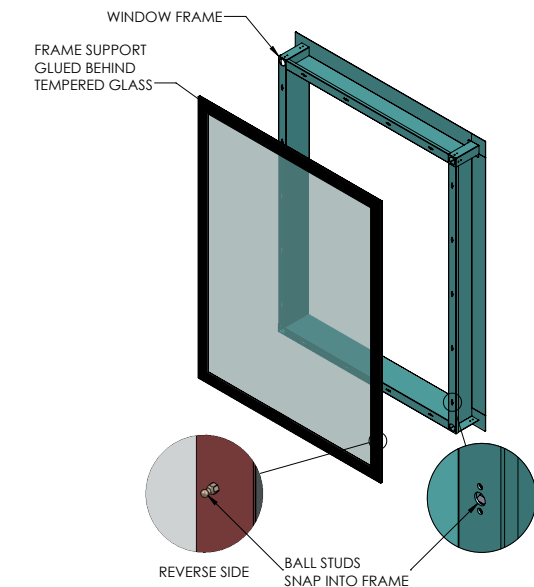
## Additional Options:

- ☐ Powder Coated Frame
- ☐ BioSafe® Switch Glass
- ☐ Internal Window Blinds

# BioSafe® Frameless Cleanroom Windows



Product Data & Submittal Sheet



## DESCRIPTION

- BioSafe® design minimizes cracks and crevices for quick and easy sterilization
- Frameless BioSafe® model feature glass that sits perfectly flush with the wall surface for the most critical applications
- Double-pane design mounts flush on both sides and is ideal for installation between two clean rooms
- Suitable for cleanrooms, medical facilities, labs and other clean, aseptic environments
- Interior mounting hardware composed of corrosion-resistant 316L stainless steel
- Stainless-steel liner for wall cut-out (no visible hardware)
- Faux black border applied underneath the glass surface
- Flush-mount design minimizes crevices where contaminants can collect
- Designed for quick, easy installation in a variety of wall materials and thicknesses
- Mounting system reduces fasteners for a showcase appearance
- Glass may be inset into standard gypsum walls or surface-mounted. Use FDA-approved seam treatment as needed
- Since regulations vary considerably in different locations, Terra assumes no responsibility for meeting local building regulations, including fire and seismic codes
- Check your local planning department to see what regulations apply to your installation

## BASIC UNIT CONFIGURATION

### Frame Size:

- ☐ 2' x 3'
- ☐ 3' x 3'
- ☐ 4' x 3'
- ☐ 5' x 3'
- ☐ Custom \_\_\_\_\_

### Wall Thickness:

- ☐ 4.875"
- ☐ Custom \_\_\_\_\_

### Window Pane Type:

- ☐ Double
- ☐ Single

### Glazing Type:

- ☐ Tempered Glass
- ☐ Polycarbonate
- ☐ Insulated
- ☐ Custom \_\_\_\_\_

### Aesthetic Border:

- ☐ Black Border
- ☐ White Border

## REQUIRED ROUGH OPENING FOR WINDOW FRAME

(WIDTH +0.5") x (HEIGHT +0.5")  
\_\_\_\_\_ W x \_\_\_\_\_ H

## MINIMUM DIMENSIONS

12" x 12" x 3"

## MAXIMUM DIMENSIONS

96" x 55" x 12"

## Additional Options:

- ☐ BioSafe® Switch Glass
- ☐ Internal Window Blinds

