



TERRA UNIVERSAL

Critical Environment Solutions



BioSafe[®] Wall Panel System

cGMP-Compliant

ISO-Rated

UL-Tested

Rapid-Install

Fully Coved

Leak-Rated

FM Approved

Scalable

 **TERRA
UNIVERSAL.COM**

Tel: +1 (714) 578-6100

Email: info@terrauniversal.com

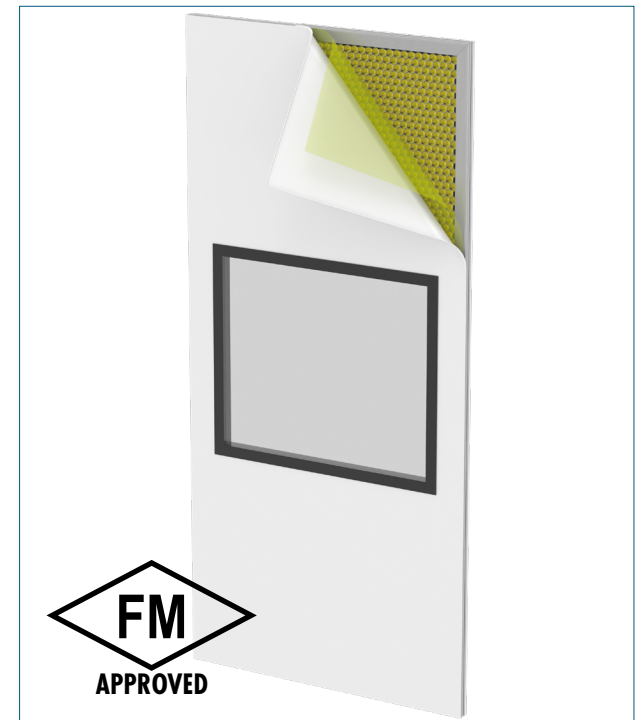
Wall Panels

Terra's BioSafe® Wall Panel System is lightweight, cost-effective, and easy to install. Compliant with cGMP, GLP, and ASTM standards, BioSafe® wall panels feature sealed joints with cold welded seams to create a monolithic finish that eliminates cracks and crevices where microbes can colonize. The pre-fabricated, progressive wall panel system features seamless and covered transitions between the ceiling, walls, and floors for an easy to sterilize and airtight closed system to prevent contamination influx.

Wall and ceiling panels with aluminum honeycomb cores are FM certified for fire and smoke safety to help protect personnel, equipment, and the facility. They are FM 4880 Approved with unlimited height and FM 4882 Approved with a food/pharmaceutical rating. Panels with aluminum honeycomb cores can be encased with 304/316 stainless steel, or a uPVC-laminated steel. Both adhere to ISO 14644-1 standard for ISO class 5 and below environments, ensuring a fully flush surface that is durable and easy to clean.

All panels are installed onto an adjustable-height, recessed channel base to ensure a level and flush interface between the wall and the finished floor. Wall panels also include a plenum space to house utility and filling lines, providing the user with convenient access to gas, vacuum and water connections, along with duplex outlets, control panels, and phone jacks. Pre-formed corner pieces eliminate the need for surface capping or flashing.

- Max Panel Size: 4' W x 14' H x 2' D (Nominal)
- Core: Aluminum honeycomb
- Shell: uPVC laminated steel
- Compliant with cGMP grades A, B, C and D
- Non-flammable
- FM Approved, FM 4880, Class 1 Fire Rating for Interior Walls and Ceilings
- FM Approved, FM 4882, Class 1 Fire Rating for Interior Walls and Ceilings, Smoke Sensitive, in Pharmaceutical & Storage Occupancies
- Flush, smooth finish resists corrosion, moisture, solvents and disinfectants
- Plenum space for utilities, water lines, gas connections
- Ultimate load (4'W x 14'H): 1500 lb (680kg)
- Max Distributed Load (4'W x 14'H): 0.19psi (1310N/m²)
- Suitable for operating temperature up to 60° Celsius
- Maximum window size 36" W x 36" H

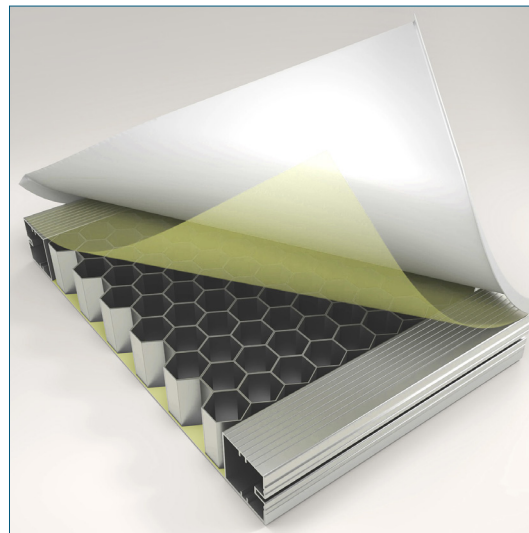


Walkable Ceiling System

Terra's BioSafe® Ceiling Panel System is composed of the same pre-engineered, pre-fabricated panels featured in our BioSafe® Wall Panel System, ensuring seamless wall-to-ceiling integrations. The ceiling panels are available with standard cutouts for HEPA-filtered fan units, lighting, sprinkler heads, video cameras, fire alarms, electrical drop, and gas penetrations. The entire ceiling system is walkable, allowing for easy access to equipment installed above the cleanroom and streamlined maintenance operations, such as HEPA filters change-outs. The ceiling panels maintain a flush, seamless surface for easy wipe-down or spray-down. The ceiling system is self-supported or suspended using a turnbuckle and hanger assembly, eliminating the need for a t-grid structure. The ceiling panels meet cGMP, GLP, ISO 14664-1 and ASTM standards.



- Fully Walkable
- Cut-outs for FFUs, lights, sprinklers, HVAC
- Self-supported or suspended from facility ceiling
- Smooth, flush finish for easy spray-downs
- Seamless wall-to-ceiling integrations



Wall Panel Performance Tests

Test Method	Test Name	Facer: uPVC Core: Aluminum Honeycomb	Facer: uPVC Core: Foam	Facer: Stainless Steel Core: Aluminum Honeycomb	Facer: Stainless Steel Core: Foam
ASTMA1122	T-Bend	0T no pinch off	0T no pinch off	N/A - no coating	N/A - no coating
ASTM D968	Acid Resistance	1,020 liters of falling sand	1,020 liters of falling sand	N/A - no coating	N/A - no coating
	Surface Resistivity	$\leq 10^{13}$ ohm/sq	$\leq 10^{13}$ ohm/sq	0 ohms/sq	0 ohms/sq
ASTM D3359	Adhesion	5	5	N/A - no coating	N/A - no coating
ASTM D3363	Film Hardness	greater than 9H	greater than 9H	N/A - no coating	N/A - no coating
ASTM D4060	Taber Abrasion	No wear through at 500 cycles, CS10, 1,000 grams per wheel	No wear through at 500 cycles, CS10, 1,000 grams per wheel	No wear through at 500 cycles, CS10, 1,000 grams per wheel	No wear through at 500 cycles, CS10, 1,000 grams per wheel
ASTM D2794	Impact	164 in-lbs	144 in-lbs	172 in-lbs	184 in-lbs
ASTM D3167	Climbing Drum Peel	15.5 lb/inch	10.6 lb/inch	11.7 lb/inch	7.7 lb/inch
ASTM E595	Outgassing	0.1 ppm/mg	Not tested	0.4 ppm/mg	Not tested
ASTM D1308	Effect of household chemicals and agents	No Stain	No Stain	No Stain	No Stain
ASTM D4828	Practical washability of organic coatings	No Change	No Change	No Change	No Change
ASTM D543-21	Resistance of plastics - 70% IPA - immersion, 7 days	No appearance, blister, peel, or dimensional changes	No appearance, blister, peel, or dimensional changes	No appearance, blister, peel, or dimensional changes. Detachment from core	No appearance, blister, peel, or dimensional changes. Detachment from core.
ASTM D543-21	Resistance of plastics - 1% bleach - immersion, 7 days	No appearance, blister, peel, or dimensional changes	No appearance, blister, peel, or dimensional changes	No appearance, blister, peel, or dimensional changes. Detachment from core	No appearance, blister, peel, or dimensional changes
ASTM D543-21	Resistance of plastics - Spor-Klenz - immersion, 7 days	Yellow staining on panels. Severe pitting to aluminum.	Yellow staining on panels. Severe pitting to aluminum.	Iridescent color change. Severe pitting to aluminum. No blister, peel, or dimensional changes. Detachment from core	Iridescent color change. No blister, peel, or dimensional changes. Detachment from core

ASTM A1122 evaluates the quality of metallic-coated steel sheets. It involves bending the steel sheet to a specific angle to check if the coating is adhering properly to the metal substrate.

ASTM D968 measures the abrasion resistance of organic coatings. It involves using a falling abrasive, such as sand, to test how well a coating can withstand wear and tear.

Surface resistivity measures how well a material resists electrical current flowing across its surface, typically expressed in ohms per square. Lower values indicate higher conductivity.

ASTM D3359 evaluates the adhesion of coatings to substrates using a cross-cut tape test.

ASTM D3363 measures the hardness of coatings.

ASTM D4060 measures the abrasion resistance of coatings. It involves subjecting a coated sample to repeated abrasion cycles simulating real-world wear and tear.

ASTM D2794 measures impact resistance of organic coatings. It involves applying a coating to a metal panel and then dropping a weight from a certain distance to see how much the coating can withstand before cracking.

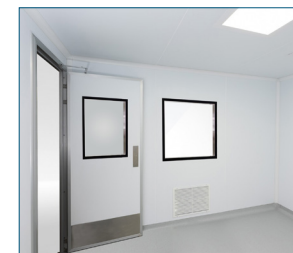
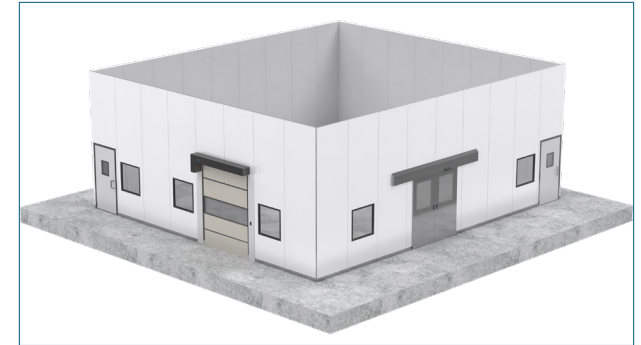
ASTM D3167 measures the average peel strength or force of an adhesive and bonding agent. In this test, the flexible adherend is bent around a rolling drum allowing for a more gradual bend than a normal peel test.

ASTM E595 measures the outgassing properties of materials in vacuum environments.

ASTM D543-21 evaluates chemical resistance of plastic materials, and their ability to withstand exposure to aggressive substances.

uPVC Sheet Metal Properties

Physical Characteristics	Test Standard	uPVC Sheet Metal
Nominal thickness (µm)	EN 13523-1	120
Gloss (%)	EN 13523-2	8-15
Flexibility (minimum bend radius)	EN 13523-7	0T
Pencil hardness	EN 13523-4	>4H
Scratch resistance (g)	EN 13523-12	4000
Salt spray resistance (hrs)	EN 13523-8	500
Humidity (hrs)	EN 13523-26	1500
Minimum continuous temperature (°C)	-	-40
Maximum continuous temperature (°C)	-	60
CPI Category	EN 10169	CPI 5
Complies with EU legislation for foodsafety and contact with food products	-	Yes
Reaction to fire	EN 13501- 1	A2-s1,d0* (120µ) B-s1,d0* (150µ)



Approved by BioQuell

Bioquell, an Ecolab solution, is a well established global leader providing validated and compliant surface and airborne bio-decontamination for the pharmaceutical, life science and healthcare sectors. Used globally, it eradicates biological contaminants including problematic bacteria, viruses and fungi on every exposed surface. Viruses can contaminate and survive for long periods on surfaces. Therefore, effective disinfection is essential for stopping transmission.

Bioquell's Hydrogen Peroxide Vapour is a vapour-phase disinfection method. It achieves a level of efficacy unmatched by standard cleaning practices and other disinfection technologies. They regularly conduct tests to determine the effect of hydrogen peroxide vapour on various commonly encountered materials.

Food safe pre-finished steel products produced by Tata Steel have been tested for compatibility with Bioquell vaporous H₂ O₂ (HPV-AQ).

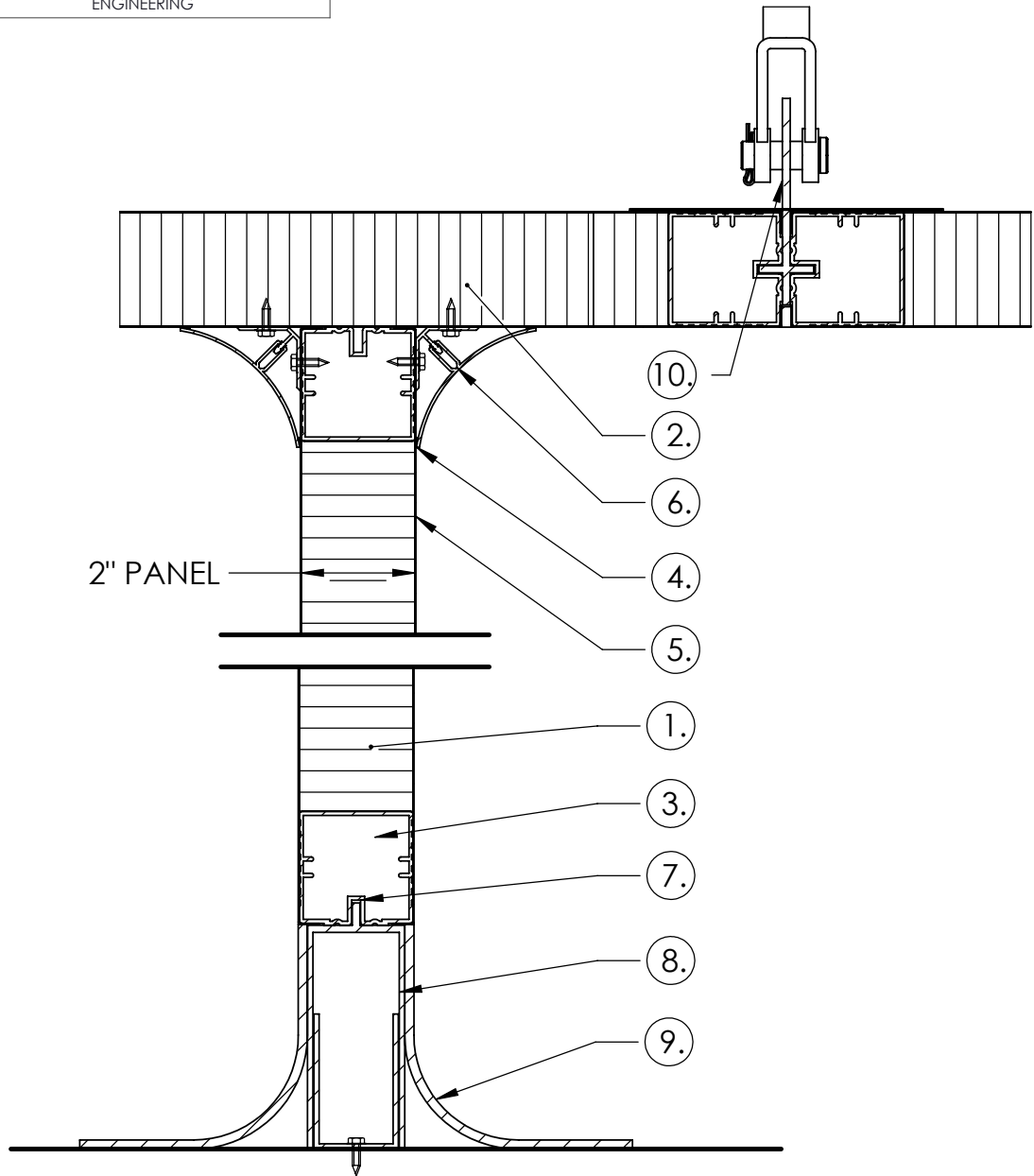
Bioquell confirms that uPVC sheet metal was unaffected by the accelerated test demonstrating suitability for use with a vapour produced using a 35% concentration of Hydrogen Peroxide.

TERRA UNIVERSAL


Tel: +1 (714) 578-6100

Email: info@terrauniversal.com

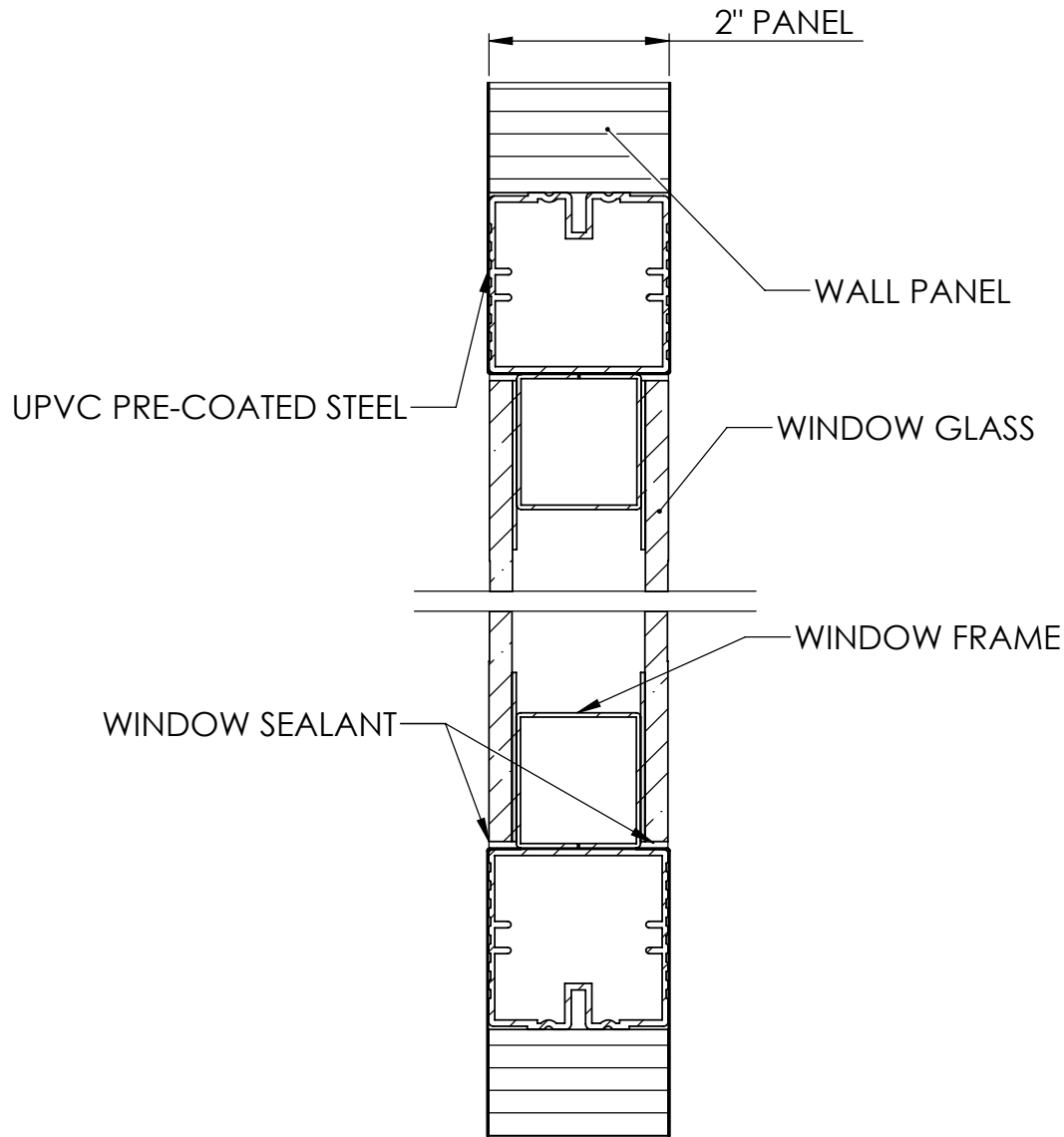
**WALL PANEL - CEILING PANEL
JUNCTION
(SECTION VIEW)**




- ① WALL PANEL
- ② CEILING PANEL
- ③ RACEWAY FOR WIRES/CABLES
- ④ SMOOTH WHITE PVC COLD WELD
- ⑤ UPVC PRE-COATED STEEL
- ⑥ PVC COVE ASSEMBLY
- ⑦ FLOOR TRACK JOINT SPLINE
- ⑧ ADJUSTABLE FLOOR PLINTH
- ⑨ FLOORING WITH COVING FORMER
(BY FLOORING CONTRACTOR)
- ⑩ CEILING SUSPENSION SYSTEM

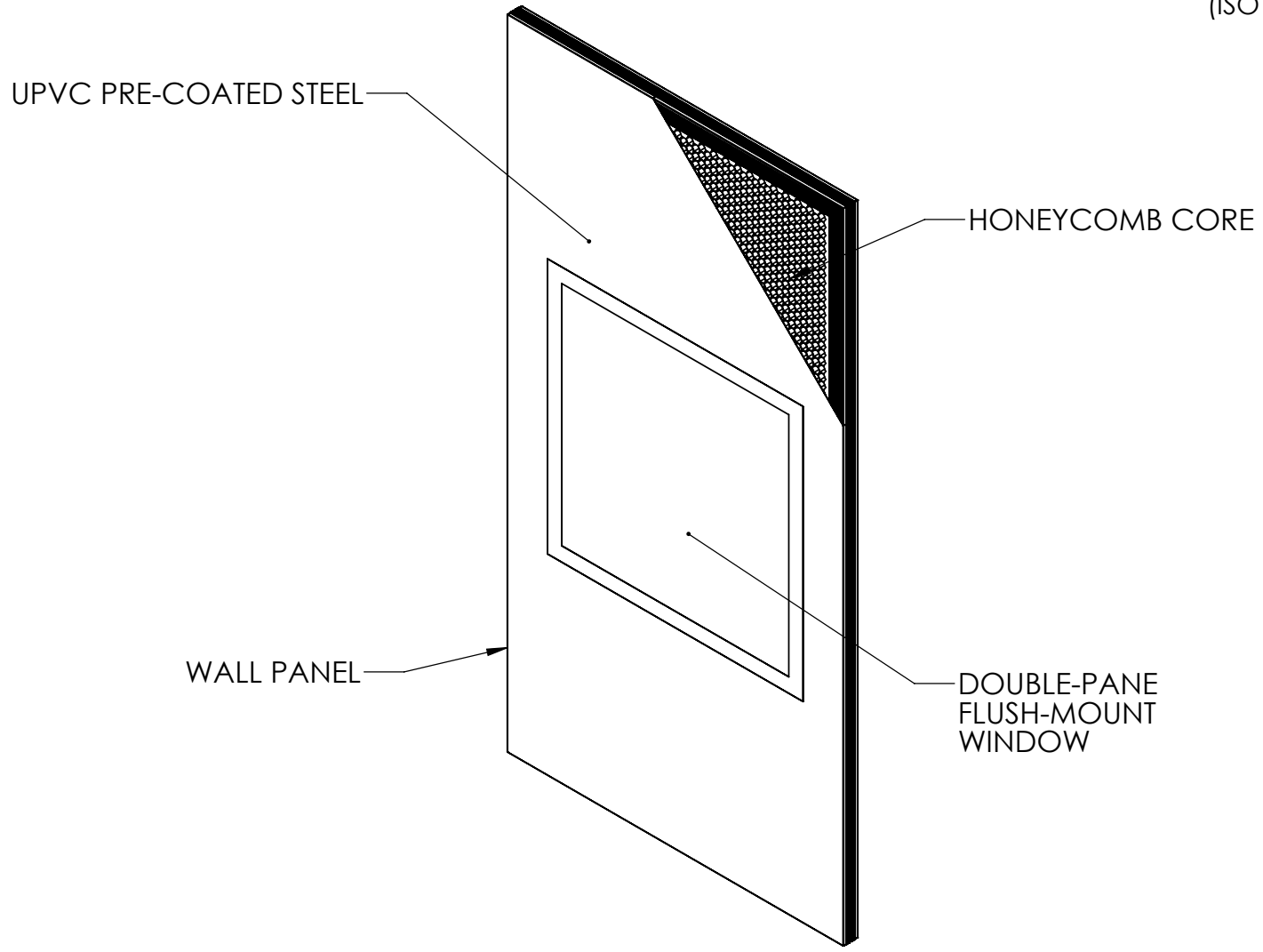
REVISIONS				MATERIAL SPEC.	FINISH SPEC.	UNLESS OTHERWISE SPECIFIED, DIMENSIONS ARE IN INCHES	 Terra Universal	TITLE BIOSAFE(R) WALL PANEL SYSTEM
RV#	DESCRIPTION	DATE	BY					
NC	INITIAL RELEASE	1/30/25	JLE			TOLERANCES ON: .XX DECIMALS ± .03 X°± 1° .XXX DECIMALS ± .010 X/X ± 1/64		
						SIGNATURES		
						ISSUED BY: JOSE LUIS ESPARZA	DATE	1/30/25
						REF #: TU15668		
							<small>PROPRIETARY & CONFIDENTIAL ALL RIGHTS RESERVED BY TERRA UNIVERSAL DISCLOSURE OR COPYING PROHIBITED</small>	SCALE SHEET 1 OF 20


**WALL PANEL WITH WINDOW
(SECTION VIEW)**

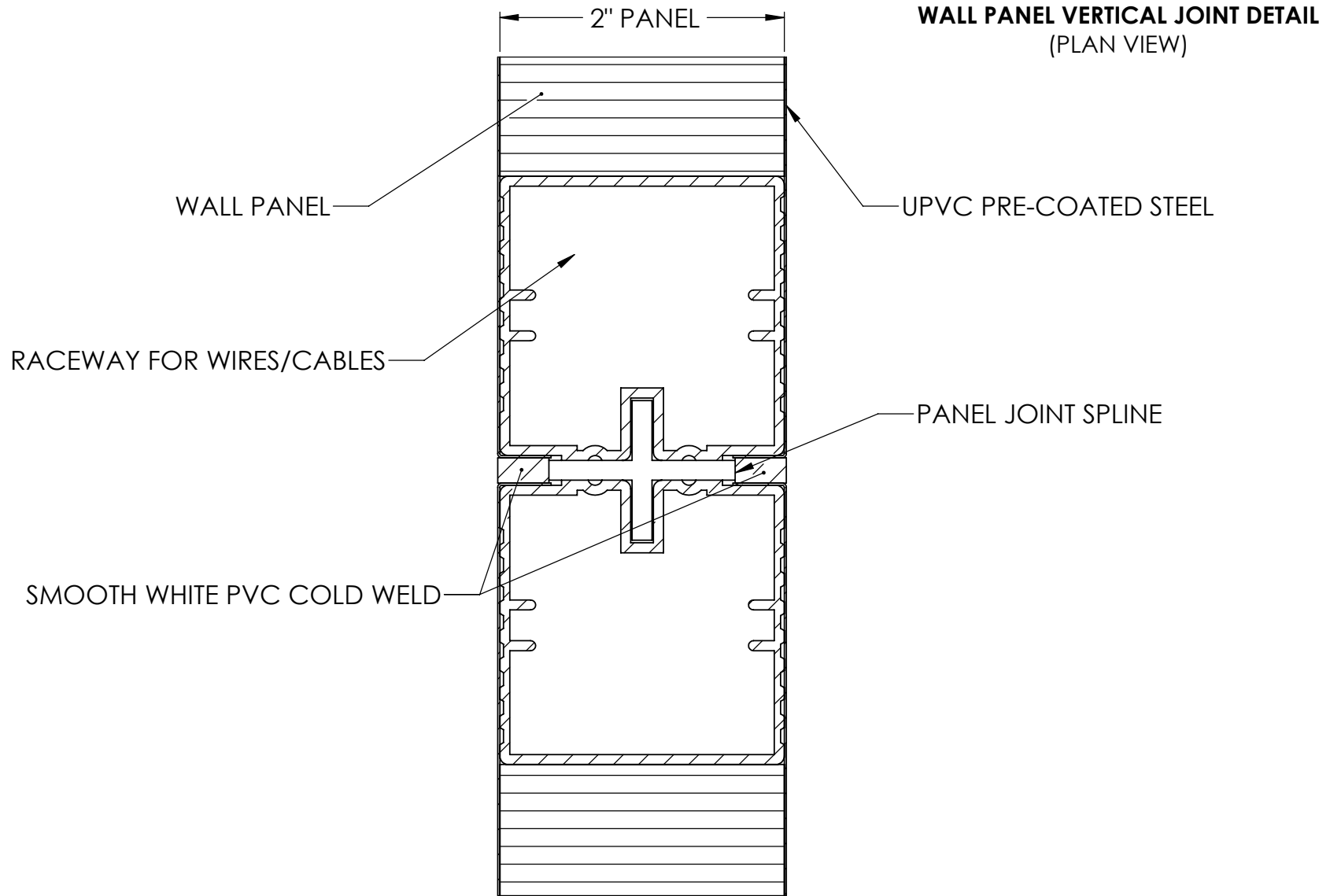



REVISIONS				MATERIAL SPEC.	FINISH SPEC.	UNLESS OTHERWISE SPECIFIED, DIMENSIONS ARE IN INCHES		 Terra Universal	TITLE
RV#	DESCRIPTION	DATE	BY			TOLERANCES ON:			<small>PROPRIETARY & CONFIDENTIAL ALL RIGHTS RESERVED BY TERRA UNIVERSAL DISCLOSURE OR COPYING PROHIBITED</small>
NC	INITIAL RELEASE	1/30/25	JLE			.XX DECIMALS ± .03	X° ± 1°	SCALE	
						.XXX DECIMALS ± .010	X/X ± 1/64		
						SIGNATURES			
						ISSUED BY: JOSE LUIS ESPARZA	DATE: 1/30/25		
						REF #: TU15668			SHEET 2 OF 20

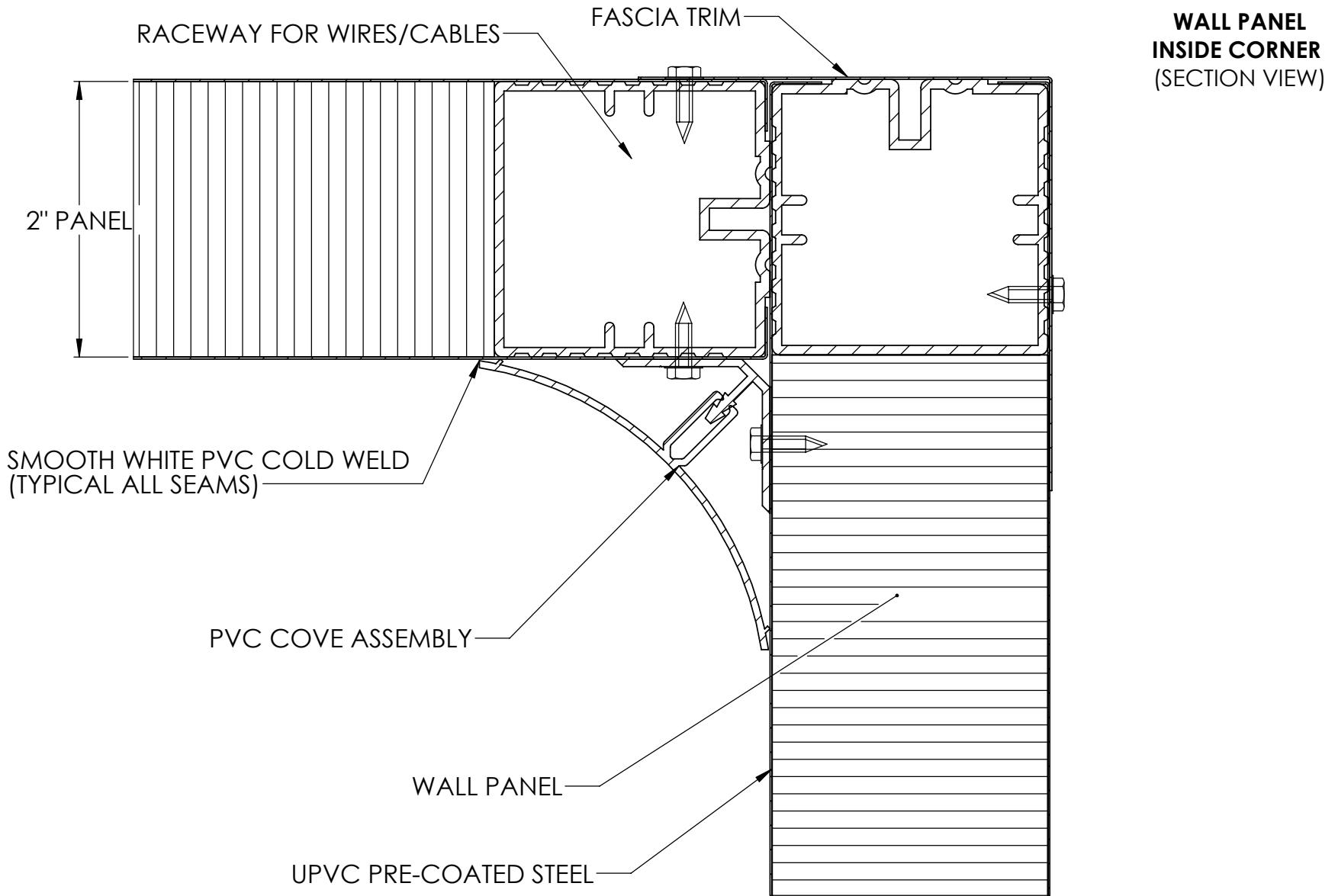
**WALL PANEL WITH WINDOW
(ISO VIEW)**




REVISIONS				MATERIAL SPEC.	FINISH SPEC.	UNLESS OTHERWISE SPECIFIED, DIMENSIONS ARE IN INCHES		 Terra Universal	TITLE
RV#	DESCRIPTION	DATE	BY			TOLERANCES ON:			<small>PROPRIETARY & CONFIDENTIAL ALL RIGHTS RESERVED BY TERRA UNIVERSAL DISCLOSURE OR COPYING PROHIBITED</small>
NC	INITIAL RELEASE	1/30/25	JLE			.XX DECIMALS ± .03	X° ± 1°		
						.XXX DECIMALS ± .010	X/X ± 1/64		
						SIGNATURES		DATE	
						ISSUED BY: JOSE LUIS ESPARZA		1/30/25	
						REF #:	TU15668		
									SCALE
									SHEET 3 OF 20



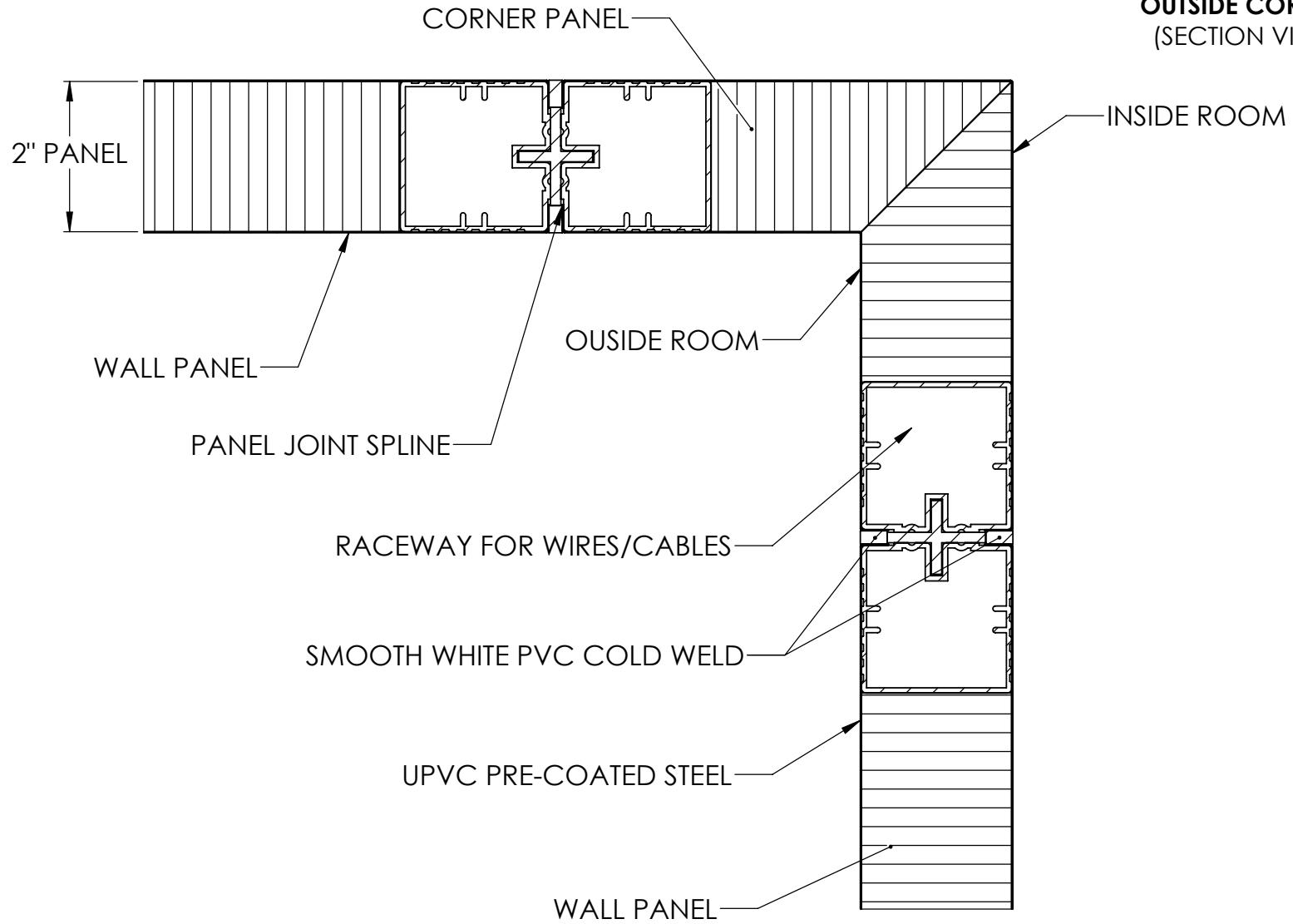
REVISIONS				MATERIAL SPEC.	FINISH SPEC.	UNLESS OTHERWISE SPECIFIED, DIMENSIONS ARE IN INCHES		 Terra Universal	TITLE
RV#	DESCRIPTION	DATE	BY			TOLERANCES ON:			<small>PROPRIETARY & CONFIDENTIAL ALL RIGHTS RESERVED BY TERRA UNIVERSAL DISCLOSURE OR COPYING PROHIBITED</small>
NC	INITIAL RELEASE	1/30/25	JLE			.XX DECIMALS ± .03	X° ± 1°		
						.XXX DECIMALS ± .010	X/X ± 1/64		
						SIGNATURES		DATE	
						ISSUED BY: JOSE LUIS ESPARZA		1/30/25	
						REF #:	TU15668		
									SCALE
									SHEET 4 OF 20




**WALL PANEL
INSIDE CORNER
(SECTION VIEW)**

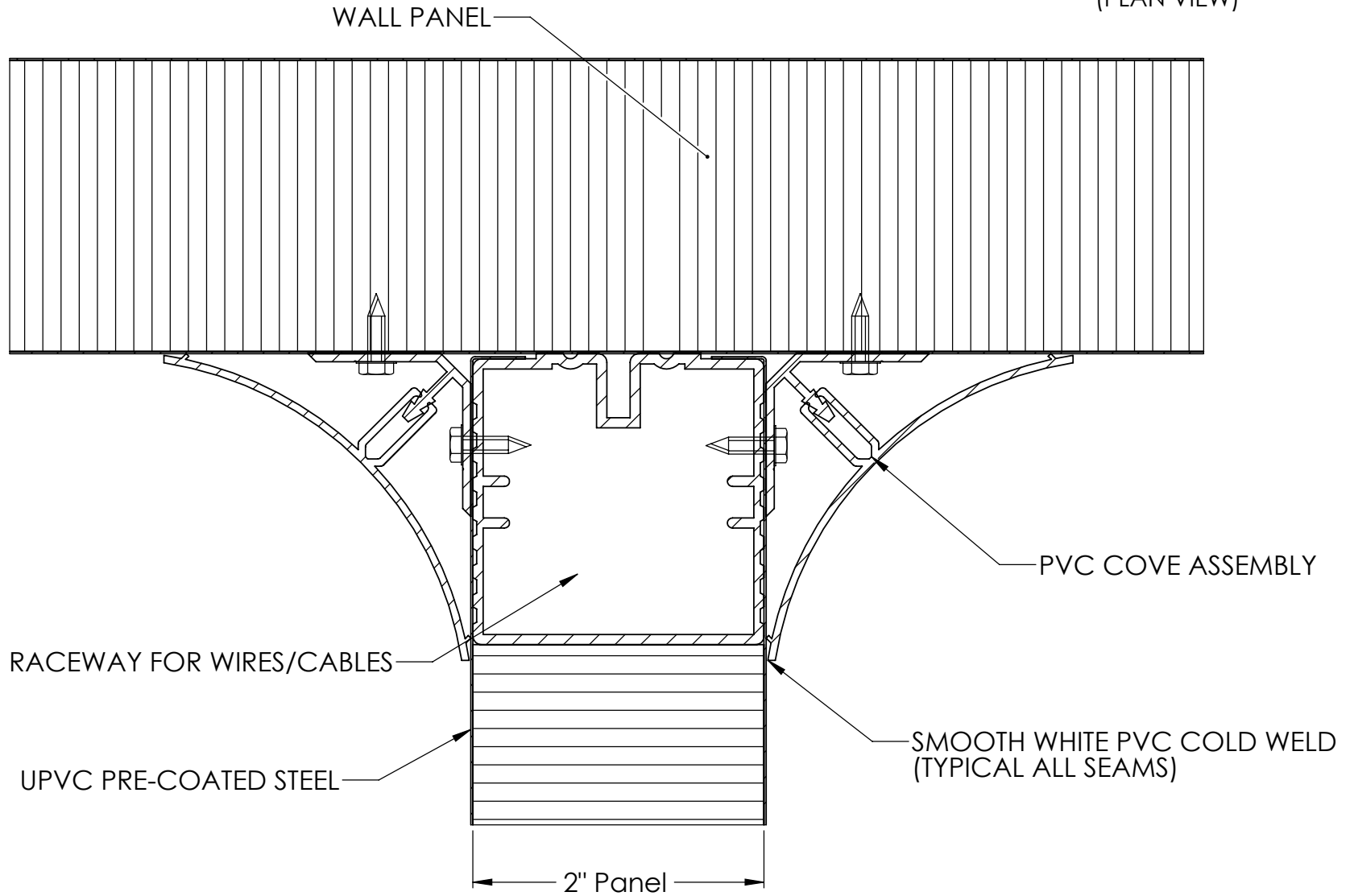
REVISIONS				MATERIAL SPEC.	FINISH SPEC.	UNLESS OTHERWISE SPECIFIED, DIMENSIONS ARE IN INCHES				 Terra Universal	TITLE
RV#	DESCRIPTION	DATE	BY			TOLERANCES ON:					<small>PROPRIETARY & CONFIDENTIAL ALL RIGHTS RESERVED BY TERRA UNIVERSAL DISCLOSURE OR COPYING PROHIBITED</small>
NC	INITIAL RELEASE	1/30/25	JLE			.XX	DECIMALS ± .03	X° ± 1°			
						.XXX	DECIMALS ± .010	X/X ± 1/64			
						SIGNATURES		DATE			
						ISSUED BY: JOSE LUIS ESPARZA		1/30/25			
						REF #:	TU15668				
										SCALE	SHEET 5 OF 20


**WALL PANEL
OUTSIDE CORNER
(SECTION VIEW)**



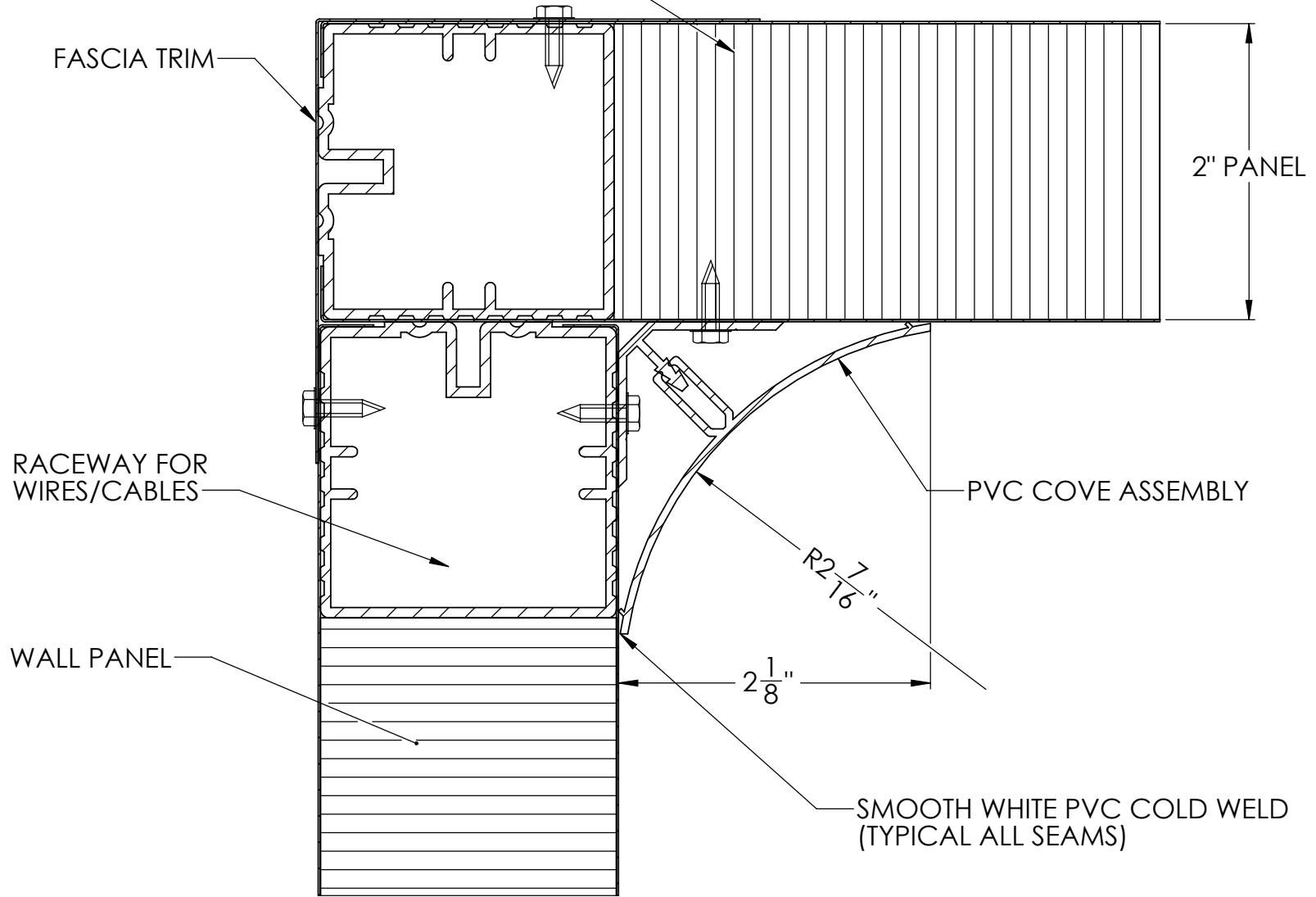
REVISIONS				MATERIAL SPEC.	FINISH SPEC.	UNLESS OTHERWISE SPECIFIED, DIMENSIONS ARE IN INCHES	 Terra Universal	TITLE
RV#	DESCRIPTION	DATE	BY					
NC	INITIAL RELEASE	1/30/25	JLE			TOLERANCES ON: .XX DECIMALS ± .03 X°± 1° .XXX DECIMALS ± .010 X/X ± 1/64	BIOSAFE(R) WALL PANEL SYSTEM	
						SIGNATURES ISSUED BY: JOSE LUIS ESPARZA REF #: TU15668		DATE 1/30/25
							<small> PROPRIETARY & CONFIDENTIAL ALL RIGHTS RESERVED BY TERRA UNIVERSAL DISCLOSURE OR COPYING PROHIBITED </small>	SCALE
								SHEET 6 OF 20

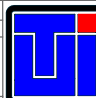
**WALL PANEL JUNCTION
(PLAN VIEW)**



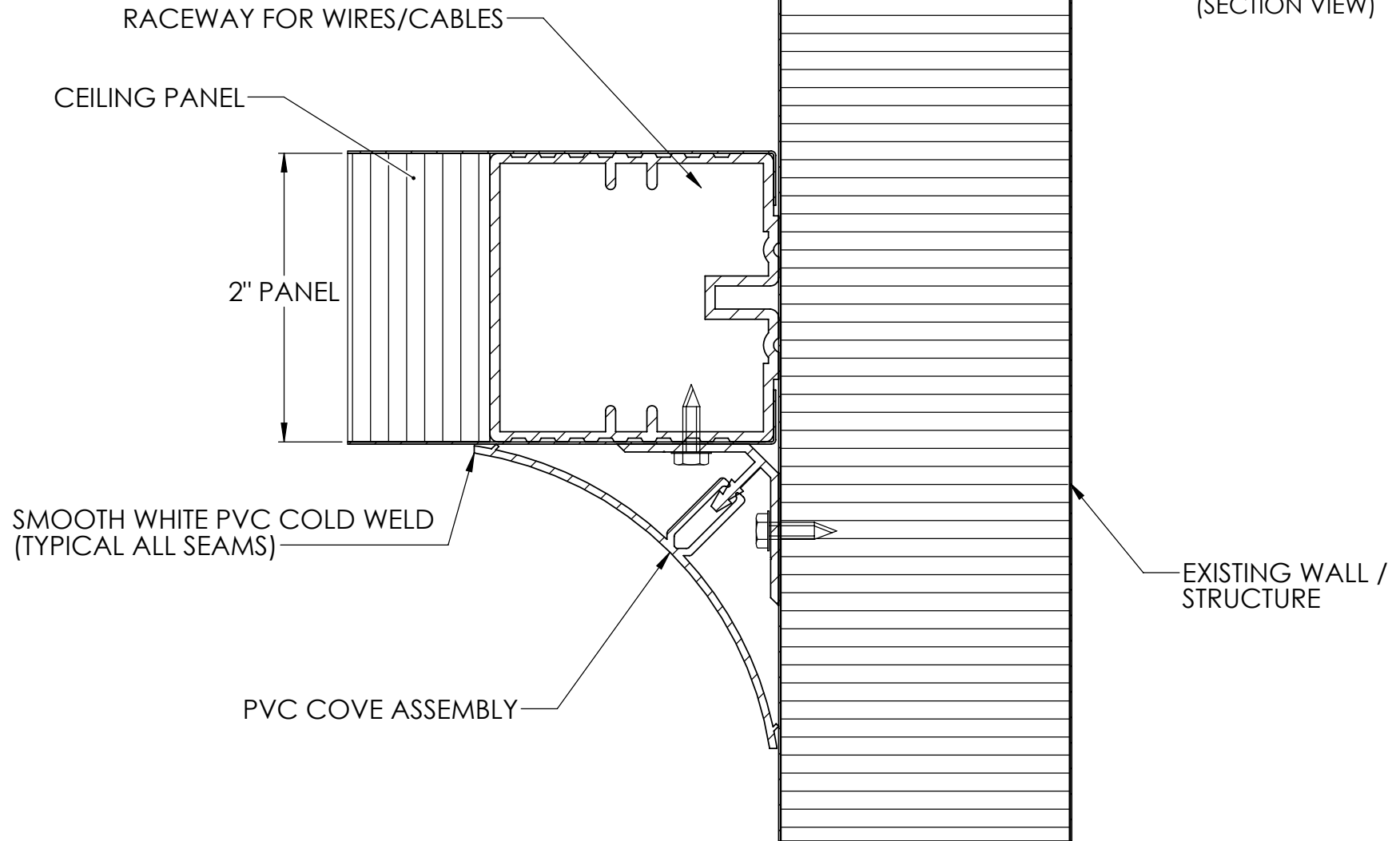
REVISIONS				MATERIAL SPEC.	FINISH SPEC.	UNLESS OTHERWISE SPECIFIED, DIMENSIONS ARE IN INCHES				 Terra Universal <small>PROPRIETARY & CONFIDENTIAL ALL RIGHTS RESERVED BY TERRA UNIVERSAL DISCLOSURE OR COPYING PROHIBITED</small>	TITLE
RV#	DESCRIPTION	DATE	BY			TOLERANCES ON:					BIOSAFE(R) WALL PANEL SYSTEM SCALE: _____ SHEET 7 OF 20
NC	INITIAL RELEASE	1/30/25	JLE			.XX	DECIMALS ± .03	X° ± 1°			
						.XXX	DECIMALS ± .010	X/X ± 1/64			
						SIGNATURES		DATE			
						ISSUED BY: JOSE LUIS ESPARZA		1/30/25			
						REF #:	TU15668				


**CEILING PANEL CORNER CAPPING
(SECTION VIEW)**



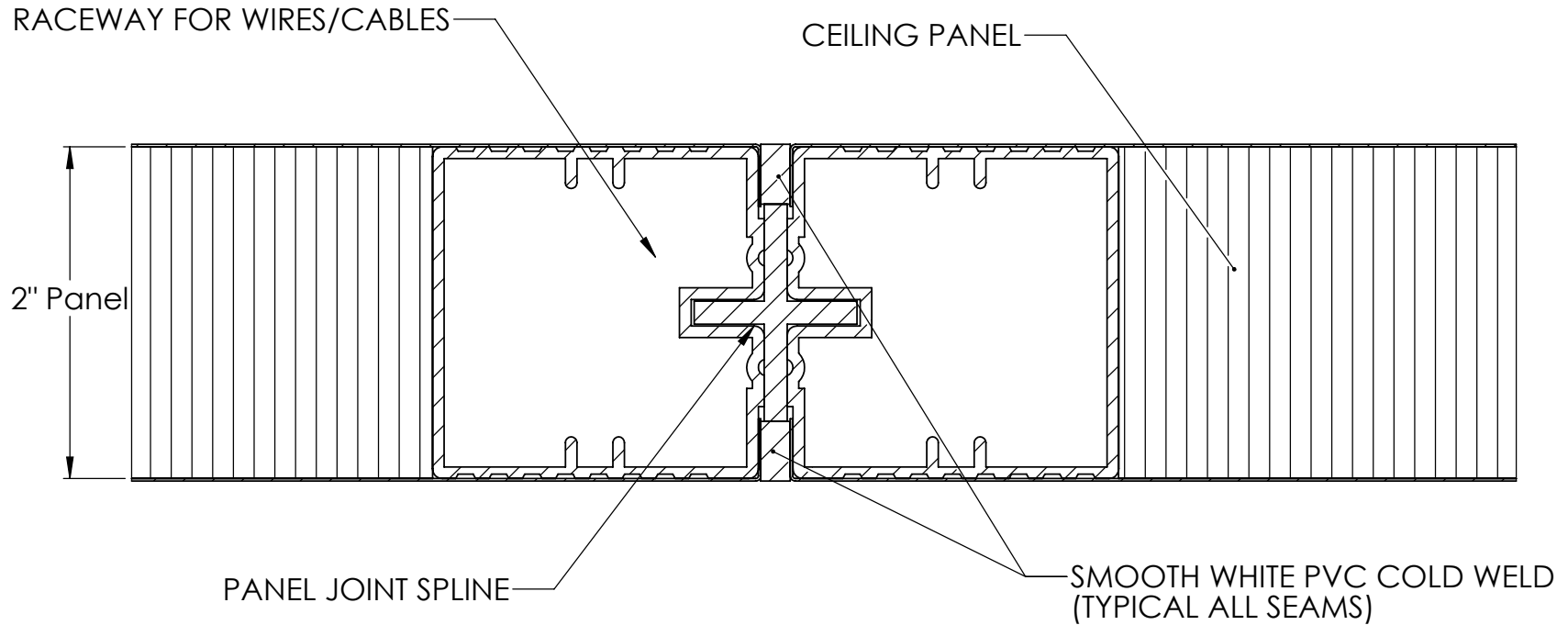
REVISIONS				MATERIAL SPEC.	FINISH SPEC.	UNLESS OTHERWISE SPECIFIED, DIMENSIONS ARE IN INCHES	 Terra Universal <small>PROPRIETARY & CONFIDENTIAL ALL RIGHTS RESERVED BY TERRA UNIVERSAL DISCLOSURE OR COPYING PROHIBITED</small>	TITLE
RV#	DESCRIPTION	DATE	BY					
NC	INITIAL RELEASE	1/30/25	JLE					


**CEILING PANEL
JUNCTION AT EXISTING WALL
(SECTION VIEW)**



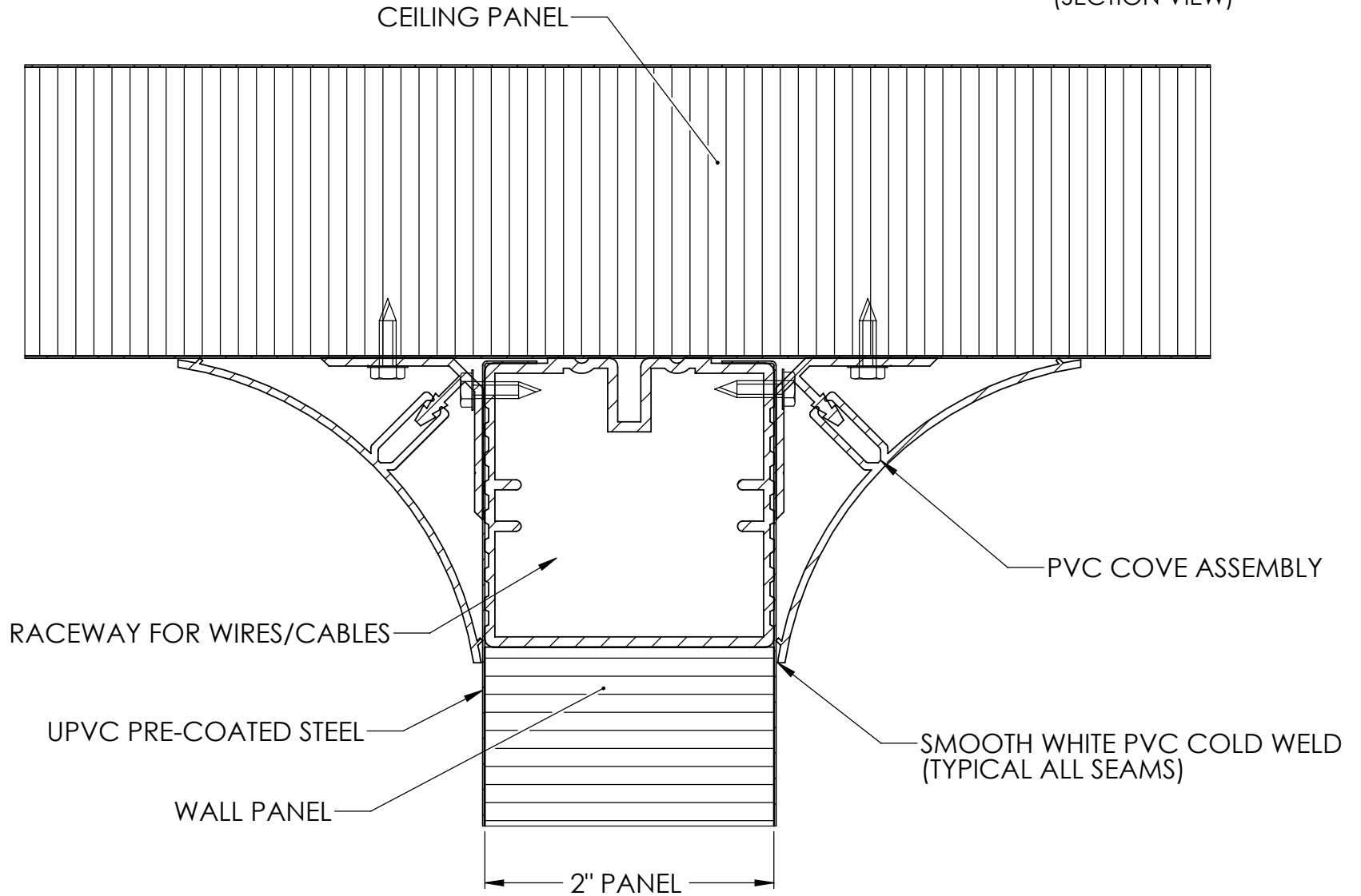
REVISIONS				MATERIAL SPEC.	FINISH SPEC.	UNLESS OTHERWISE SPECIFIED, DIMENSIONS ARE IN INCHES				 Terra Universal <small>PROPRIETARY & CONFIDENTIAL ALL RIGHTS RESERVED BY TERRA UNIVERSAL DISCLOSURE OR COPYING PROHIBITED</small>	TITLE
RV#	DESCRIPTION	DATE	BY			TOLERANCES ON:					BIOSAFE(R) WALL PANEL SYSTEM
NC	INITIAL RELEASE	1/30/25	JLE			.XX	DECIMALS ± .03	X° ± 1°			
						.XXX	DECIMALS ± .010	X/X ± 1/64			
						SIGNATURES		DATE			
						ISSUED BY: JOSE LUIS ESPARZA		1/30/25			
						REF #:	TU15668			SCALE	SHEET 9 OF 20


**CEILING PANEL
LONGITUDINAL JOINT DETAIL
(SECTION VIEW)**



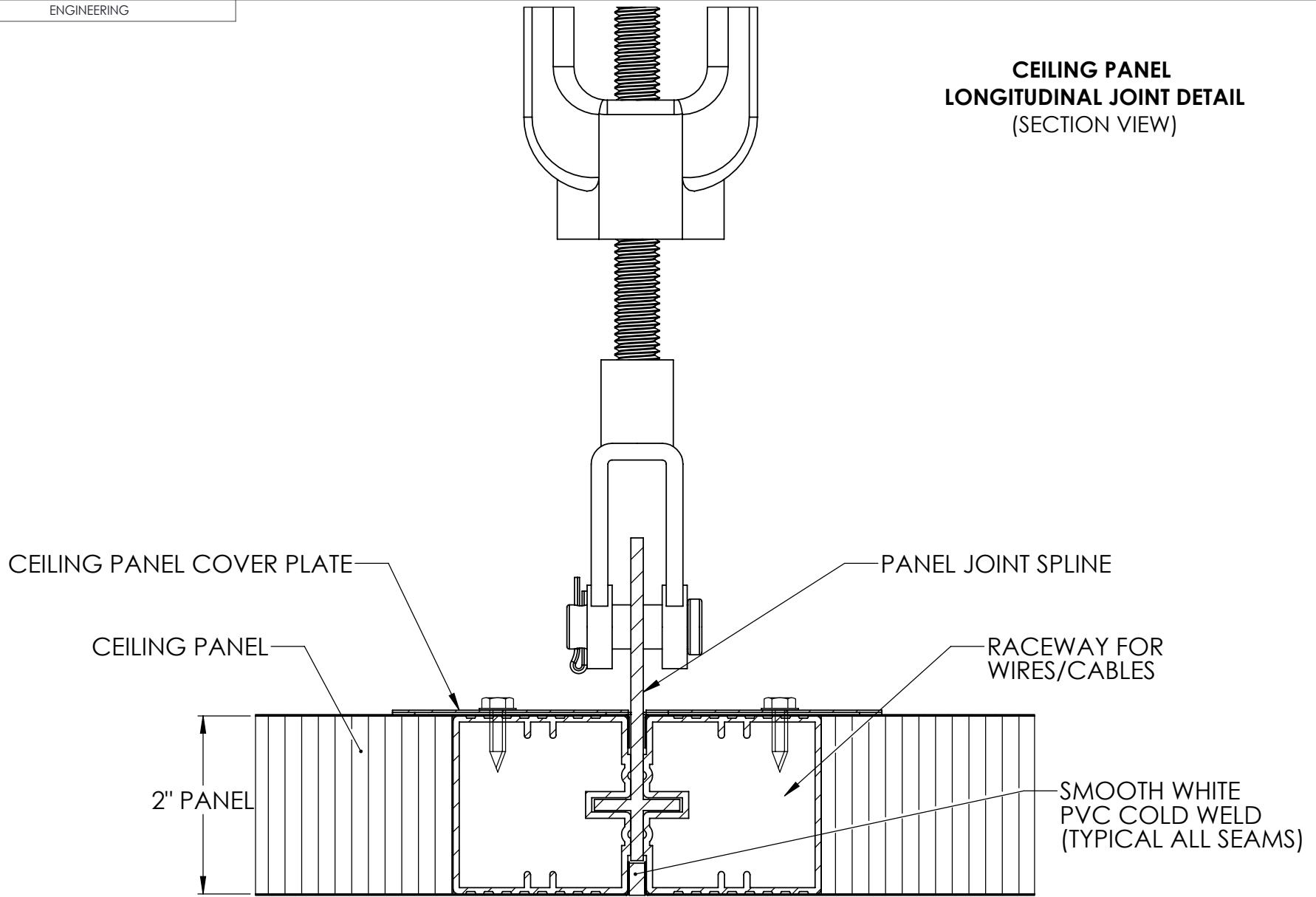
REVISIONS				MATERIAL SPEC.	FINISH SPEC.	UNLESS OTHERWISE SPECIFIED, DIMENSIONS ARE IN INCHES	 Terra Universal <small>PROPRIETARY & CONFIDENTIAL ALL RIGHTS RESERVED BY TERRA UNIVERSAL DISCLOSURE OR COPYING PROHIBITED</small>	TITLE
RV#	DESCRIPTION	DATE	BY					TOLERANCES ON:
NC	INITIAL RELEASE	1/30/25	JLE	.XX DECIMALS ± .03 X°± 1° .XXX DECIMALS ± .010 X/X ± 1/64 SIGNATURES DATE ISSUED BY: JOSE LUIS ESPARZA 1/30/25 REF #: TU15668				
								SCALE
								SHEET 10 OF 20


**CEILING PANEL
LONGITUDINAL JUNCTION
(SECTION VIEW)**



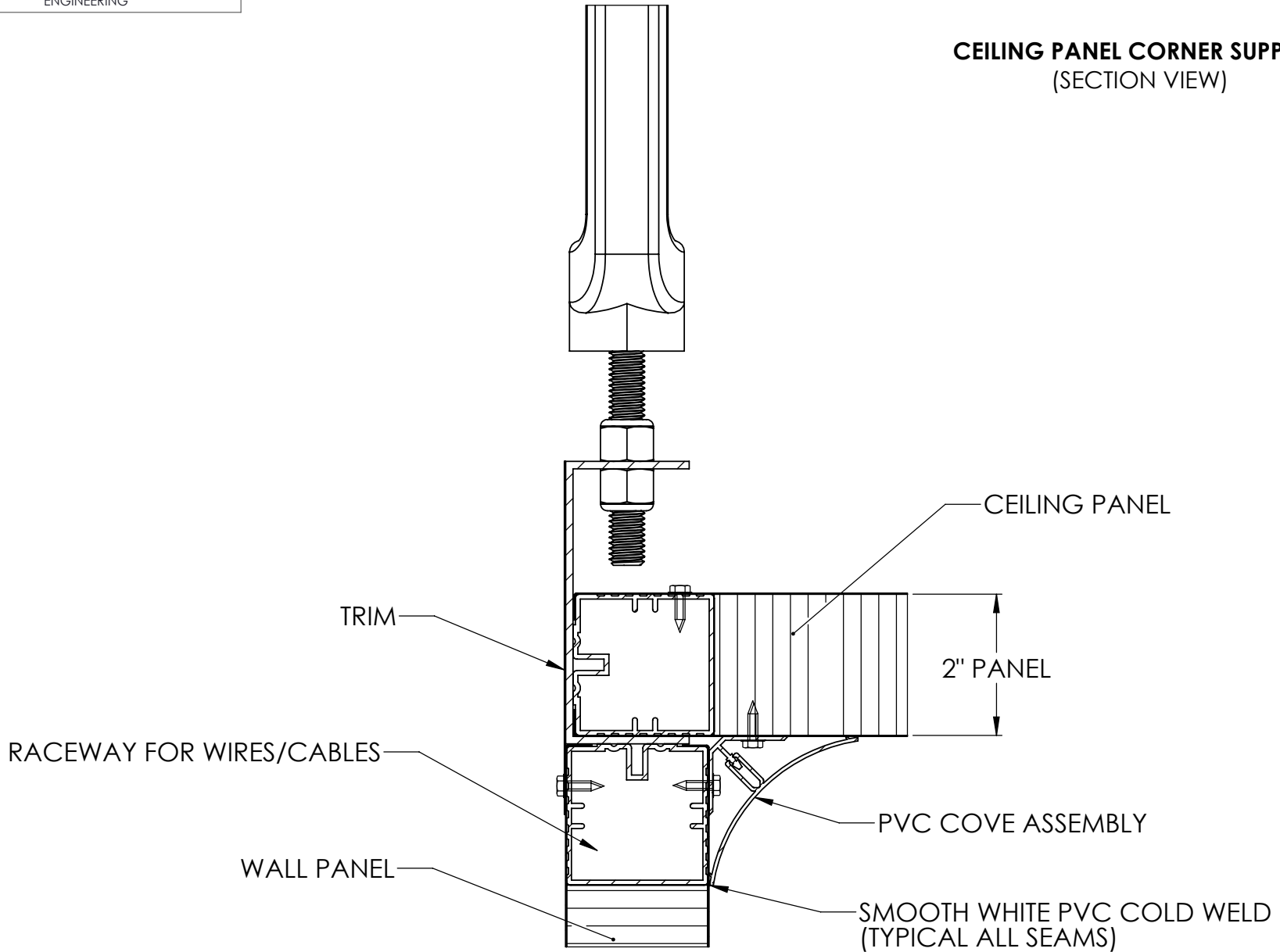
REVISIONS				MATERIAL SPEC.	FINISH SPEC.	UNLESS OTHERWISE SPECIFIED, DIMENSIONS ARE IN INCHES				 Terra Universal <small>PROPRIETARY & CONFIDENTIAL ALL RIGHTS RESERVED BY TERRA UNIVERSAL DISCLOSURE OR COPYING PROHIBITED</small>	TITLE
RV#	DESCRIPTION	DATE	BY			TOLERANCES ON:					BIOSAFE(R) WALL PANEL SYSTEM SCALE: _____ SHEET 11 OF 20
NC	INITIAL RELEASE	1/30/25	JLE			.XX	DECIMALS ± .03	X° ± 1°			
						.XXX	DECIMALS ± .010	X/X ± 1/64			
						SIGNATURES		DATE			
						ISSUED BY: JOSE LUIS ESPARZA		1/30/25			
						REF #:	TU15668				


**CEILING PANEL
LONGITUDINAL JOINT DETAIL
(SECTION VIEW)**



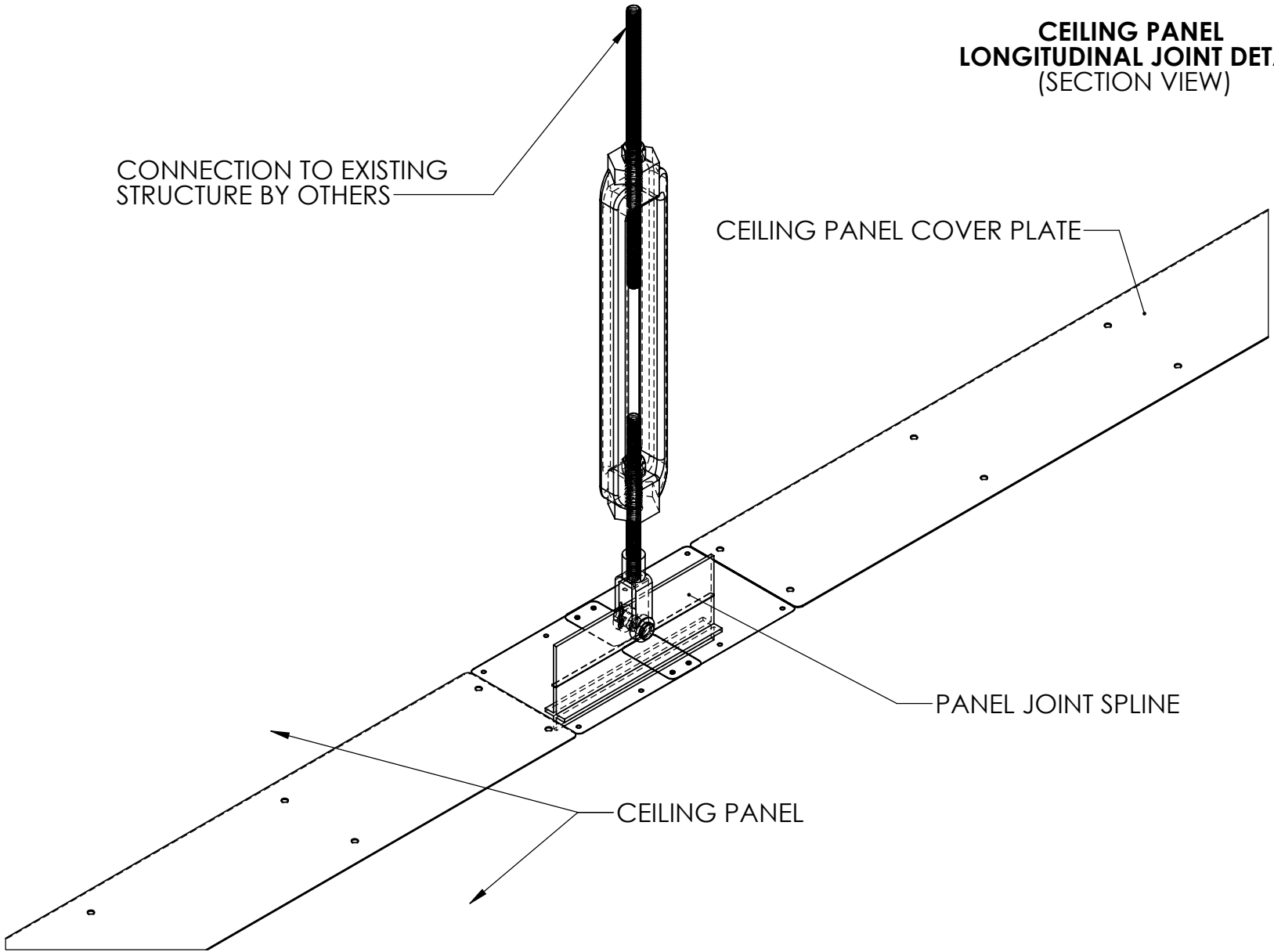
REVISIONS				MATERIAL SPEC.	FINISH SPEC.	UNLESS OTHERWISE SPECIFIED, DIMENSIONS ARE IN INCHES		 Terra Universal <small>PROPRIETARY & CONFIDENTIAL ALL RIGHTS RESERVED BY TERRA UNIVERSAL DISCLOSURE OR COPYING PROHIBITED</small>	TITLE
RV#	DESCRIPTION	DATE	BY			TOLERANCES ON:			BIOSAFE(R) WALL PANEL SYSTEM SCALE: _____ SHEET 12 OF 20
NC	INITIAL RELEASE	1/30/25	JLE			.XX DECIMALS ± .03	X° ± 1°		
						.XXX DECIMALS ± .010	X/X ± 1/64		
						SIGNATURES			
						ISSUED BY: JOSE LUIS ESPARZA	DATE: 1/30/25		
						REF #: TU15668			


**CEILING PANEL CORNER SUPPORT
(SECTION VIEW)**



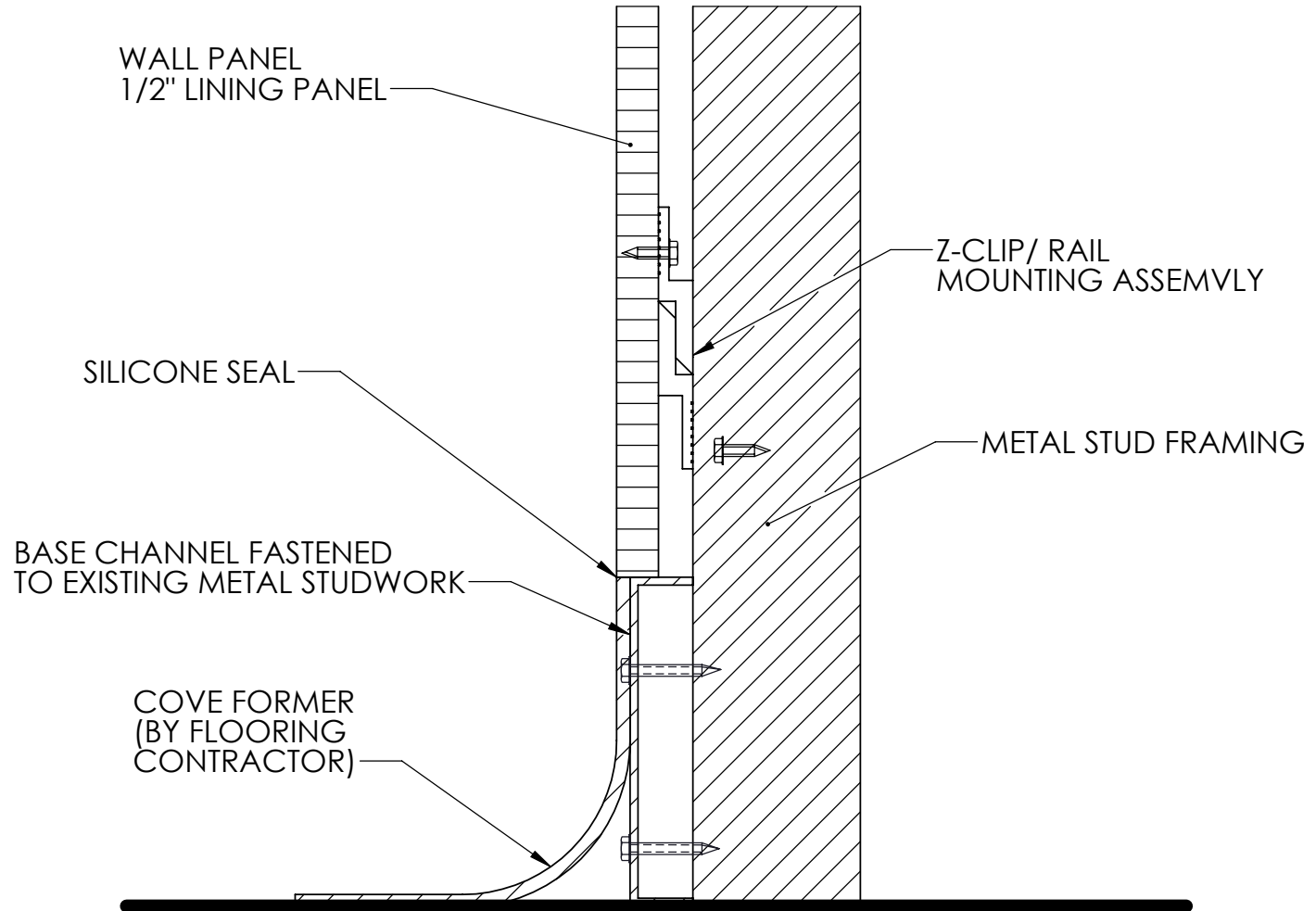
REVISIONS				MATERIAL SPEC.	FINISH SPEC.	UNLESS OTHERWISE SPECIFIED, DIMENSIONS ARE IN INCHES		 Terra Universal	TITLE
RV#	DESCRIPTION	DATE	BY			TOLERANCES ON:			<small>PROPRIETARY & CONFIDENTIAL ALL RIGHTS RESERVED BY TERRA UNIVERSAL DISCLOSURE OR COPYING PROHIBITED</small>
NC	INITIAL RELEASE	1/30/25	JLE			.XX DECIMALS ± .03	X° ± 1°	SCALE	
						.XXX DECIMALS ± .010	X/X ± 1/64		
						SIGNATURES			
						ISSUED BY: JOSE LUIS ESPARZA	DATE		
						REF #: TU15668	1/30/25		
									SHEET 14 OF 20


CEILING PANEL LONGITUDINAL JOINT DETAIL (SECTION VIEW)



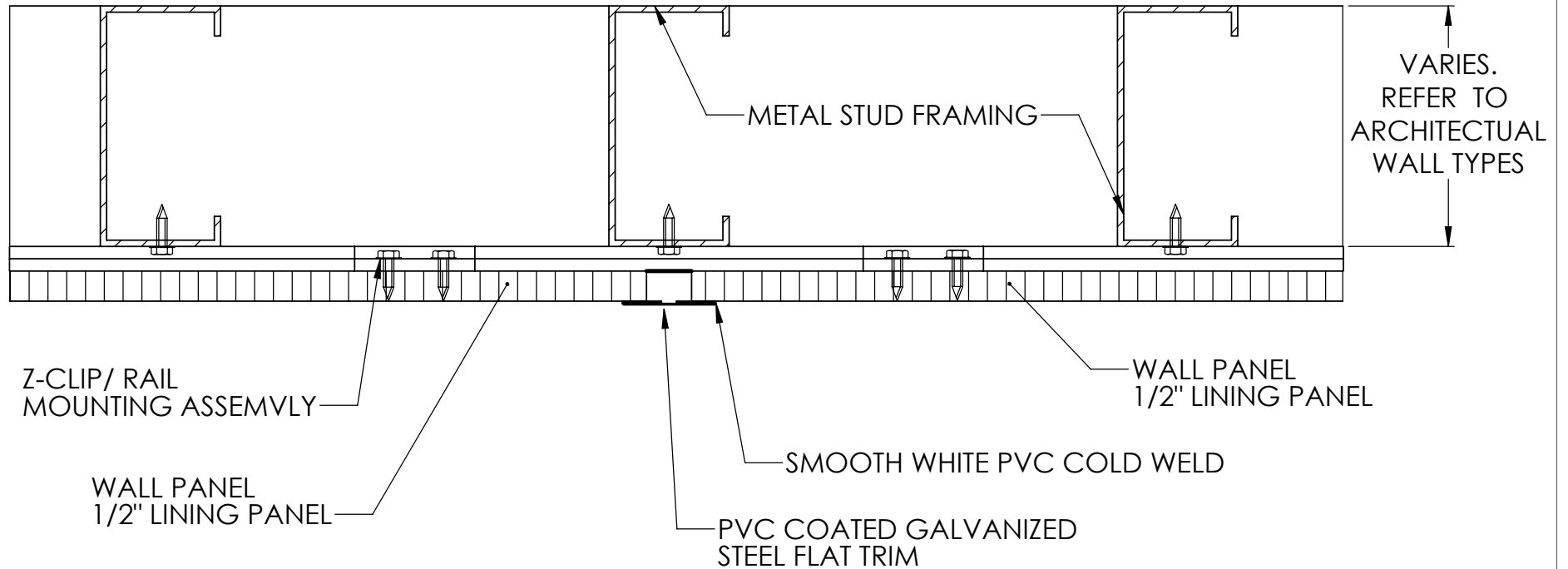
REVISIONS				MATERIAL SPEC.	FINISH SPEC.	UNLESS OTHERWISE SPECIFIED, DIMENSIONS ARE IN INCHES	 Terra Universal <small>PROPRIETARY & CONFIDENTIAL ALL RIGHTS RESERVED BY TERRA UNIVERSAL DISCLOSURE OR COPYING PROHIBITED</small>	TITLE
RV#	DESCRIPTION	DATE	BY					TOLERANCES ON:
NC	INITIAL RELEASE	1/30/25	JLE	.XX DECIMALS ± .03 X°± 1°				
				.XXX DECIMALS ± .010 X/X ± 1/64				
				SIGNATURES				
				ISSUED BY: JOSE LUIS ESPARZA			DATE	
				REF #: TU15668			1/30/25	
							SCALE	SHEET 15 OF 20


EXISTING WALL BASE DETAIL
(SECTION VIEW)



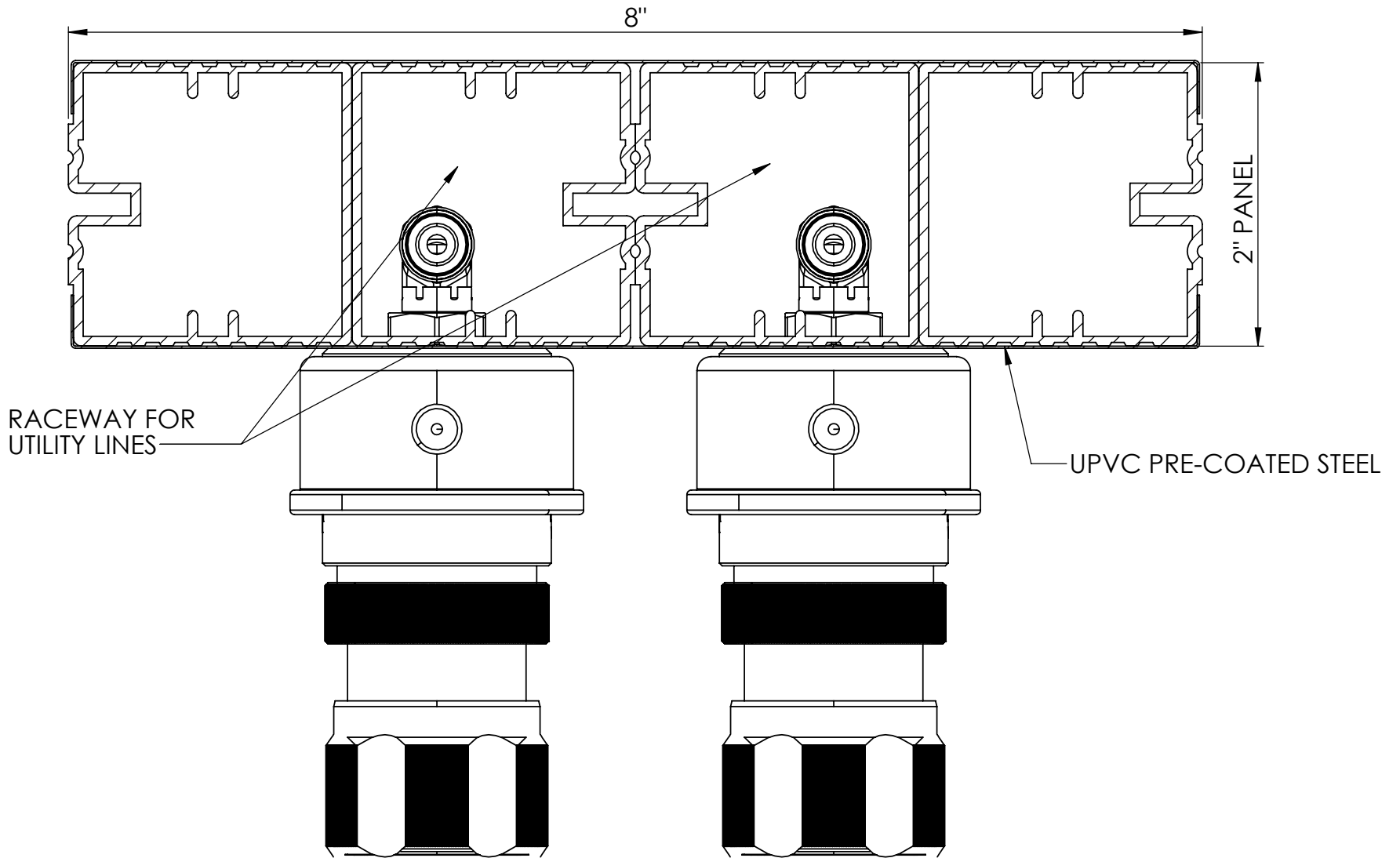
REVISIONS				MATERIAL SPEC.	FINISH SPEC.	UNLESS OTHERWISE SPECIFIED, DIMENSIONS ARE IN INCHES	 Terra Universal <small>PROPRIETARY & CONFIDENTIAL ALL RIGHTS RESERVED BY TERRA UNIVERSAL DISCLOSURE OR COPYING PROHIBITED</small>	TITLE	
RV#	DESCRIPTION	DATE	BY					BIOSAFE(R) WALL PANEL SYSTEM	
NC	INITIAL RELEASE	1/30/25	JLE			<small>TOLERANCES ON:</small> .XX DECIMALS ± .03 X°± 1° .XXX DECIMALS ± .010 X/X ± 1/64 SIGNATURES _____ DATE _____ ISSUED BY: JOSE LUIS ESPARZA 1/30/25 REF #: TU15668	SCALE _____	SHEET 16 OF 20	


**EXISTING WALL
(PLAN VIEW)**



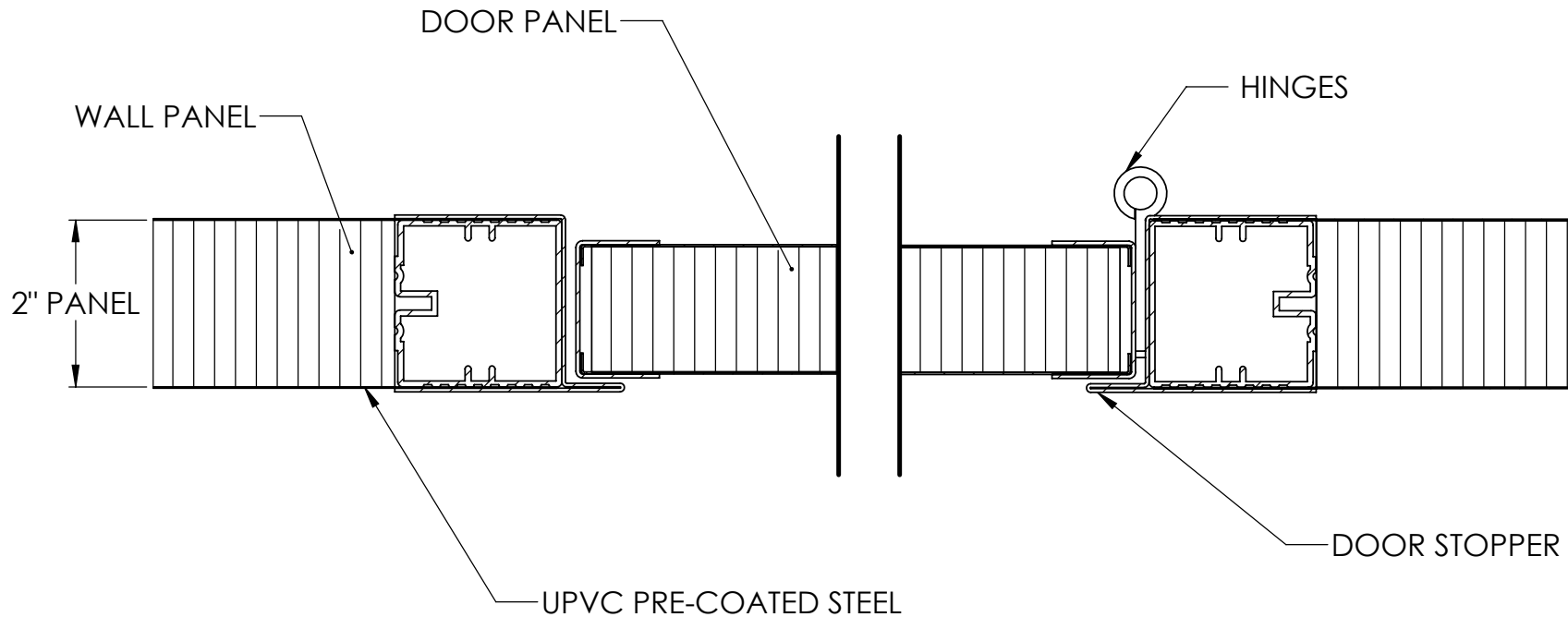
REVISIONS				MATERIAL SPEC.	FINISH SPEC.	UNLESS OTHERWISE SPECIFIED, DIMENSIONS ARE IN INCHES				 Terra Universal	TITLE	
RV#	DESCRIPTION	DATE	BY			TOLERANCES ON:					<small>PROPRIETARY & CONFIDENTIAL ALL RIGHTS RESERVED BY TERRA UNIVERSAL DISCLOSURE OR COPYING PROHIBITED</small>	BIOSAFE(R) WALL PANEL SYSTEM
NC	INITIAL RELEASE	1/30/25	JLE			.XX	DECIMALS ± .03	X° ±	1°			
						.XXX	DECIMALS ± .010	X/X ±	1/64			
						SIGNATURES		DATE				
						ISSUED BY: JOSE LUIS ESPARZA		1/30/25				
						REF #:	TU15668					
											SCALE	SHEET 17 OF 20


**UTILITY WALL
(PLAN VIEW)**



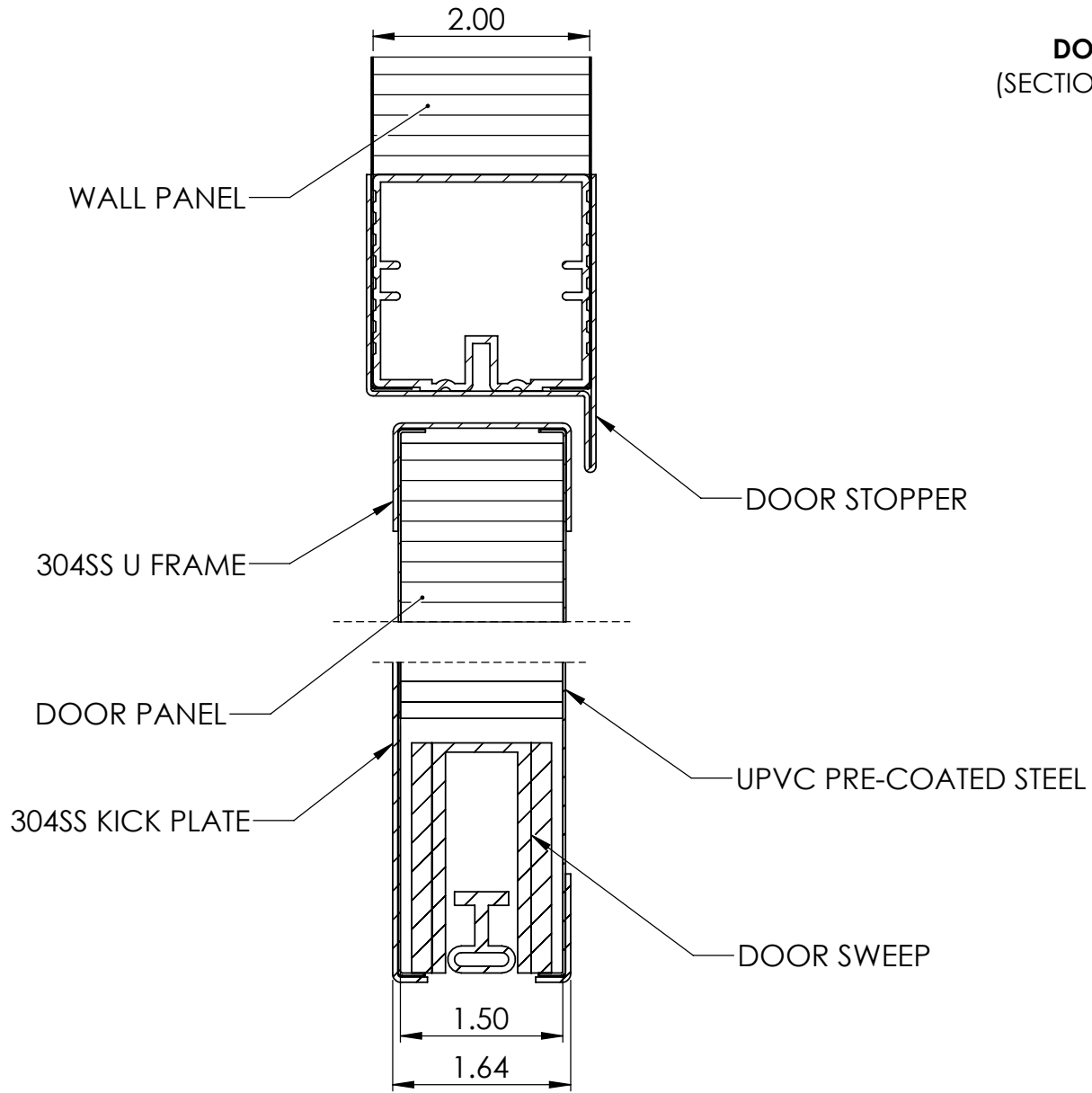
REVISIONS				MATERIAL SPEC.	FINISH SPEC.	UNLESS OTHERWISE SPECIFIED, DIMENSIONS ARE IN INCHES	 Terra Universal <small>PROPRIETARY & CONFIDENTIAL ALL RIGHTS RESERVED BY TERRA UNIVERSAL DISCLOSURE OR COPYING PROHIBITED</small>	TITLE
RV#	DESCRIPTION	DATE	BY					
NC	INITIAL RELEASE	1/30/25	JLE			TOLERANCES ON: .XX DECIMALS ± .03 X° ± 1° .XXX DECIMALS ± .010 X/X ± 1/64 SIGNATURES ISSUED BY: JOSE LUIS ESPARZA DATE: 1/30/25 REF #: TU15668		BIOSAFE(R) WALL PANEL SYSTEM
								SCALE
								SHEET 18 OF 20


**DOOR - WALL PANEL
(PLAN VIEW)**



REVISIONS				MATERIAL SPEC.	FINISH SPEC.	UNLESS OTHERWISE SPECIFIED, DIMENSIONS ARE IN INCHES				 Terra Universal <small>PROPRIETARY & CONFIDENTIAL ALL RIGHTS RESERVED BY TERRA UNIVERSAL DISCLOSURE OR COPYING PROHIBITED</small>	TITLE
RV#	DESCRIPTION	DATE	BY			TOLERANCES ON:					
NC	INITIAL RELEASE	1/30/25	JLE			.XX	DECIMALS ± .03	X° ±	1°	BIOSAFE(R) WALL PANEL SYSTEM SHEET 19 OF 20	
						.XXX	DECIMALS ± .010	X/X ±	1/64		
						SIGNATURES		DATE			
						ISSUED BY: JOSE LUIS ESPARZA		1/30/25			
						REF #:	TU15668				

DOOR
(SECTION VIEW)



REVISIONS				MATERIAL SPEC.	FINISH SPEC.	UNLESS OTHERWISE SPECIFIED, DIMENSIONS ARE IN INCHES				 Terra Universal <small>PROPRIETARY & CONFIDENTIAL ALL RIGHTS RESERVED BY TERRA UNIVERSAL DISCLOSURE OR COPYING PROHIBITED</small>	TITLE	
RV#	DESCRIPTION	DATE	BY			TOLERANCES ON:					BIOSAFE(R) WALL PANEL SYSTEM	
NC	INITIAL RELEASE	1/30/25	JLE			.XX	DECIMALS ± .03	X° ± 1°				
						.XXX	DECIMALS ± .010	X/X ± 1/64				
						SIGNATURES						
						ISSUED BY: JOSE LUIS ESPARZA				DATE		
										1/30/25		
						REF #:	TU15668				SCALE	SHEET 20 OF 20