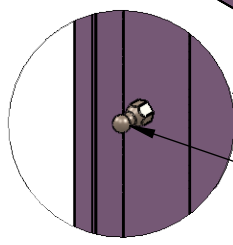
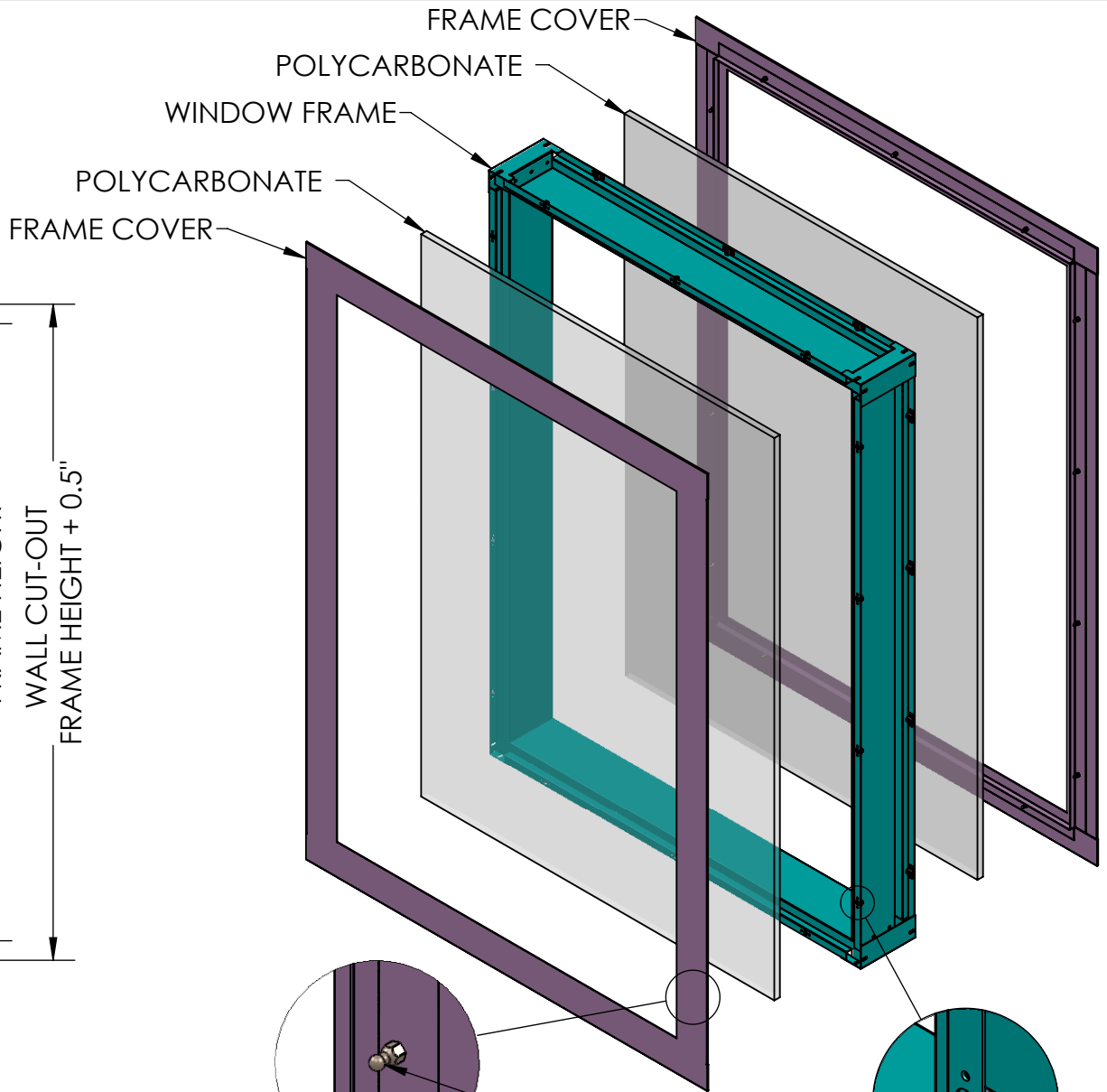
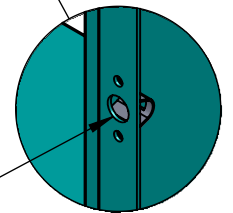


FRONT VIEW



REVERSE SIDE



**BALL STUDS
SNAP INTO FRAME**

PROPRIETARY:
THE INFORMATION CONTAINED IN THIS DRAWING IS THE SOLE PROPERTY OF
TERRA UNIVERSAL. COPYING, REPRODUCTION, FABRICATION ARE PROHIBITED.
© 2021 TERRA UNIVERSAL, INC. ALL RIGHTS RESERVED.

REVISIONS			
RV#	DESCRIPTION	DATE	BY
NC	INITIAL RELEASE	3/2/2021	DN
○			

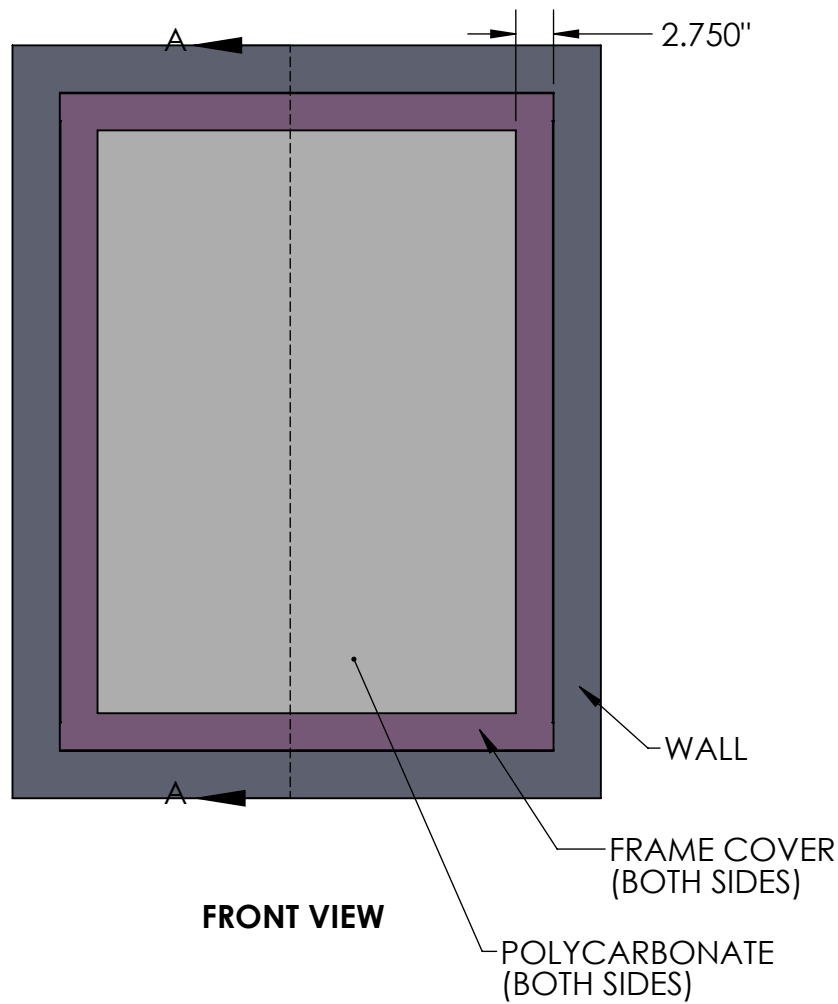
MATERIAL SPEC.	FINISH SPEC.
304 SS	#4 FINISH
1/2" POLYCARBONATE	

UNLESS OTHERWISE SPECIFIED, DIMENSIONS ARE IN INCHES			
TOLERANCES ON:			
.XX DECIMALS ±.03	X' ± 1"		
.XXX DECIMALS ±.010	X/X' ± 1/64		
SIGNATURES		DATE	
ISSUED BY: DONALD NELSON		3/2/2021	
APPROVED BY:			
REF #:			

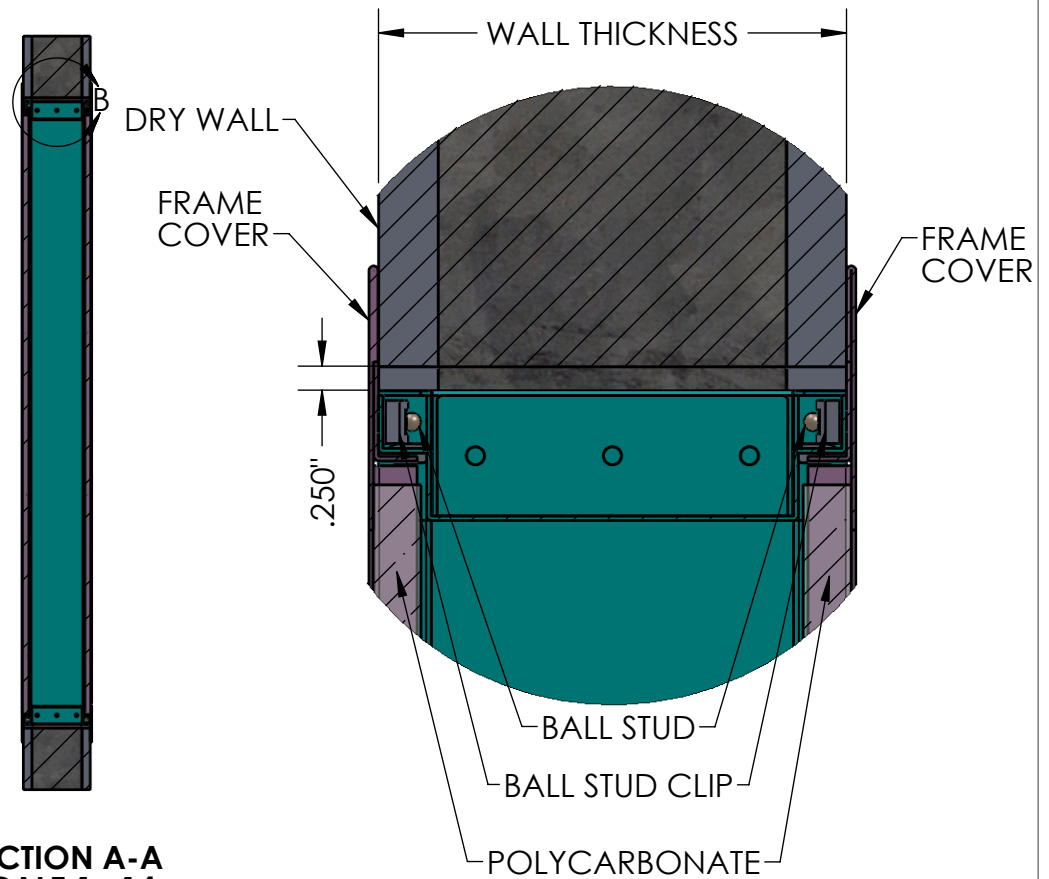


PROPRIETARY & CONFIDENTIAL
ALL RIGHTS RESERVED BY
TERRA UNIVERSAL
DISCLOSURE OR COPYING PROHIBITED

TITLE	
BioSafe Framed Cleanroom Window; Double Pane, Polycarbonate, 304 Stainless Steel Framed	
A	6603-22
SCALE	SHEET 1 OF 2




**SECTION A-A
SCALE 1 : 14**



**DETAIL B
SCALE 1 : 2**

PROPRIETARY:
 THE INFORMATION CONTAINED IN THIS DRAWING IS THE SOLE PROPERTY OF
 TERRA UNIVERSAL. COPYING, REPRODUCTION, FABRICATION ARE PROHIBITED.
 © 2021 TERRA UNIVERSAL, INC. ALL RIGHTS RESERVED.

REVISIONS				MATERIAL SPEC.	FINISH SPEC.	UNLESS OTHERWISE SPECIFIED, DIMENSIONS ARE IN INCHES TOLERANCES ON:		 Terra Universal	TITLE
RV#	DESCRIPTION	DATE	BY	304 SS	#4 FINISH	.XX DECIMALS ±.03	X' ± 1"		<small>PROPRIETARY & CONFIDENTIAL ALL RIGHTS RESERVED BY TERRA UNIVERSAL DISCLOSURE OR COPYING PROHIBITED</small>
NC	INITIAL RELEASE	3/2/2021	DN	1/2" POLYCARBONATE		.XXX DECIMALS ±.010	X/X' ±1/64		
○						SIGNATURES		DATE	
						ISSUED BY: DONALD NELSON		3/2/2021	
						APPROVED BY:			
						REF #:			SCALE A 6603-22