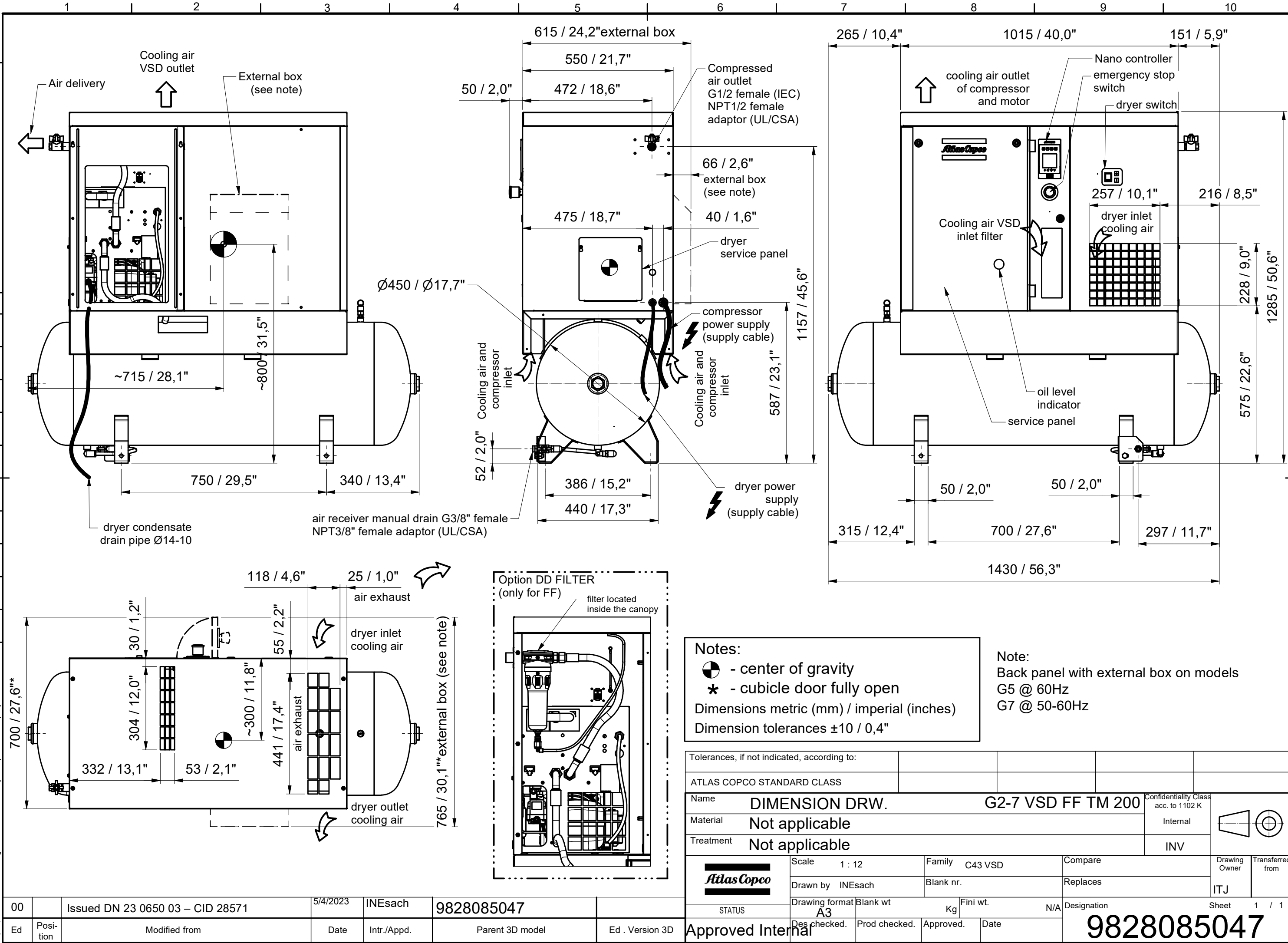


CONFIDENTIAL:

This document is property of Atlas Copco AB and shall not without our permission be altered, copied, used for manufacturing or communicated to any other person or company.

All materials supplied are in compliance with the requirements of the List of Prohibited Substances



Notes:
 ● - center of gravity
 * - cubicle door fully open
 Dimensions metric (mm) / imperial (inches)
 Dimension tolerances ±10 / 0,4"

Note:
 Back panel with external box on models
 G5 @ 60Hz
 G7 @ 50-60Hz

Tolerances, if not indicated, according to:		ATLAS COPCO STANDARD CLASS	
Name	DIMENSION DRW. G2-7 VSD FF TM 200		Confidentiality Class acc. to 1102 K
Material	Not applicable		Internal
Treatment	Not applicable		INV
	Scale	1 : 12	Family C43 VSD
	Drawn by	INESach	Blank nr.
STATUS	Drawing format	Blank wt	Fini wt.
	A3		Kg
Approved Internal	Des checked.	Prod checked.	Approved.
			Date
Designation			Sheet 1 / 1
			9828085047

00	Issued DN 23 0650 03 – CID 28571	5/4/2023	INESach	9828085047
Ed	Position	Date	Intr./Appd.	Parent 3D model
	Modified from			Ed . Version 3D