

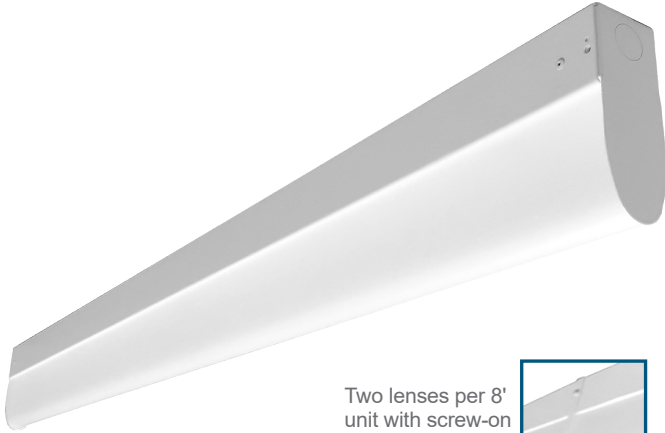
# CLEANROOM TDC100

2" Wide Teardrop Cleanroom Luminaire

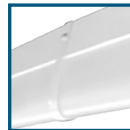


JOB	
TYPE	
DATE	

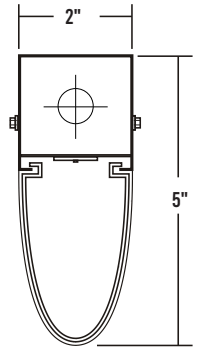
## Surface / Suspension / Grid Mounted



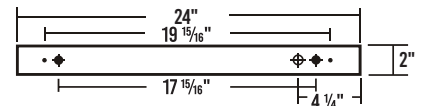
Two lenses per 8' unit with screw-on belly band



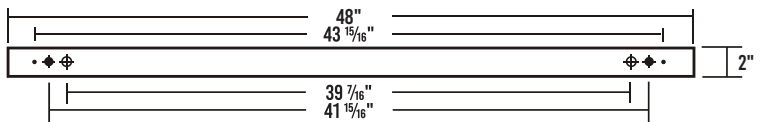
## CROSS SECTION



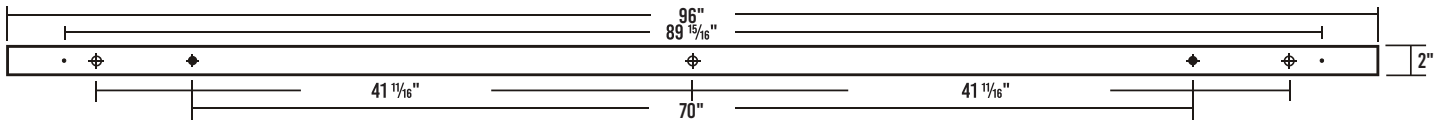
## 2' BACKPLATE



## 4' BACKPLATE



## 8' BACKPLATE



◆ 11/16" STEM MTG. K.O.    ● 1/4" HOLE    ⊕ 7/8" K.O.

## SPECIFICATIONS

### Construction

- Class 100 / ISO Class 5 equivalent
- 22 gauge cold rolled steel housing
- 18 gauge electrogalvanized steel end caps
- Two 0.25" holes on back of fixture housing for mounting

### Finish

- Painted after fabrication
- Baked white powder-coated finish
- Minimum reflectance 90%

### Optical

- Frosted snap-in lens standard

### Electrical

- High efficiency drivers coupled with long-life LEDs
- Service life greater than 50,000 hours (L70)
- Universal voltage 120V through 277V (347V / 480V available)
- Power Factor (PF) ≥ 0.9
- Total Harmonic Distortion (THD) ≤ 20%

### Listing

- UL USA and Canada listed / suitable for damp locations

### Warranty

- 5-Year limited warranty standard. 10-Year limited warranty also available

## APPLICATIONS

- Cleanroom, Retail, Commercial

## FEATURES

- 0-10V dimming driver standard
- Grid-mountable using studed T-bar clip
- Screw-on belly band provides seamless row mounting on surfaces
- Supports California Title 24 compliance

## OPTIONS

- Colored LEDs- amber, red, blue, etc. (Contact customer service for specific nanometer range required)
- Additional lumen packages and color temperatures
- Sensors and controls
- Custom colors
- Emergency battery pack
- Antimicrobial finish
- Belly band for continuous row mounting (standard on 8' models)
- Cable suspension systems



### TERRA UNIVERSAL INC.

Contact Us  
T: (714) 578-6000 info@TerraUniversal.com  
800 S. Raymond Ave, Fullerton, CA 92831  
www.TerraUniversal.com



Due to continued product improvements and enhancements, Terra Universal Inc. reserves the right to alter specifications, dimensions, data, and/or materials without notice. Please visit our website to view the most current information.

© 2026 TERRA UNIVERSAL INC, ALL RIGHTS RESERVED

Revised: 04/06/26



**ORDERING INFORMATION:** Additional Options Available. Visit [www.terrauniversal.com](http://www.terrauniversal.com) for more information

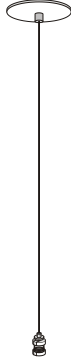
**EXAMPLE: TDC100-2-4L-AMF-BPLSL1.5-DRDM-UNV-1/840**

SERIES	NOMINAL LED LUMENS	NOMINAL LENGTH	MECHANICAL	CONTROLS/ELECTRICAL	DRIVER	VOLTAGE	# OF LED ROWS	CRI / CCT
<b>TDC100</b>							<b>1</b>	
<b>TDC100</b> • TDC100 2" Wide Teardrop Cleanroom Luminaire	<b>1</b> - 1000 lm <b>2</b> - 2000 lm <b>3</b> - 3000 lm <b>4</b> - 4000 lm <b>5</b> - 5000 lm  <b>High Efficacy</b> <b>1HE</b> - 1000 lm <b>2HE</b> - 2000 lm <b>3HE</b> - 3000 lm	<b>2L</b> • 2'	<b>AMF</b> • Antimicrobial Finish  *Leave blank if not specified	<b>BPLSL1.5</b> • 1500 lm Emergency Battery Pack, Slim Casing  <b>WLC(LED RU)</b> • Wireless Control  *Leave blank if not specified	<b>DRDM</b> • 0-10V Dimming Driver	<b>UNV</b> • 120V-277V  <b>120V</b> • 120 Volt  <b>277V</b> • 277 Volt	<b>1</b> • One LED Row	<b>827</b> • 80+CRI / 2700K  <b>830</b> • 80+CRI / 3000K  <b>835</b> • 80+CRI / 3500K  <b>840</b> • 80+CRI / 4000K  <b>850</b> • 80+CRI / 5000K  <b>865</b> • 80+CRI / 6500K  <b>8TW</b> • 80+CRI Tunable White 2700K-6500K  <b>AM8<sup>1</sup></b> • PC Yellow 575 nm - 590 nm  <b>AM9<sup>1</sup></b> • PC Amber 586 nm - 593 nm  <b>AMT<sup>1</sup></b> • True Amber 585 nm - 595 nm  <b>90CRI Also available</b>  Contact customer service for additional CRI/CCT packages.
	<b>2</b> - 2000 lm <b>4</b> - 4000 lm <b>6</b> - 6000 lm <b>8</b> - 8000 lm <b>10</b> - 10000 lm  <b>High Efficacy</b> <b>2HE</b> - 2000 lm <b>4HE</b> - 4000 lm <b>6HE</b> - 6000 lm <b>7HE</b> - 7000 lm	<b>4L</b> • 4'						
	<b>4</b> - 4000 lm <b>8</b> - 8000 lm <b>12</b> - 12000 lm <b>16</b> - 16000 lm <b>20</b> - 20000 lm  <b>High Efficacy</b> <b>4HE</b> - 4000 lm <b>8HE</b> - 8000 lm <b>12HE</b> - 12000 lm <b>14HE</b> - 14000 lm	<b>8L</b> • 8'						
Standard options for TDC100 shown above. For additional options, including lumen packages, controls, lenses, switches, finishes, and more, visit <a href="http://www.terrauniversal.com">www.terrauniversal.com</a> or contact customer service.  <sup>1</sup> For amber and other color LEDs, available lumen packages vary. Contact customer service for more information.								

**ACCESSORIES**

**CANOPY / CABLE SUSPENSION SYSTEM**

• Self-locking, one-step adjustable suspension device with canopy




**433B**

- Canopy with cable
- No power cord
- Cable length 48" and 96"
- Max. Weight 196 lbs.

**433B-48 W**

- COLOR**  
W - White  
B - Black
- CABLE LENGTH**  
48 - 48 inches  
96 - 96 inches  
(other lengths as specified)



**444F**

- Feed-in canopy with straight cord
- Includes power cord
- Cable length 48" and 96"
- Max. Weight 196 lbs

**444F-48W-2C**

- # OF CIRCUITS**  
2C - Two circuits  
LV - 0-10V dimming  
Blank - One circuit
- COLOR**  
W - White  
B - Black
- CABLE LENGTH**  
48 - 48 inches  
96 - 96 inches  
(other lengths as specified)

**BB-TDC100**

- 24 gauge Belly Band
- Screw-on band provides seamless row mounting on surfaces
- Cold-rolled steel, painted after fabrication
- Pre-installed on 8' luminaires to cover gap between 4' lenses



**TERRA UNIVERSAL INC.**  
 Contact Us  
 T: (714) 578-6000 info@TerraUniversal.com  
 800 S. Raymond Ave, Fullerton, CA 92831  
 www.TerraUniversal.com



Due to continued product improvements and enhancements, Terra Universal Inc. reserves the right to alter specifications, dimensions, data, and/or materials without notice. Please visit our website to view the most current information.

© 2026 TERRA UNIVERSAL INC, ALL RIGHTS RESERVED

Revised: 04/06/26



# TDC100 LED 2" Wide Teardrop Cleanroom Luminaire

**SYSTEM DATA:** Additional Lumen Packages Available. Contact Customer Service for More Information

Normal Temp	2'	LED LUMEN PACKAGE	NORMAL AMBIENT TEMPERATURE PRODUCT CODE	DELIVERED LUMENS	SYSTEM WATTS	LUMINAIRE EFFICACY	AMBIENT TEMP.	FLUORESCENT EQUIVALENT	IES FILES
		1000 Lumens (Nominal)	TDC100-1-2L-DRDM-UNV-1/840	1095	7.5	145.4 lm/W	-20°C / 35°C (-4°F / 95°F)	1x F17T8	*
		2000 Lumens (Nominal)	TDC100-2-2L-DRDM-UNV-1/840	1798	12.7	141.5 lm/W	-20°C / 35°C (-4°F / 95°F)	1x F24T5HO 2x F17T8	<a href="#">LA-T3954b</a>
		3000 Lumens (Nominal)	TDC100-3-2L-DRDM-UNV-1/840	2822	20.9	134.8 lm/W	-20°C / 35°C (-4°F / 95°F)	3x F17T8	*
		4000 Lumens (Nominal)	TDC100-4-2L-DRDM-UNV-1/840	3485	26.6	131.1 lm/W	-20°C / 35°C (-4°F / 95°F)	3x F17T8	*
		5000 Lumens (Nominal)	TDC100-5-2L-DRDM-UNV-1/840	4448	35.3	126.0 lm/W	-20°C / 35°C (-4°F / 95°F)	2x F24T5HO 4x F17T8	*

Normal Temp High Efficacy	2'	LED LUMEN PACKAGE	NORMAL AMBIENT TEMPERATURE (HIGH EFFICACY) PRODUCT CODE	DELIVERED LUMENS	SYSTEM WATTS	LUMINAIRE EFFICACY	AMBIENT TEMP.	FLUORESCENT EQUIVALENT	IES FILES
		1000 Lumens (Nominal)	TDC100-1HE-2L-DRDM-UNV-1/840	1112	7.4	150.0 lm/W	-20°C / 35°C (-4°F / 95°F)	1x F17T8	*
		2000 Lumens (Nominal)	TDC100-2HE-2L-DRDM-UNV-1/840	1832	12.5	146.9 lm/W	-20°C / 35°C (-4°F / 95°F)	1x F24T5HO 2x F17T8	*
		3000 Lumens (Nominal)	TDC100-3HE-2L-DRDM-UNV-1/840	2896	20.2	143.1 lm/W	-20°C / 35°C (-4°F / 95°F)	3x F17T8	*

Normal Temp	4'	LED LUMEN PACKAGE	NORMAL AMBIENT TEMPERATURE PRODUCT CODE	DELIVERED LUMENS	SYSTEM WATTS	LUMINAIRE EFFICACY	AMBIENT TEMP.	FLUORESCENT EQUIVALENT	IES FILES
		2000 Lumens (Nominal)	TDC100-2-4L-DRDM-UNV-1/840	1861	12.5	149.2 lm/W	-20°C / 35°C (-4°F / 95°F)	1x F32T8	*
		4000 Lumens (Nominal)	TDC100-4-4L-DRDM-UNV-1/840	3641	25.5	142.6 lm/W	-20°C / 35°C (-4°F / 95°F)	1x F54T5HO 2x F32T8	<a href="#">LA-T3955b</a>
		6000 Lumens (Nominal)	TDC100-6-4L-DRDM-UNV-1/840	5377	39.1	137.7 lm/W	-20°C / 35°C (-4°F / 95°F)	3x F32T8	*
		8000 Lumens (Nominal)	TDC100-8-4L-DRDM-UNV-1/840	7079	53.1	133.4 lm/W	-20°C / 35°C (-4°F / 95°F)	2x F54T5HO 4x F32T8	*
		10000 Lumens (Nominal)	TDC100-10-4L-DRDM-UNV-1/840	9037	70.5	128.2 lm/W	-20°C / 35°C (-4°F / 95°F)	5x F32T8	*

Normal Temp High Efficacy	4'	LED LUMEN PACKAGE	NORMAL AMBIENT TEMPERATURE (HIGH EFFICACY) PRODUCT CODE	DELIVERED LUMENS	SYSTEM WATTS	LUMINAIRE EFFICACY	AMBIENT TEMP.	FLUORESCENT EQUIVALENT	IES FILES
		2000 Lumens (Nominal)	TDC100-2HE-4L-DRDM-UNV-1/840	1891	12.4	153.1 lm/W	-20°C / 35°C (-4°F / 95°F)	1x F32T8	*
		4000 Lumens (Nominal)	TDC100-4HE-4L-DRDM-UNV-1/840	3721	24.9	149.2 lm/W	-20°C / 35°C (-4°F / 95°F)	1x F54T5HO 2x F32T8	*
		6000 Lumens (Nominal)	TDC100-6HE-4L-DRDM-UNV-1/840	5525	37.8	146.3 lm/W	-20°C / 35°C (-4°F / 95°F)	3x F32T8	*
		7000 Lumens (Nominal)	TDC100-7HE-4L-DRDM-UNV-1/840	6240	43.1	144.9 lm/W	-20°C / 35°C (-4°F / 95°F)	3x F32T8	*

**NOTE:** System data as of 8/15/24.  
Subject to change without notice.  
System data is based on 120V input voltage. Actual performance may differ as a result of end-user environment and application. This fixture has been tested and listed in accordance with UL Standards. L.A. Lighting certifies that it will operate safely when installed properly, and within an ambient temperature range noted in the system data table. Additional lumen packages and color temperatures available.



**TERRA UNIVERSAL INC.**  
Contact Us  
T: (714) 578-6000 info@TerraUniversal.com  
800 S. Raymond Ave., Fullerton, CA 92831  
www.TerraUniversal.com



Due to continued product improvements and enhancements, Terra Universal Inc. reserves the right to alter specifications, dimensions, data, and/or materials without notice. Please visit our website to view the most current information.

© 2026 TERRA UNIVERSAL INC, ALL RIGHTS RESERVED

Revised: 04/06/26



# TDC100 LED 2" Wide Teardrop Cleanroom Luminaire

SYSTEM DATA: Additional Lumen Packages Available. Contact Customer Service for More Information

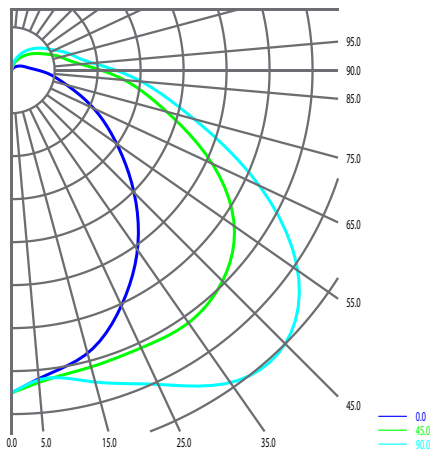
Normal Temp	8'	LED LUMEN PACKAGE	NORMAL AMBIENT TEMPERATURE PRODUCT CODE	DELIVERED LUMENS	SYSTEM WATTS	LUMINAIRE EFFICACY	AMBIENT TEMP.	FLUORESCENT EQUIVALENT	IES FILES
		4000 Lumens (Nominal)	TDC100-4-8L-DRDM-UNV-1/840	3748	24.9	150.3 lm/W	-20°C / 35°C (-4°F / 95°F)	2x F32T8	*
		8000 Lumens (Nominal)	TDC100-8-8L-DRDM-UNV-1/840	7330	50.9	143.9 lm/W	-20°C / 35°C (-4°F / 95°F)	2x F54T5HO 4x F32T8	*
		12000 Lumens (Nominal)	TDC100-12-8L-DRDM-UNV-1/840	10862	78.0	139.3 lm/W	-20°C / 35°C (-4°F / 95°F)	6x F32T8	<a href="#">LA-3956b</a>
		16000 Lumens (Nominal)	TDC100-16-8L-DRDM-UNV-1/840	14214	106.1	133.9 lm/W	-20°C / 35°C (-4°F / 95°F)	4x F54T5HO 8x F32T8	*
		20000 Lumens (Nominal)	TDC100-20-8L-DRDM-UNV-1/840	17824	138.0	129.2 lm/W	-20°C / 35°C (-4°F / 95°F)	4x F54T5HO 8x F32T8	*

Normal Temp High Efficacy	8'	LED LUMEN PACKAGE	NORMAL AMBIENT TEMPERATURE (HIGH EFFICACY) PRODUCT CODE	DELIVERED LUMENS	SYSTEM WATTS	LUMINAIRE EFFICACY	AMBIENT TEMP.	FLUORESCENT EQUIVALENT	IES FILES
		4000 Lumens (Nominal)	TDC100-4HE-8L-DRDM-UNV-1/840	3809	24.6	154.9 lm/W	-20°C / 35°C (-4°F / 95°F)	2x F32T8	*
		8000 Lumens (Nominal)	TDC100-8HE-8L-DRDM-UNV-1/840	7130	47.2	151.1 lm/W	-20°C / 35°C (-4°F / 95°F)	2x F54T5HO 4x F32T8	*
		12000 Lumens (Nominal)	TDC100-12HE-8L-DRDM-UNV-1/840	10770	72.8	147.9 lm/W	-20°C / 35°C (-4°F / 95°F)	6x F32T8	*
		14000 Lumens (Nominal)	TDC100-14HE-8L-DRDM-UNV-1/840	12570	86.0	146.2 lm/W	-20°C / 35°C (-4°F / 95°F)	6x F32T8	*

## PHOTOMETRIC DATA

### TDC100-4-4L-DRDM-UNV-1/835

TEST NO. = LA-T3472  
 LED ROWS = 1  
 SYSTEM WATTS (W) = 31.2  
 CRI ≥ 80  
 L70(Hrs.) ≥ 50,000  
 PHOTOMETRY TYPE = C



### ZONAL LUMEN SUMMARY

DEGREES	LUMENS	% LAMP	% FIXTURE
0-30	597	14	16
0-40	1039	25	28
0-60	2087	50	57
0-90	3132	75	86
90-120	347	8.4	9.6
90-150	456	11.7	12.6
90-180	469	11.3	13
0-180	3601	87.2	100

### SPACING CRITERION

ALONG	ACROSS
1.11	1.77

Luminaire Output = 4126 lumens  
 Luminaire Efficacy = 132.2 lm/W  
 Luminaire Efficiency = 87.3%



**TERRA UNIVERSAL INC.**  
 Contact Us  
 T: (714) 578-6000 info@TerraUniversal.com  
 800 S. Raymond Ave, Fullerton, CA 92831  
 www.TerraUniversal.com



Due to continued product improvements and enhancements, Terra Universal Inc. reserves the right to alter specifications, dimensions, data, and/or materials without notice. Please visit our website to view the most current information.

© 2026 TERRA UNIVERSAL INC, ALL RIGHTS RESERVED

Revised: 04/06/26

