

Prism™

Class II Biological Safety Cabinets

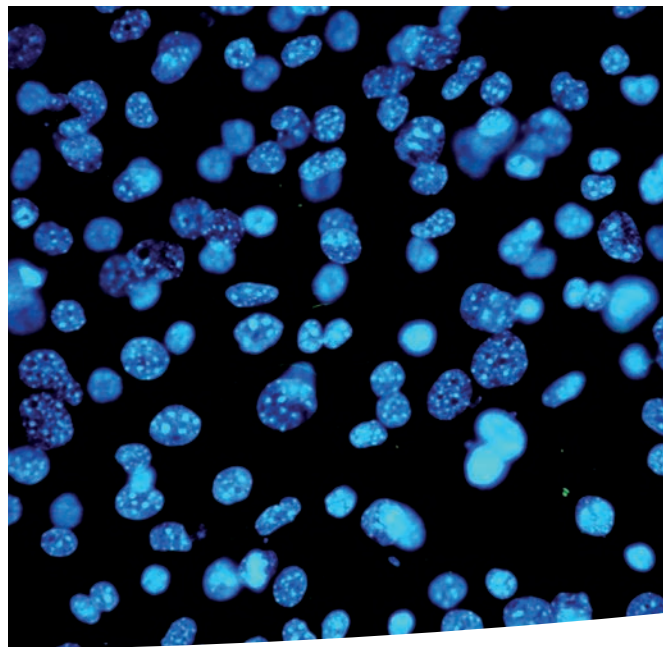
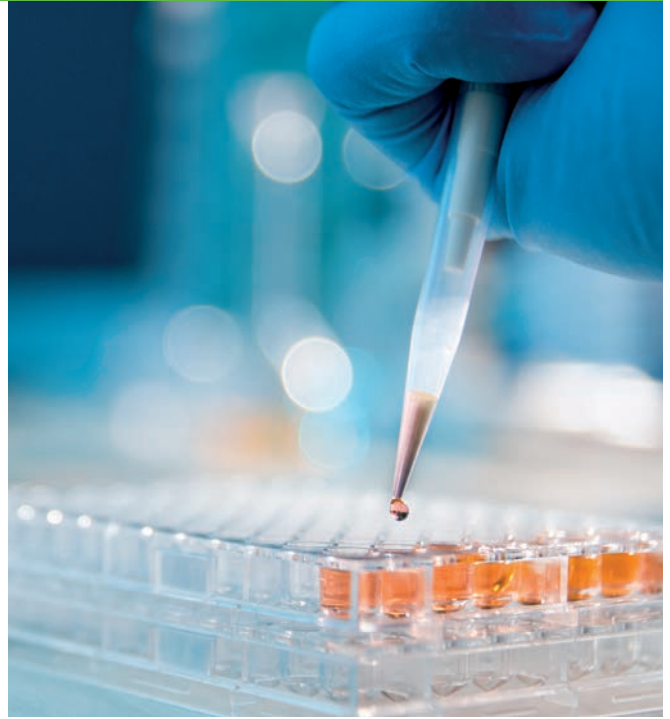




Table of Contents

The Labconco Difference	3	Prism Class II, Type A2 Biosafety Cabinets	
Protection Runs in the Family	4	Features & Benefits	10
Labconco Prism™		Ordering Information	11
How It Works	5	Specifications	12
Streamlined Design	6	Dimensional Data	13
Safety Features	7	Accessories	14
Performance Features	8	Exhaust Accessories	15
Comfort Features	9		

The Labconco Difference: Over 50 Years of Biosafety Expertise.

Labconco's Prism™ Biosafety Cabinet delivers protection where it matters most — for you, your work, and your lab environment. Engineered for performance, designed for usability, and built to last, Prism BSCs make high-level biosafety accessible without compromise.

Streamlined. Prism BSCs include core features scientists and researchers need most. A cleanable stainless steel interior, dished work surface, and 5" touchscreen support scientific workflows without distraction.

Safe. Labconco's trusted Constant Airflow Profile™ (CAP) technology continuously monitors and adjusts airflow to maintain safe working conditions. Integrated alerts and alarms keep users informed in real time. Safety is built in — not bolted on.

Reliable. Constructed with high-grade materials and backed by more than 50 years of biosafety expertise, the Prism is designed for long-term dependability. Durable and thoughtfully engineered, it reflects Labconco's commitment to quality and safety.

Streamlined. Safe. Reliable. Prism is the smart choice for labs that value protection, performance, and peace of mind.



Protection Runs in the Family

Trusted Performance. Streamlined Design. Same Labconco DNA.



Meet Prism™ — the latest addition to Labconco’s industry-leading biosafety cabinet lineup, built on the same foundation as Logic® and Axiom® cabinets. The Prism delivers containment confidence, cleanability, and intelligence Labconco is known for — all in a streamlined package designed for everyday research.

With over 50 years of biosafety innovation behind it, Prism reflects Labconco’s legacy of engineering excellence, combining dynamic airflow control, intuitive alerts and user-focused ergonomics. Every detail purpose-built for practical, daily use. That’s the Labconco difference: safety and quality are in our DNA.



1976

Labconco introduces the Laminar Flow Biohazard Safety Cabinet

1983

The Purifier brought the first ever angled sash to Class II BSCs

2000

The Purifier Delta modernized ergonomics with Inclination Technology™

2005

The Purifier Logic improved on ergonomics and technology with the first line-of-sight LCD display

2014

The introduction of Axiom brought an entirely new BSC – The Type C1 – to researchers

2024

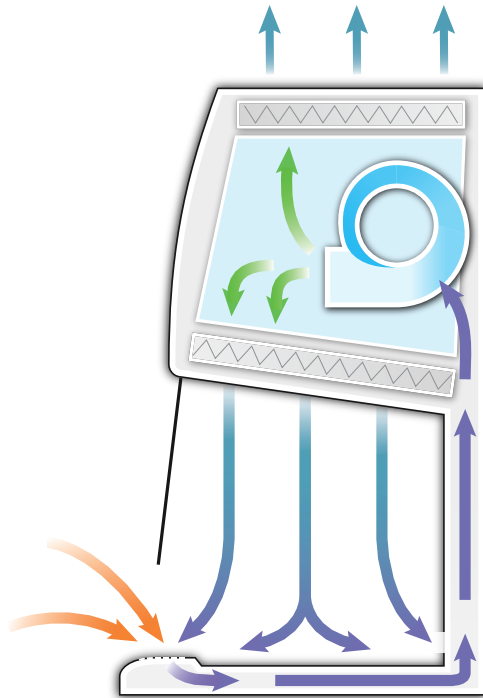
The redesign of the Logic introduced a true internal touchscreen and energy-saving BalanceFlow™ plenum to Labconco’s most advanced BSC

2026

Prism joins the Labconco BSC family, marking 50 years of BSC innovations with a streamlined design

Prism™ Biosafety Cabinets

How It Works



- ▶ Room Air
- ▶ Contaminated, Negative Pressure Air
- ▶ Contaminated, Positive Pressure Air
- ▶ HEPA Filtered, Positive Pressure Air

Class II, Type A2 BSCs

The Prism is a Class II, Type A2 BSC — the most common type of Class II cabinet used globally due to their broad compatibility with applications with little to no volatile chemicals* present.

How An A2 BSC Works

Room air is drawn into the grille located in the air foil. The air in the area beneath the work surface is a mixture of unfiltered room air and air that has just passed through the work area.

This contaminated air is drawn by the blower through the back plenum of the cabinet, where approximately 70% of the air is recirculated through the supply HEPA filter and back over the work area.

The balance of the contaminated air is discharged to the environment after passing through the exhaust HEPA filter.

*with use of Ventus II Canopy Connection.



Prism™ Biosafety Cabinets

Streamlined Design



Not Your Average Cabinet

Streamlined and reliable for your success.

- Prism OS with touch control — while working inside the cabinet
- Sustainable and efficient — and then some
- Industry leading airflow stability
- Exceptionally low energy and noise
- 4' model with 10" sash uses just 205 watts and operates at just 60 dbA
- Inclination Technology™ — advanced ergonomics for all-day comfort
- Smooth, coved design for easy disinfection in critical environments
- Full 5 year warranty

Prism OS - Optimized For You

Full cabinet status at a glance

- Large 5" touchscreen display
- Line-of-sight viewing location while seated
- Simplified home screen with airflow status, filter life monitoring and alert messages
- Maintains data logs & certification records
- Remote connectivity capable*
- Customizable email alerts for cabinet status, alarms, and filter life*

*Requires Remote Communication Board PN 3289000.

Prism™ Biosafety Cabinets

Safety Features



Line-of-Sight Display with Prism OS.

Unitized Construction – Welded 304 stainless steel hull and solid steel plenum are pressure tested and built to last.

HEPA Filters – Two 99.99+% efficient filters trap biohazards and produce an ISO Class 5 environment to keep users and their work safe.

Easy to Decontaminate – Smooth, covered corners throughout interior and exterior.

Dished Work Surface – Contains spills for easier cleaning.

Line-of-sight Touchscreen Display – Large 5" display clearly communicates cabinet status without the need to look away from critical work.

Prism™ OS – Advanced cabinet control software clearly visualizes alert and alarm messages, highlighting impacted areas of the cabinet.

Prism OS – Keeping You Safe



Sash Alarm and airflow blockage displays on Prism OS.

Prism™ Biosafety Cabinets

Performance Features

Smart, sustainable

Prism BSCs save on energy while providing longevity and comfort. Prism BSCs are powered by innovative Electronically Commutated Motor (ECM) technology that makes a difference.

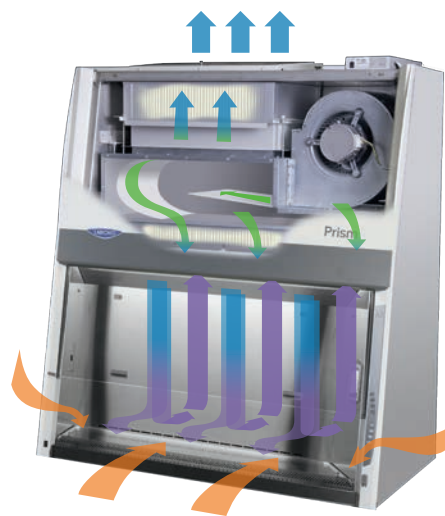
- Uses less than half the energy compared to other BSCs
- Industry-low noise for single-blower cabinets, providing comfortable lab conditions
- 15+ year average motor life eliminates service costs
- 10+ year filter life reduces expensive replacement costs
- Generates less heat for cooler working conditions



Advanced air stability

Constant Airflow Profile™ (CAP) and BalanceFlow™ set the standard for BSC airflow control to keep you safe. Auto-adjusting airflow ensures your BSC never misses a beat while you work, and the infinitely adjustable BalanceFlow plenum ensures even air distribution throughout the work area.

- CAP auto-adjusts BSC airflows as filters load to keep you safe
- Precise operation keeps BSC airflows within 2% of their original setpoint
- Eliminates the need for airflow sensors, which are less accurate and require recalibration annually



Operating Cost Comparison

BSC Energy Usage*	Labconco A2	Other Cabinet A	Other Cabinet B	Other Cabinet C
Motor Type	ECM	AC 3-Phase	ECM	Dual-motor ECM
Energy Consumption (watts)	205	460	334	190
Annual Energy Cost**	\$56.41	\$126.58	\$91.91	\$52.84
Annual Certification	\$250	\$250	\$250	\$250
Filter Change(s)	\$1,500	\$1,500	\$1,500	\$3,000
15-year Operational Cost	\$6,096	\$7,149	\$6,629	\$7,534

*Based on 4-ft, 10" sash opening BSC, recirculating

**Based on 8-hr day, 2080 hours per year at \$0.1323/kWh

Prism™ Biosafety Cabinets

Comfort Features



Line-of-Sight Display and Touch-Pad Controls – Full control is within reach while seated.

Inclination Technology™ – A user-centric design approach to make Labconco BSCs the most comfortable and ergonomic available.

ADA Compliant – The line-of-sight touchscreen, all controls, outlets, and optional service fixture are within easy reach from a seated position.*

Curved Inlet Grille – Provides comfortable area to rest arms. No additional armrests are needed.

Quiet ECM Blower – Exceeds NSF requirements for quiet operation and is more energy efficient than other comparable motors.

Bright LED Lighting – Illuminates the interior up to 180 foot-candles (1,937 lux) for maximum visibility.

Flexible Base Stands – From telescoping legs to full hydraulic adjustment, diverse base stands provide flexibility to adjust the working height to accommodate many users.



Electrical Outlet Cover – Can be opened with one finger and then gently and slowly self-closes. Mounts flush and flat against the side wall for complete decontamination.



Comfort covered from every angle – The total ergonomic package of the Prism provides a comfortable experience while using the BSC. Every aspect of the design is engineered with the user in mind.

* Meets requirements for Americans with Disabilities Act Standards for Accessible Design

Prism™ Biosafety Cabinets

Features & Benefits

Class II Airflow

Provides Personnel, Product, and Environmental protection from hazardous pathogens and particles.

Type A2

- Approximately 70% Recirculated, 30% Exhausted
- Recirculating or Canopy Ducted

NSF 49 Listed

Each Labconco Class II BSC exceeds globally recognized performance and construction requirements.

Unitized Construction

A welded 304 stainless steel cabinet hull, dished work surface, and solid steel plenum are built to last.

Long-Life HEPA Filters

Dual filters are 99.99+% efficient (at 0.3 microns), providing ISO Class 5 or better air.



Constant Airflow Profile™ (CAP)

Continuously monitors and maintains safe inflow and downflow to protect users and samples.

Advanced ECM Blower

Combined with CAP™ technology, reduces energy consumption and noise, improving user comfort and safety.

Effortless Disinfection

304 stainless steel interior withstands routine disinfection. Coved corners and dished work surface are easily cleanable.

Sustainable Design

Each cabinet is constructed with more than 70% recycled materials. An ECM motor and LED lighting consume as little as 205 watts.

American Made

The Prism is engineered and built in the USA using locally sourced steel, glass, and electronic components.

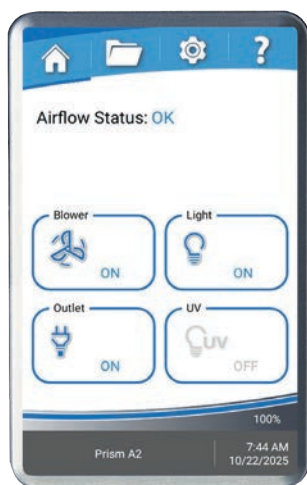
Prism OS

Conveniently displays all cabinet information on a bright 5" line-of-sight touchscreen.

Inclination Technology

A sloped sash, curved airfoil that functions as armrest, large working area, and eye-level display maximize comfort.

Prism OS Information Center



Touchscreen Display

Large 5" screen clearly visualizes cabinet conditions for effortless monitoring of cabinet behaviors.

Filter Life Indicator

Accurately displays remaining HEPA filter life in real time. Alerts users at 20% and 10% before alarming at 0%.

Airflow Status

Displays current status of airflow within cabinet for consistent confirmation of safety.

Data Logging & Connectivity

Export system data logs and records via USB, or connect to Prism OS remotely for 24/7 cabinet monitoring with optional Remote Communication Board accessory.

User Convenience

Prism OS includes a programmable experiment and UV light timer, data logging and a full certification menu.

Alerts & Alarms

Large, clear visual and audible signals notify users of unsafe cabinet conditions.

Prism™ Biosafety Cabinets

Ordering Information

Catalog Number Configurator:

Use this key to configure the nine digit catalog number to order your Prism Class II, Type A2 Biosafety Cabinet.

3 0 2 1 7

Select the **WIDTH** of your cabinet. This is the fourth digit of your catalog number.

4 = 4' 6 = 6'

Select the **TELESCOPING BASE STAND** option. This is the seventh digit of your catalog number.

0 = None

1 = Included

All Prism models feature a **10" SASH OPENING**.

Select the **ELECTRICAL CONFIGURATION** and **PLUG TYPE**. These are the eighth and ninth digits of your catalog number.

02 = 115V, 15/20A, 60 Hz, with plug for North America

12 = 230V, 50/60 Hz, with plug for North America

22 = 100V, 15/20A, 50/60 Hz, with plug for Japan

32 = 230V, 50/60 Hz, with Schuko plug

42 = 230V, 50/60 Hz, with plug for China/Australia

52 = 230V, 50/60 Hz, with plug for Great Britain (UK)

72 = 230V, 50/60 Hz, with plug for India

Plug Configurations



115V, 15A
for North America
100V, 15A for Japan
(4' width)



115V, 20A
for North America
100V, 20A for Japan
(6' width)



230V
for North America



230V
Schuko



230V
for China/Australia



230V
for Great Britain (UK)



230V
for India

Technical Specifications

Nominal Width	Energy Requirements*		Watts	Shipping Weight	Shipping Weight with Stand
	100V or 115V	230V			
4'	12A	6A	205	725 lbs. (329 kg)	808 lbs. (367 kg)
6'	16A	8A	420	992 lbs. (450 kg)	1091 lbs. (495 kg)

* Dedicated, non-GFI outlet required. Acceptable voltage range +/-10% nominal value.

Prism™ Biosafety Cabinets

Specifications



All models feature:

- Long-life DC Electronically Commutated Motor (ECM)
- * Constant Airflow Profile™ (CAP) airflow monitoring system
- * BalanceFlow™ plenum provides energy-efficiency and ultra-quiet operation*
- * Easy clean top cover that promotes even exhaust airflow from the top cover
- Intrinsically-safe negative pressure design
- Fully scannable 99.99+% efficient supply and exhaust HEPA filters.
- * Prism OS and 5" interior-mounted, line-of-sight touchscreen information center with:
 - BSC status screen with airflow and operational conditions clearly displayed
 - Real-time HEPA filter life monitoring with alerts to warn when filter life diminishes to 20% and 10% before alarming at 0%
 - Full operational maintenance and certification logs for detailed record keeping
 - Password protection for cabinet settings
 - 8 Languages
- Bright, glare-free LED lighting up to 180 foot-candles (1937 lux) located outside the contaminated work area
- * Curved, stainless steel inlet grille with waterfall design and Reserve-Air™ Secondary Airflow Slots
- * Air-Wave™ Entry System at access opening to enhance containment

- * Contain-Air™ Negative Pressure Channel at top of sash to enhance containment
- * Two electrical outlets. Flush mounted stainless steel cover with dampened hinges
 - 115V GFCI, double receptacles, maximum amperage draw 5A
 - 230V, single receptacles, maximum amperage draw 3A
- 10° angled, fully closing sash. 1/4" tempered safety glass with counterbalanced, anti-racking, easy-to-lift mechanism
- Unitized, pressure tested stainless steel interior
- Optic White epoxy-coated steel exterior
- Removable towel catch located under work surface
- 10" working sash height
- * 22.5" max. sash opening & 27.0" viewing height
- Removable, seamless type 304 stainless steel, dished work surface with lift out knobs
- Integral work surface support and 200 lb. work surface capacity
- Nominal inflow velocity of 105 fpm (0.53 m/sec)
- Nominal downflow velocity of 55 fpm (0.28 m/sec)
- Approximately 70% air recirculation
- Noise level <60 dB (4ft 10" model)
- 10' power cord with plug
- Five year warranty

Models conform to the following standards:

- NSF/ANSI Standard 49 listed
- ISO Class 5 (Grade A) per ISO 14644-1
- UL Standard 61010-1
- CAN/CSA 22.2 No. 61010-1
- CE/UKCA Mark (230V models)
- * ADA-compliant

Options include:

- Unassembled, NSF-approved, epoxy-coated steel, non-welded telescoping base stand with leveling feet

All models require (not included):

- Supporting base if non-welded stand option is not selected

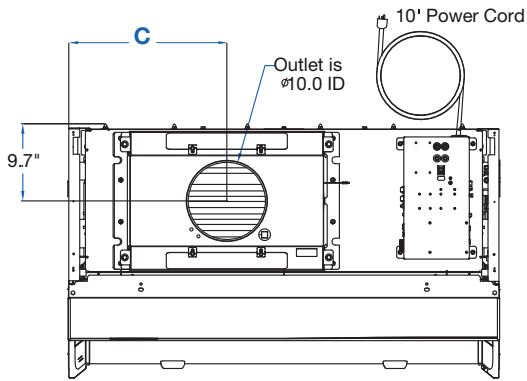
* Labconco exclusive feature

*U.S. Patent 12,325,052



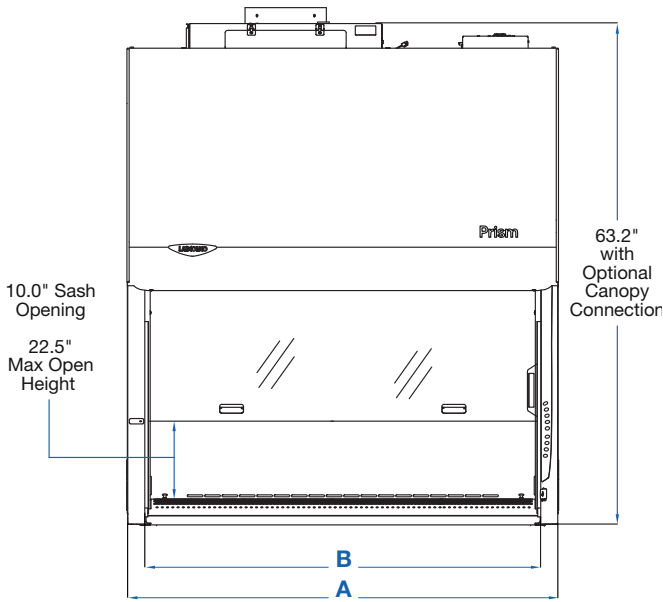
Prism™ Biosafety Cabinets

Dimensional Data

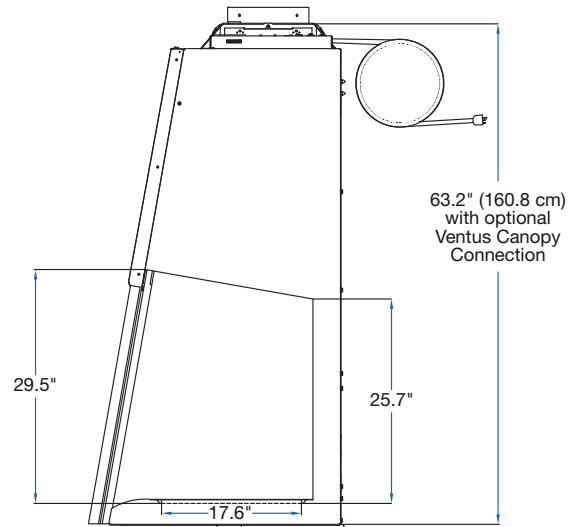


TOP

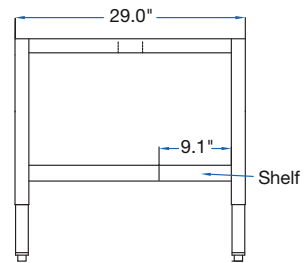
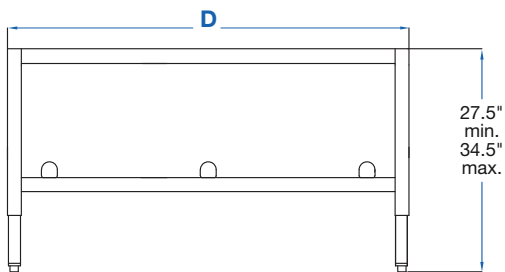
Nominal Width	A	B	C	D
4'	54.4" (138.2 cm)	48.5" (123.2 cm)	19.9" (50.5 cm)	50.5" (128.3 cm)
6'	78.4" (199.1 cm)	72.5" (184.2 cm)	32.9" (83.6 cm)	74.5" (189.2 cm)



FRONT



SIDE



Note: Shown without A2 (recirculating) Easy-Clean exhaust cover. Overall height with Easy-Clean cover is 61.9".

Prism™ Biosafety Cabinets

Accessories



A2 Airflow Sensor. Allows display of inflow and downflow velocities on screen. **Installation and certifier calibration required.**

Catalog Number	Cabinet	Shipping Weight
3277600	A2	2.0 lbs (0.9 kg)
3277610	A2 with Canopy	2.0 lbs (0.9 kg)



IV Bar Kits. Includes IV bar, mounting hardware and four hangers, two short and two long. **Installation required.**

Catalog Number	Cabinet Width	Shipping Weight
3288901	4'	4.0 lbs. (1.8 kg)
3288903	6'	6.0 lbs. (2.7 kg)



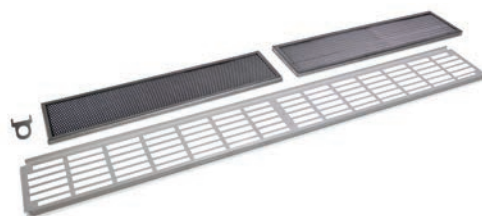
3289100 - UV Lamp Kit. For field install of UV lamp into cabinets. Includes 254 nm UV lamp and ballast. All voltages. **Installation required.** Shipping weight 5 lbs. (2.3 kg)



3282400—Vacu-Pass Cord & Cable Portal Kit. NSF-approved portal allows passage of a cable through right- or left-side wall. Accommodates cords/cables with dia. of 1/4" and 1/2". **Installation required.** Shipping weight 1.0 lbs. (0.5 kg)



3747500—Service Fixture Kit. Includes serrated hose tip with ball valve, quarter turn control handle and hardware. Cabinets are factory-prepared for up to six fixtures. **Installation required.** Shipping weight 2.0 lbs. (0.9 kg)



Washable Prefilter Kits. Washable Prefilter Kits. Each kit consists of a washable/reusable, metal screen-type prefilter and installation hardware. **Installation required.**

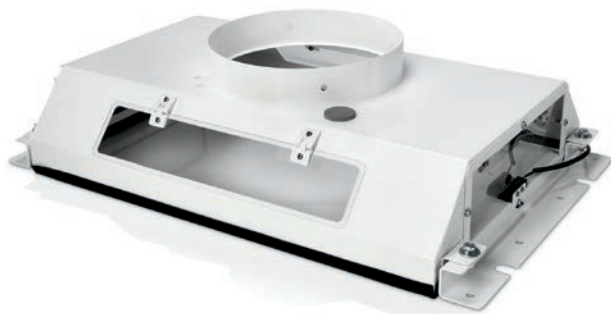
Catalog Number	Cabinet Width	Shipping Weight
3288601	4'	5.0 lbs. (2.3 kg)
3288603	6'	7.0 lbs. (3.2 kg)



3408500—Sash-Glider Kit. Cleans both sides of sash while cabinet is closed to avoid contamination risks. Includes two microfiber sheets and ten disposable scrubbing strips. Shipping weight 5.0 lbs. (2.0 kg). Replacement strips, (3408600) package of 25. Shipping weight 2.0 lbs. (0.9 kg)

Prism™ Biosafety Cabinets

Exhaust Accessories



Ventus II Canopy Connection. For thimble exhausting Prism Type A2 cabinets. NSF approved design detects insufficient exhaust in less than one second and signals Prism OS with visual and audible alarms. Alarm increases motor to maximum speed for personnel safety. Adds only 1.4" (3.6 cm) to cabinet height. Epoxy-coated steel. Collar is 10" (25.4 cm) ID. Exhaust connection is required. **Air-tight Damper (3776800) recommended.** Shipping weight 75 lbs. (34 kg)

Catalog Number	For Use With	Required Exhaust Volume* CFM @ x" w.g.
		10" Sash
3889211	4' Type A2	462@0.12"
3889213	6' Type A2	770@0.27"

* Exhaust volumes listed are concurrent balance values obtained in the exhaust duct via traverse methodology. Actual volume may be lower using Direct Inflow Measurement methodology.

3289000 – Remote Communication Board. Kit includes three dry contact relays, USB data output, RS-232 RJ45 data output and an Ethernet pass-through. **Installation required. For Type A2 cabinets only.** Shipping weight 1.0 lb (0.5 kg).



Flex Duct Connection.



Catalog Number	Length	Shipping Weight
7034800	1'	5 lbs (2.3 kg)
7034801	3'	10 lbs (4.5 kg)
7034802	6'	15 lbs (6.8 kg)
7034803	10'	25 lbs (11.3 kg)

3776800—Air-Tight Damper. Mounts atop Ventus Canopy to adjust exhaust airflow and closes for decontamination procedures. Manually adjustable. Type 304 stainless steel. 10" (25.4 cm) high with 10" (25.4 cm) dia. OD inlet & outlet. Shipping weight 14 lbs. (6.3 kg)



3858800—Backdraft Damper. Mounts in vertical duct run to prevent reversal of flow of the exhaust system. 3.0" (8 cm) high with 10" (25.4 cm) dia. OD inlet and outlet. Shipping weight 2.0 lbs. (0.9 kg)



Spectrum Blowers. Recommended for canopy-ducted Type A2 BSCs.

Phenolic-coated impeller and housing, epoxy-coated steel base and weather cover, ECM or VFD motor. Contact Labconco with questions about blower sizing and other blowers available.



Catalog Number	For Use With**	Electrical Requirements	HP	Shipping Weight
177050100	Type A2	115/230V, 50/60 Hz, 1 phase, 10/6A	1	150 lbs. (68 kg)

Blower Dimensions

177050100	
Inlet	10.9" (27.7 cm) ID
Outlet	10.0" w x 5.5" d (25.4 x 14 cm)
Blower Transition Adapter Required	4722401

**Visit labconco.com to request information
for all Labconco products.**



LABCONCO CORPORATION

8811 Prospect Avenue
Kansas City, MO 64132

(800) 821-5525 | (816) 333-8811

labconco.com

©2026 LABCONCO CORPORATION

Product design subject to change without notice.

2-35-03/02/2026

