

LABCONCO

pure² Aseptic Isolator

Advanced Sterile Conditions

Unmatched Engineering

- Grade A (ISO Class 5) unidirectional airflow
- Smooth 316L interior
- Positive and negative pressure
- Large airlocks with air shower functionality

Precise & Reliable

- Fully integrated, fast and safe H₂O₂
- 21 CFR 11 compliant Siemens HMI
- Dual HEPA Filtered (H14) supply & exhaust airflow



Flexible & Customizable

- Modular and configurable
- 2 and 4 glove models
- Diverse customizations

9" Color Touch Display

User friendly Siemens PLC:

- 21 CFR 11 Compliant
- Effortless operation
- Trend, batch, and audit trail data

Smart Glove Ports

- Large, comfortable gloves
- Seamless integration with SKAN Wireless GT2 glove testers

Integrated H₂O₂ Decon

Fully integrated skanfog system speeds transfers with 21 minute validated cycle times.

nanox Catalytic Converter

Built-in catalytic converter technology directly captures H₂O₂ molecules, for fast and effective aeration without external venting

Aseptic-Toxic Capable

Patented SKAN H14 FIPA filters simplify safe filter changes. Redundant filtration ensures the safest containment and sample protection

Application Space

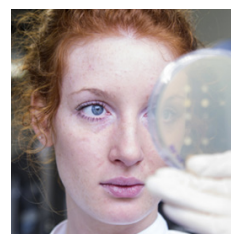


Sterility Testing

- Plug-and-play design
- Optional integration of sterility testing pump (Millipore or Sartorius)
- Complies with GMP and FDA 21 CFR Part 11

Biosafety

- Exceeds definition for Class III Biosafety Cabinets
- Negative pressure operation
- Glove port testing capable
- Integral H₂O₂ decon for main and transfer chambers

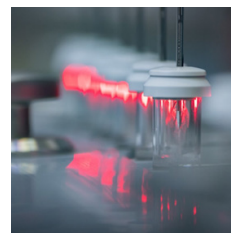


Pharma Manufacturing

- Suitable for aseptic and aseptic-toxic applications (DIN 12980 compliant)
- Complies with GMP and FDA 21 CFR Part 11
- Optional integration of filling equipment

Cell and Gene Therapy.

- Flexibly adapts to your work and manufacturing process
- Validated skanfog reduces transfers to just 21 minutes
- Assured operator and environmental protection, with H₂O₂ decontamination



pure² Aseptic Isolator

Accessorize your Aseptic Isolator



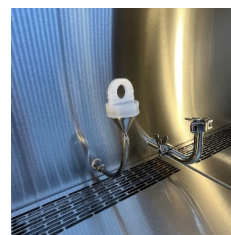
Rapid Transfer Port. Designed for safe and efficient transfer of materials into and out of the aseptic environment during active processing.

Sterility Pump. The pure² isolator supports integration with industry-leading sterility pumps, including models from Sartorius and Merck Millipore to ensure precise and reliable fluid transfer while maintaining sterility.



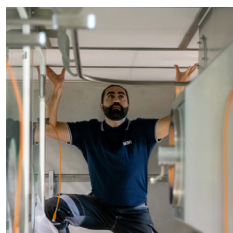
Custom Passthroughs. They can accommodate a wide range of workflows and equipment. Designed with flexibility in mind, these pass-throughs maintain the integrity of the aseptic environment while allowing seamless integration of tools, sensors, or utilities.

Environmental Monitoring. Equipped to support environmental monitoring solutions, including non-viable particle counting and viable monitoring. These systems ensure assessment of air quality and microbial control within the aseptic environment.



And more... if you can dream it, we can do it.

Available Services



Installation. Smooth and hassle-free setup with our professional installation team. From site preparation to testing, we handle every detail.

Factory Acceptance Testing. Experience a one-day Factory Acceptance Testing (FAT) in Allschwil, Switzerland. This hands-on session allows for personal validation of your pure² to all specifications through rigorous testing.



MBQ Cycle Development. Optimize your pure² system's H₂O₂ performance with customized MBQ (Microbiological Qualification) cycle development.

IQOQ Qualification. Comprehensive Installation Qualification (IQ) and Operational Qualification (OQ) documentation is available to streamline compliance with regulatory requirements. Available for both pure² and Wireless GT2 glove tester.



Interested in learning more?

Visit labconco.com/pure-2

LABCONCO CORPORATION

8811 Prospect Avenue
Kansas City, MO 64132
(800) 821-5525 | (816) 333-8811
labconco.com



©2025 LABCONCO CORPORATION
Printed in the U.S.A.
Design subject to change without notice.
2-59 20250225