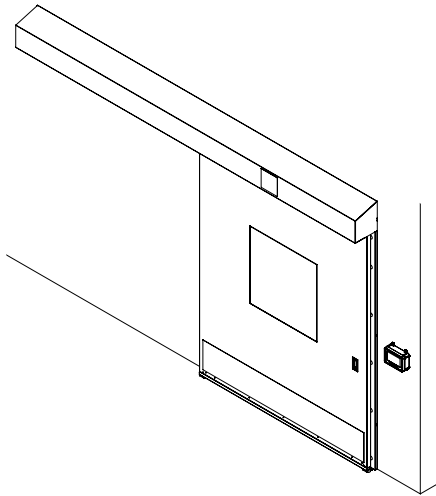


Bi-Parting Door



Single Slide Door

NOTICE TO USER 2

SAFETY 3

COMPONENTS 5

INSTALLATION

Preparation 6

Door Jamb 7

Header/Side Jamb(s) 8

Panel(s) 11

Adjustments (Panel) 12

Electrical 13

Shroud 15

Final Checklist 15

ELECTRICAL

Controls Back Panel 16

Field Wiring Diagram 17

Wiring Diagram 18

Activation Wiring Diagram 19

Interlocks, Air Curtains 20

OPERATION

Close, Stop, and Open 22

Security 22

Common Locations (i-COMM 3) 23

Common Tasks (i-COMM 3) 23

Verify Operation 23

MAINTENANCE

Planned Maintenance 24

TROUBLESHOOTING 25

PARTS

Controls Back Panel 26

ARCHITECTURAL DRAWINGS

Single Slide Door – Slide Right to Open 27

Single Slide Door – Slide Left to Open 28

Bi-Part Door 29

ABBREVIATIONS 30

WARRANTY 32



NOTICE TO USER

Thank you for purchasing a Rite-Hite product.

The ISO-Clean Glider is a clean room door (bi-parting or single sliding).

Read and understand this manual before installation, service, or operation of this equipment.

Before work begins, make sure space clearance requirements from architectural drawings.

Use i-COMM 3 manual with this manual for complete installation and operation instructions.

Complete "**Final Checklist**" on page 15 before leaving site.

Store manual near the unit.

The English version of this manual shall prevail over any error in, or conflicting interpretation of, any translations.

Rite-Hite reserves the right to substitute and/or modify parts and drawings. If separate prints are included with the unit, they supersede those contained in the manual.

When ordering parts, include your door serial or RHC number located on bottom of shroud near controls (refer to **Figure 1 on page 5**).

For best results, have this product installed and serviced by an authorized Rite-Hite representative.

A Planned Maintenance Program (P.M.P.), customized to your specific operation is available and recommended. For a P.M.P., contact your local Rite-Hite representative or Rite-Hite technical support at (U.S.) 1-563-589-2722, 1-888-456-3625, (S.A.) +55 21 99616 4421, (E.U.) +49-5693 98700.

NOTICE

Store dry between 40° F and 80° F (4° C and 27° C).

Patent Coverage: www.ritehite.com/patents

Manufactured by Rite-Hite Doors, Inc.

FCC Compliance

NOTE: This equipment has been tested and found to comply with the limits for a Class A digital device, pursuant to Part 15 of the FCC Rules. These limits are designed to provide reasonable protection against harmful interference when the equipment is operated in a commercial environment. This equipment generates, uses, and can radiate radio frequency energy and, if not installed and used in accordance with the instruction manual, may cause harmful interference to radio communications. Operation of this equipment in a residential area is likely to cause harmful interference in which case the user will be required to correct the interference at his own expense.

NOTE: Changes or modifications not expressly approved by the party responsible for compliance could void the user's authority to operate the equipment.

This device complies with Part 15 of the FCC Rules. Operation is subject to the following two conditions:

1. This device may not cause harmful interference.
2. This device must accept any interference received, including interference that may cause undesirable operation.

May Contain Approved Transmitter Module(s):

FCC ID: XMR201910BG95M3 IC: 10224A-2019BG95M3

FCC ID: 2AC7Z-ESPS3WROOM1 IC: 21098-ESPS3WROOM1

FCC ID: MCQ-XB900HP IC: 1846A-XB900HP

FCC ID: MCQ-PS2CTH IC: 1846A-PS2CTH

SAFETY

Safety Identifications



DANGER

Indicates a hazardous situation which, if not avoided, will result in death or serious injury.

Indique une situation dangereuse qui, si elle n'est pas évitée, peut entraîner la mort ou de graves blessures.



WARNING/AVERTISSEMENT

Indicates a hazardous situation which, if not avoided, could result in death or serious injury.

Indique une situation dangereuse qui, si elle n'est pas évitée, peut entraîner la mort ou des blessures graves.



CAUTION/ATTENTION

Indicates a hazardous situation which, if not avoided, could result in minor or moderate injury.

Indique une situation dangereuse qui, si elle n'est pas évitée, peut entraîner des blessures légères à modérées.

NOTICE

Indicates a situation which can cause damage to the equipment, personal property and/or the environment, or cause the equipment to operate improperly.

NOTE: A note is used to inform you of important installation, operation, or maintenance information.

Lockout Procedure

Barricade work area and post safety warnings.

Power supply and control must:

- Be disconnected or locked in OFF position using a lockout device approved by local codes.
 - Have signage that;
 - Clearly states repairs are being made.
 - Identifies person responsible for lockout condition.
- NOTE:** Only this person should be able to remove warnings and lockout device.
- Withstands environmental conditions (weather, wet, and damp, etc.) and remains readable.



General



DANGER

A qualified electrician should install the wiring in accordance with local electrical codes.

Use lockout procedures to prevent death or severe personal injury.

L'installation du câblage doit être effectuée par un électricien qualifié, conformément aux normes électriques nationales et locales.

Afin de réduire le risque de blessures graves ou mortelles, utilisez des procédures de verrouillage.



DANGER

To reduce risk of injury or death, an earth ground connection must be made to the green/yellow controls back panel ground terminal.

If metal conduit is used as the ground connector, a ground bushing and green/yellow wire must be properly attached to the conduit for connection to the ground terminal, per local electrical codes.

Pour réduire le risque de blessure ou de décès, un raccordement à la terre doit être effectué sur la borne de mise à la terre située à l'arrière du panneau de contrôle de couleur verte/jaune.

Si le connecteur de terre utilisé est un conduit métallique, un manchon de mise à la terre et un câble vert/jaune doivent être correctement fixés au conduit un raccordement à la borne de terre, par codes électriques locales.

SAFETY**General** *Continued***! WARNING/AVERTISSEMENT**

STAND CLEAR!
TENEZ-VOUS À L'ÉCART



Rapid moving door could cause serious injury or death.
La porte mobile rapide peut causer des blessures graves ou la mort.

Door could close automatically.

La porte peut se fermer automatiquement.

DO NOT stand in the doorway, and **DO NOT** walk under moving door. Keep door in full view and free of obstructions while operating.

NE PAS rester debout dans la porte et **Ne PAS** marcher sous la porte mobile. Garder la porte en pleine vue et sans obstruction pendant l'opération.

Repairs or adjustments should be made only by a trained door systems technician.

Les réparations ou les ajustements ne doivent être effectués que par un technicien agréé.

! WARNING/AVERTISSEMENT

Cancer and Reproductive Harm

www.P65Warnings.ca.gov

Canver al problèmes du système de reproduction

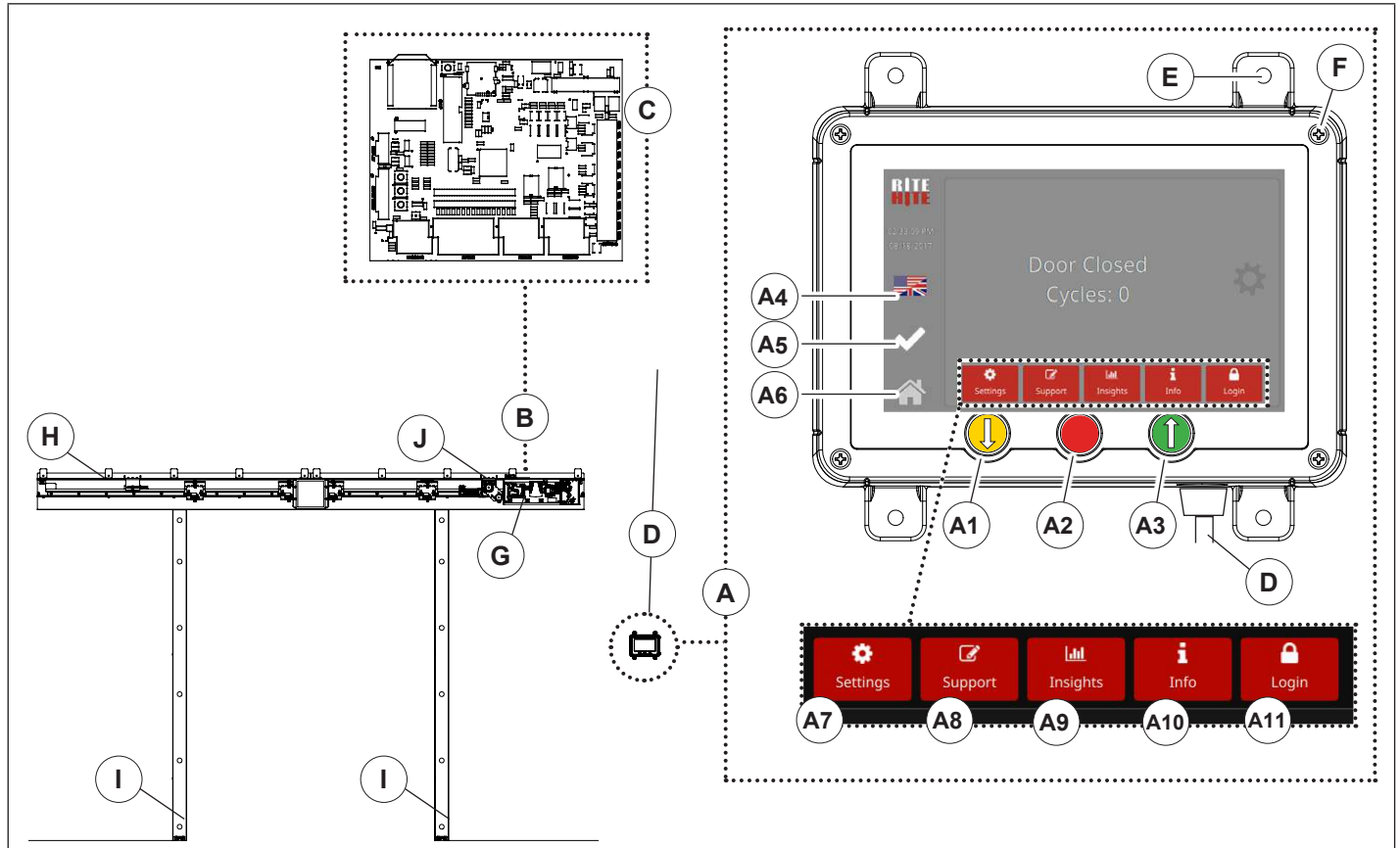
www.P65Warnings.ca.gov

! CAUTION/ATTENTION

During installation and repair, barricade both sides of the door to prevent unauthorized use.

Pendant l'installation et la réparation, délimitez et protégez les deux côtés de la porte pour éviter toute utilisation non autorisée.

COMPONENTS



A. Touch Screen Controls/GUI
(Graphical User Interface)

Buttons:

- A1. Close (Yellow)*
- A2. Stop (Red)*
- A3. Open/Reset (Green)*
- A4. Language indicator
- A5. Door Status:

	Red	Fault
	Yellow	Warning
	White	Operating Normally

- A6. Home
- A7. Settings**
- A8. Support**
- A9. Insights**
- A10. Info**
- A11. Login**

- B. Controls Back Panel
- C. i-COMM 3
- D. Communication Cable
(Can be wired thru the wall or outside the wall.)
- E. Wall Attachment (x4)
- F. Enclosure screw (x4)
- G. Serial Number Label
(Located on the bottom of the shroud.)
- H. Header
- I. Side Jamb
- J. Motor/Gearbox

Shown: Bi-parting door

Not shown: Panels

*Buttons are mirrored on the i-COMM 3 for use during installation.

**Conditional buttons. Shown: Home Screen.

Figure 1

INSTALLATION

Preparation

NOTE: Refer to i-COMM™ 3 Installation/Service manual for GUI/Touchscreen installation.

NOTICE

The GUI/Touchscreen must be located so the door panels do not impact it, when the door is operated.

1. Check for electrical prints included in the parts or control box. They supersede any prints in this manual.
2. Make sure you are working at the correct location and have any required work permits.
3. Inspect installation site to make sure area is free of overhead obstructions (sprinkler pipes, HVAC systems, electrical supply lines, etc.) that might interfere with the lifting of the header assembly during installation.
4. Detour material handling equipment (fork lift trucks, etc.) during the installation of the door.
5. Make sure that the electrician is ready to bring the 120V power (20A service) to the controls back panel.
6. Make sure that the electrical power can be shut off without interfering with other plant operations.
7. Move the entire crate of the door components as close to the door opening as possible.
8. Uncrate carefully. **DO NOT** tear door seals, when removing the panels from the crates.
9. Remove any protective plastic film from components before installing.
10. To verify correct installation, use "**Final Checklist**" on page 15.
11. Install Activation and Optional equipment after verifying door operation.

Required Tools

Fork and Scissors Lift	Cordless Drill
Hydro Level	6 ft (2 m) Carpenter's Level
10 ft (3 m) Step Ladder	25 ft (8 m) Tape Measure
Fish Tape	Square
Utility Knife	Wire Strippers
(2) 9/16 Open End Wrenches	Hammer
(1) 3/8 12 Point Closed End Wrench	(1) 1/8 Allen Wrench
	(1) 5/32 Allen Wrench
(1) 18 mm Open End Wrench	(1) 7/32 Allen Wrench
(1) 19 mm Open End Wrench	(1) 3/16 Allen Wrench
Straight Screwdriver (Small 1/8 in [3 mm] Spade)	
Supplied by others:	
<ul style="list-style-type: none"> • Header and side jamb mounting hardware. • Drill bits for mounting hardware. • Caulk for side jamb and lintel seal. 	

INSTALLATION

Door Jamb

NOTICE

The header is the main support of the door.

All mounting holes in the header must be anchored with 3/8 in mounting fasteners (supplied by others).

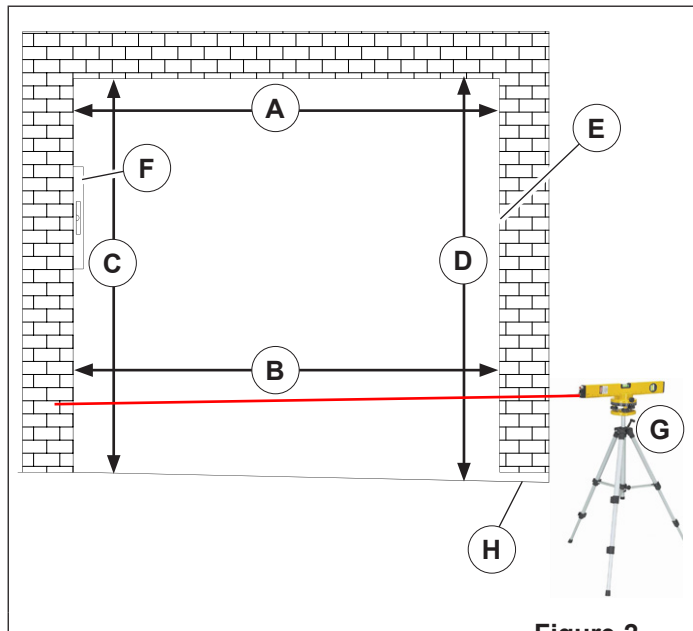


Figure 2

NOTE: For space clearance requirements, refer to architectural drawings (sent with unit) or call your Rite-Hite Representative.

1. Measure door opening width at the top (A), and floor (B).
2. Measure the door opening at left side (C) and right side (D).
3. Dimensions from steps 1-2 should be $\pm 1/2$ in (13 mm) of the dimensions listed on the serial number label.

NOTE: If the measurements do not agree, stop. Contact your Rite-Hite representative.

4. Surface must be flat, smooth and true with opposite side (E).
5. Use a 6 ft (2 m) carpenter's level (F) to make sure that the door jambs and header are plumb and perpendicular.
6. Use a laser level (G) to place a mark where the laser is sighted on each side of the jamb to determine if the floor is level. Measure both sides from floor to the mark. If floor is not level to $\pm 1/4$ in (6 mm), contact Rite-Hite Customer Service.
7. Measure between the jamb at the top of the opening and at the floor and divide this measurement in half and mark the centerline on the wall and on the floor. Drop a plumb bob from the mark at the top of the jamb and place a mark on the floor. The dimension should be within $1/8$ in (3 mm), if not, place a mark half way between these 2 marks.

INSTALLATION

Header/Side Jamb

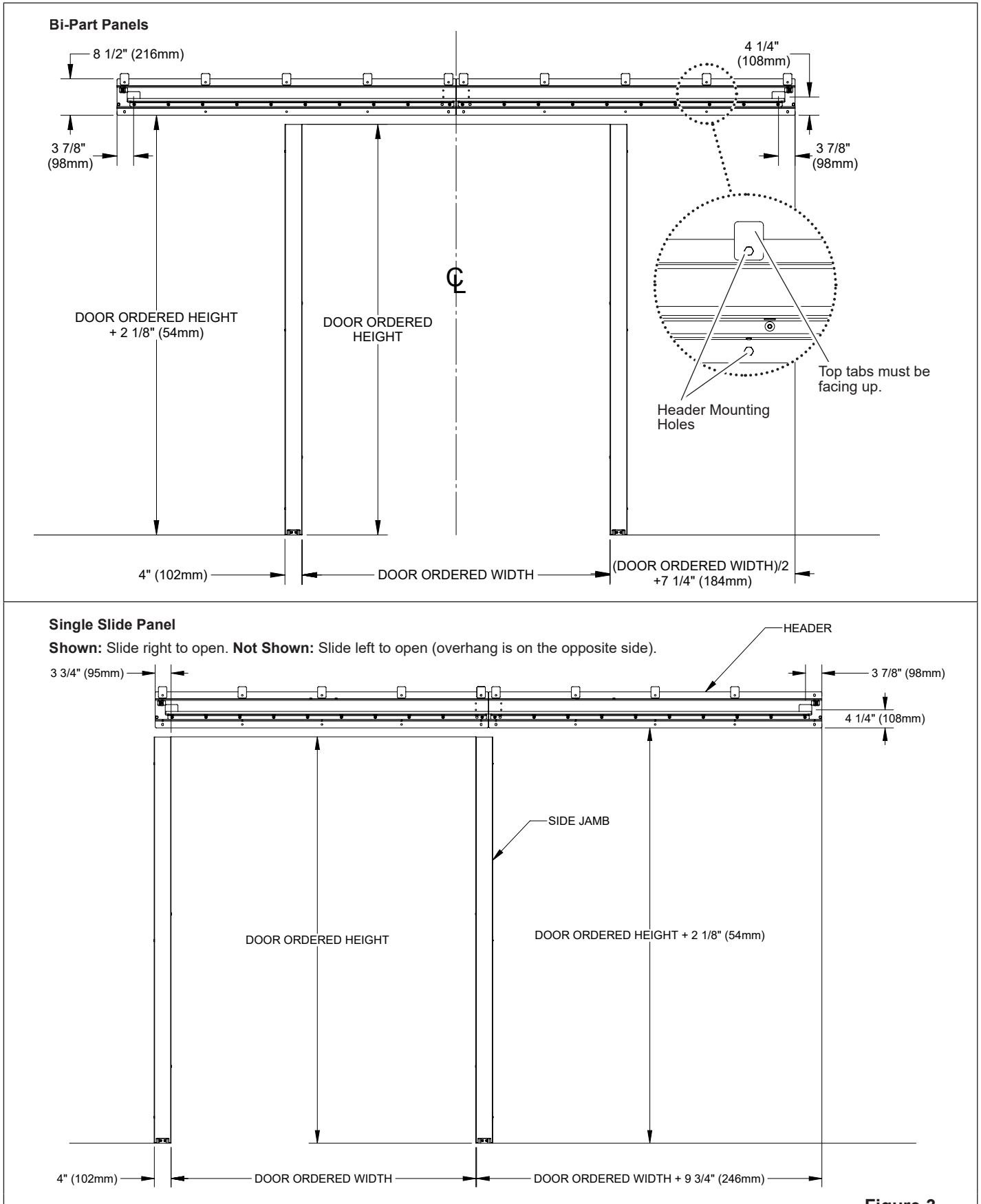


Figure 3

INSTALLATION

Header/Side Jambs *continued*

1. Prepare opening for header and side jamb structure.

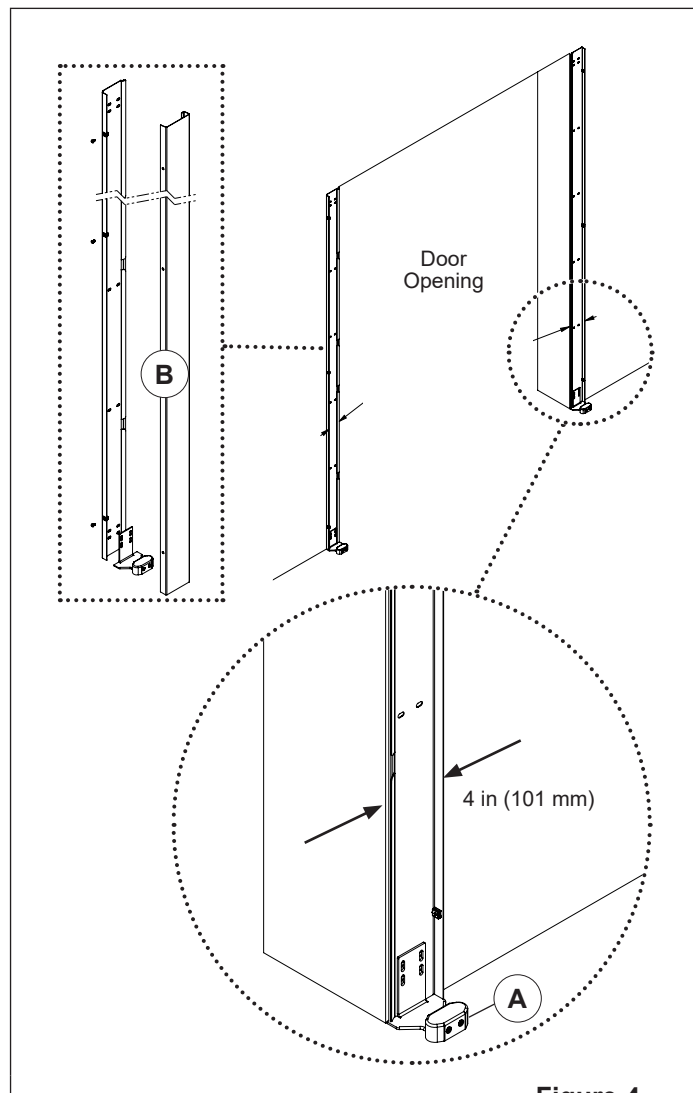


Figure 4

2. Install the side jambs:
 - a. Mount side jambs with 1/4 in fasteners. Keep the outside edge of jamb mount 4 in (101 mm) from opening.
 - b. Install the retention block bracket (A) (inside side jambs). Use (4) 1/4 in fasteners. Photoeyes must face towards the door opening.
 - c. Install the side jamb cover (B).
3. Determine placement of header. Refer to **"Figure 3" on page 8**.
4. Make sure incoming power is positioned correctly. Refer to **"Architectural Drawings" on page 27**.

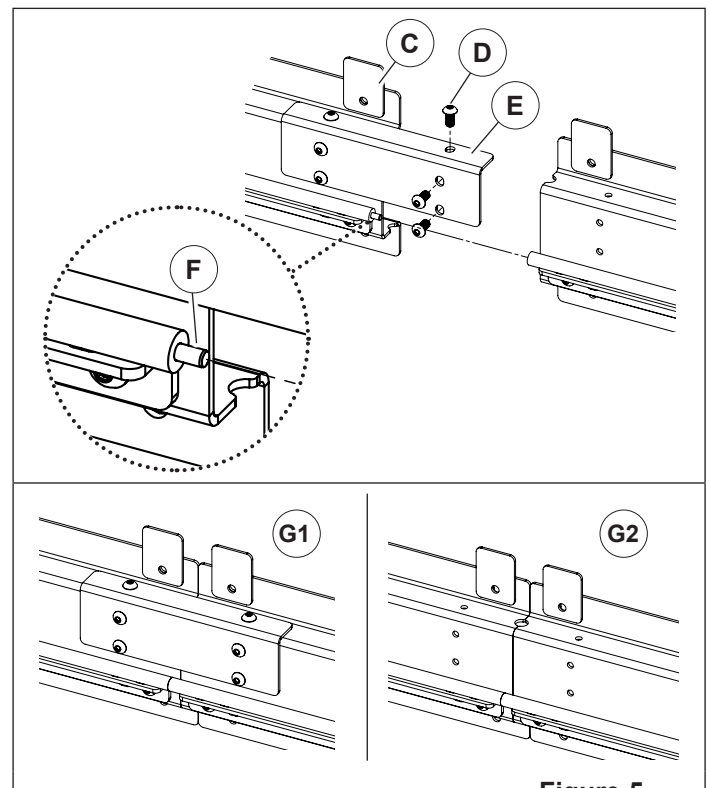


Figure 5

5. Install the header:
 - a. For multi-piece headers, separate the header into pieces. Remove 3 button head screws (D) from each joiner plate (E).
 - b. Lift header or first piece of a multi-piece header into place. Install so bottom of header is Door Ordered Height 2.125 in (54 mm) from floor.
 - c. Top tabs (C) must be placed facing up when installing top mounting fasteners. Secure with fasteners in all mounting holes (**"Figure 3" on page 8**). Use 3/8 in mounting fasteners (supplied by others/10 per channel).
For multi-piece headers:
 - d. Lift the next header piece into place while inserting joining pin (F) into rail.
Temporarily reattach the joiner plate with 3 button head screws (G1).
Repeat 5.c.
 - e. Remove joiner plate(s) and button head screws (G2) after all pieces of a multi-piece header are mounted.
 - f. Repeat 5.c. and 5.d. for any remaining header pieces.

INSTALLATION

Header/Side Jamb *Continued*

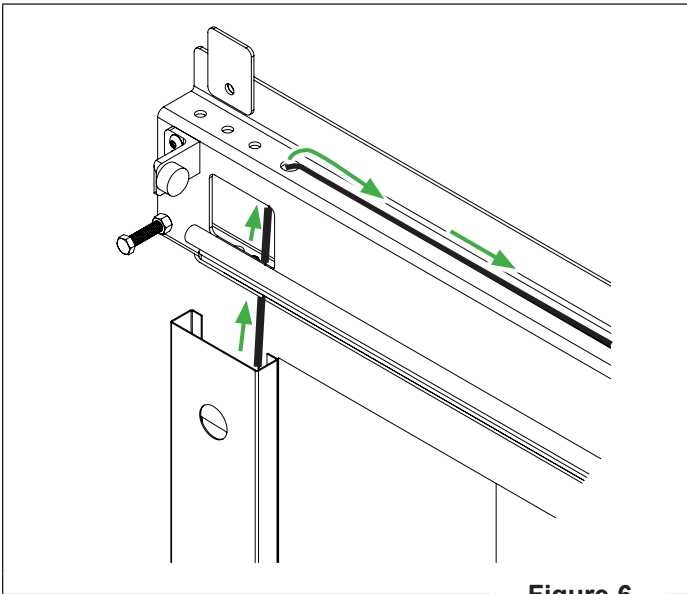
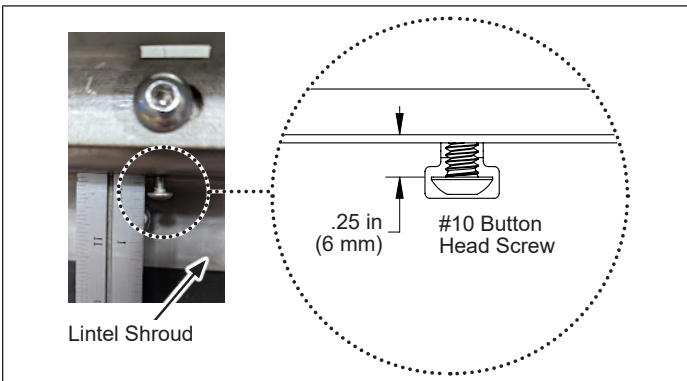


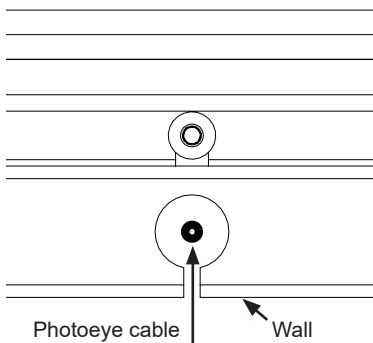
Figure 6

- Route photoeye cable on each side of the door through the holes to the top of header.



Lintel Shroud

Shown: Cross section from bottom of lintel shroud.



Photoeye cable Wall

Figure 7

- Insert screws for bottom cladding into bottom of header. Keep 1/4 in (6 mm) from channel to screw head. Feed photoeye cables through gap in the back of lintel shroud. **DO NOT** allow the cables to be pinched. Slide lintel shroud into position on header. Use a 3/16 in allen wrench to tighten hardware.

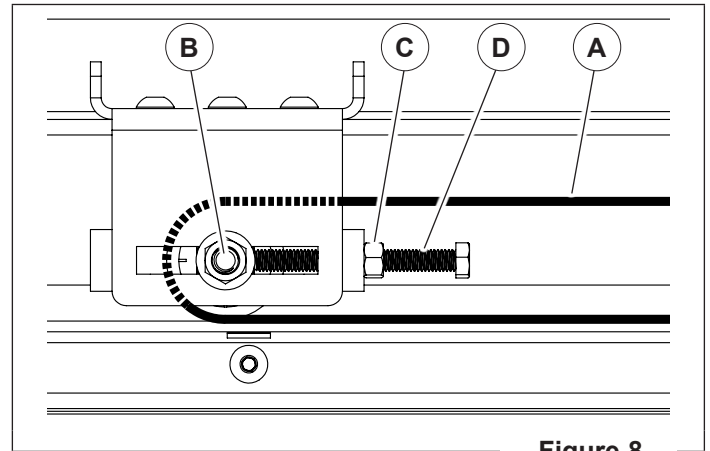
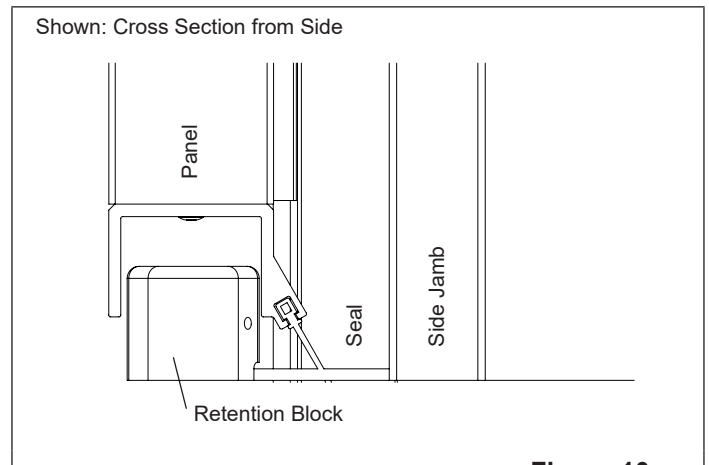
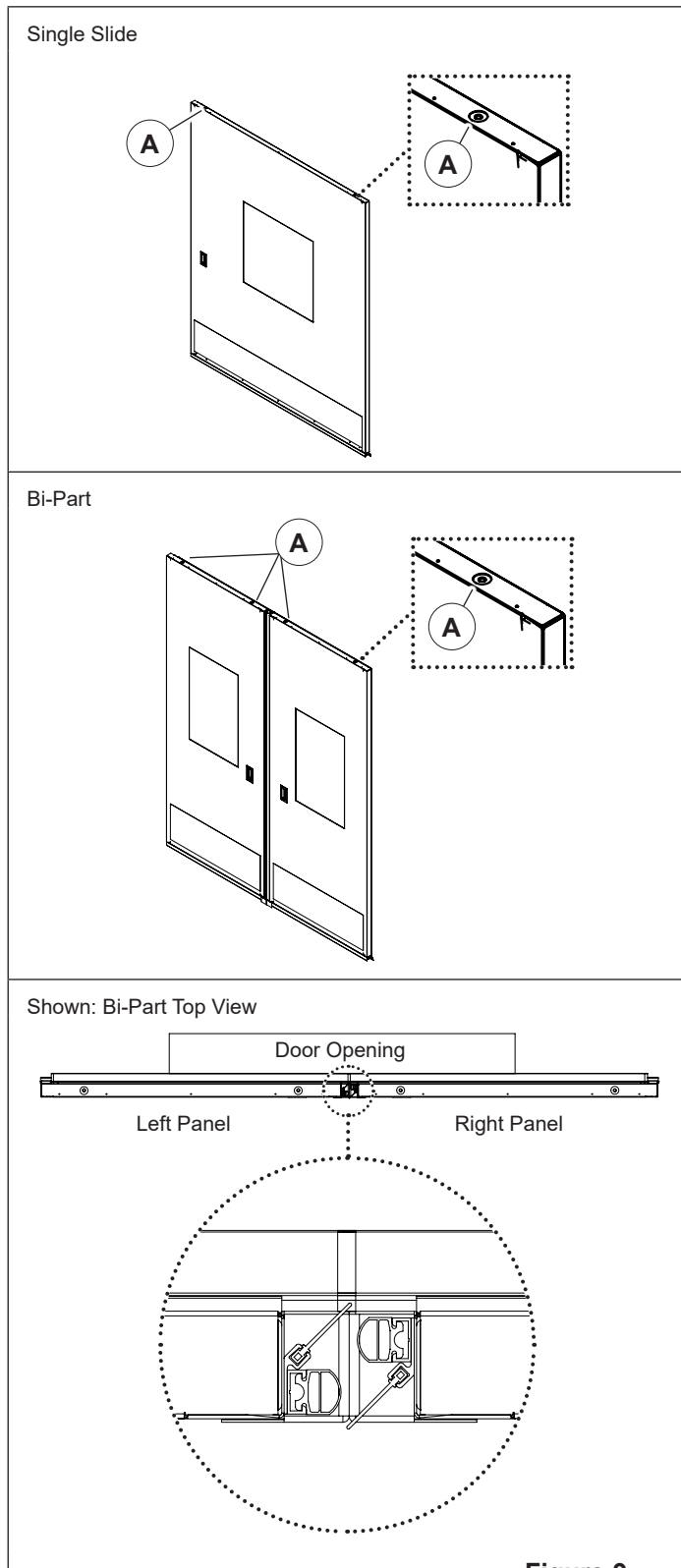


Figure 8

- Wrap belt (A) around drive sprocket and idle pulley.
- Loosen pulley flange nut (B) 1/4 turn and loosen jamb nut (C). Tension belt with tension screw (D). Retighten pulley flange nut and jamb nut

INSTALLATION

Panel(s)



1. Remove all plastic covering from fiberglass and stainless surfaces.
2. Tilt panel so the holes in bottom of trolley line up with holes in top of panel (A). Panel should rest on top of retention block.

INSTALLATION

Adjustments (Panel)

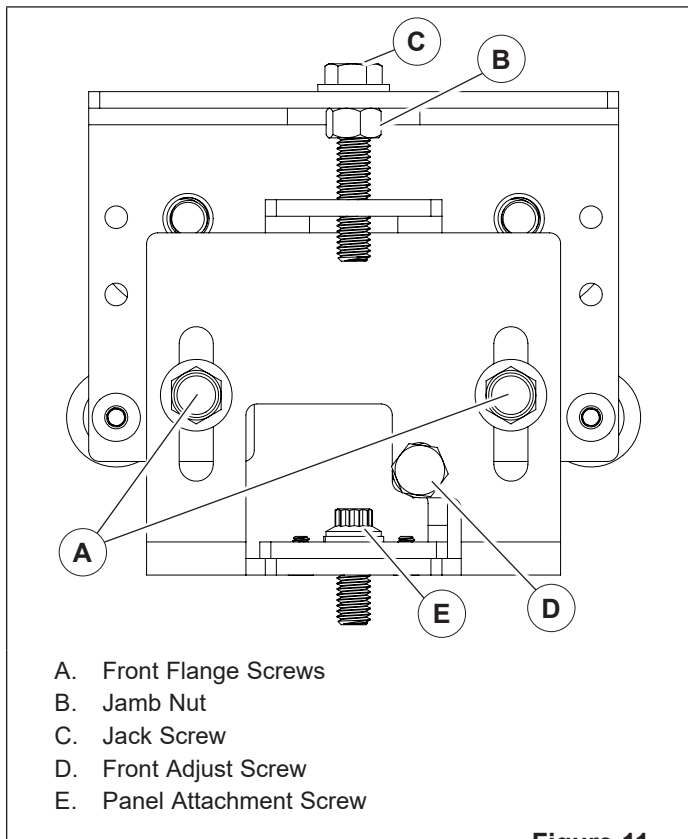


Figure 11

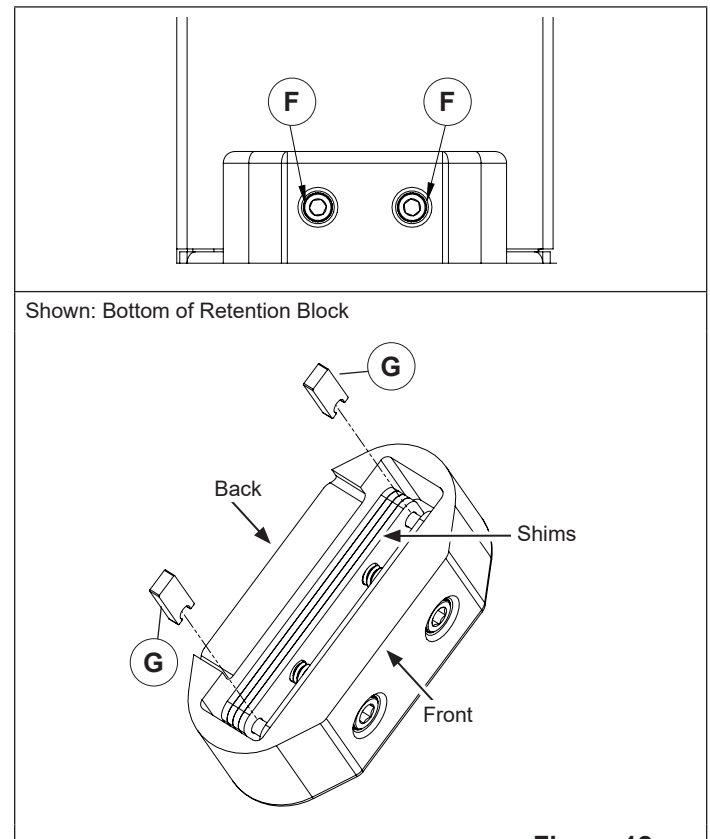


Figure 12

1. Mount panel on trolleys (single 2 trolleys, bi-parting 4 trolleys).
 - a. Loosen front flange screws (A).
 - b. Bring trolley to panel by loosening jamb nut (B) and adjusting jack screw (C).
 - c. Install panel attachment screw (E) and lock washer.
 - d. Adjust height by adjusting jack screw (C).
Adjust panels so the floor seal (J in Figure 9) is compressed no more than a 1/4 in to 3/8 in (6 mm - 10 mm).
 - e. Adjust depth by loosening attachment screw (E) and turning front adjust screw (D).
NOTE: No light should show between the seal and side jamb at the top of the panel.
 - f. When correctly positioned, tighten fasteners to secure the panel.
 - Tighten panel attachment screw.
 - Tighten front flange screws.
 - Tighten jamb nut towards head of jack screw.
2. Adjust the seal at the bottom of the panel. Use the retention blocks at the bottom of the panel.
 - a. Loosen the allen screws (F), and flip the retention block over.
 - b. Remove the spacers (G) and adjust the shims:
 - To move the seal away from the jamb, place more shims towards the front.
 - To move the seal nearer to the jamb, place more shims towards the back.
 - c. Replace spacers and reattach the retention block(s).
NOTE: No light should show between vertical seal and side jamb when retention blocks are adjusted correctly.
3. For bi-part doors, repeat process for the second panel.

INSTALLATION

Electrical



DANGER

A qualified electrician should install the wiring in accordance with local electrical codes.

Use lockout procedures to prevent death or severe personal injury.

L'installation du câblage doit être effectuée par un électricien qualifié, conformément aux normes électriques nationales et locales.

Afin de réduire le risque de blessures graves ou mortelles, utilisez des procédures de verrouillage.



DANGER

To reduce risk of injury or death, an earth ground connection must be made to the green/yellow controls back panel ground terminal.

If metal conduit is used as the ground connector, a ground bushing and green/yellow wire must be properly attached to the conduit for connection to the ground terminal, per local electrical codes.

Pour réduire le risque de blessure ou de décès, un raccordement à la terre doit être effectué sur la borne de mise à la terre située à l'arrière du panneau de contrôle de couleur verte/jaune.

Si le connecteur de terre utilisé est un conduit métallique, un manchon de mise à la terre et un câble vert/jaune doivent être correctement fixés au conduit un raccordement à la borne de terre, par codes électriques locales.

INSTALLATION

Electrical *Continued*

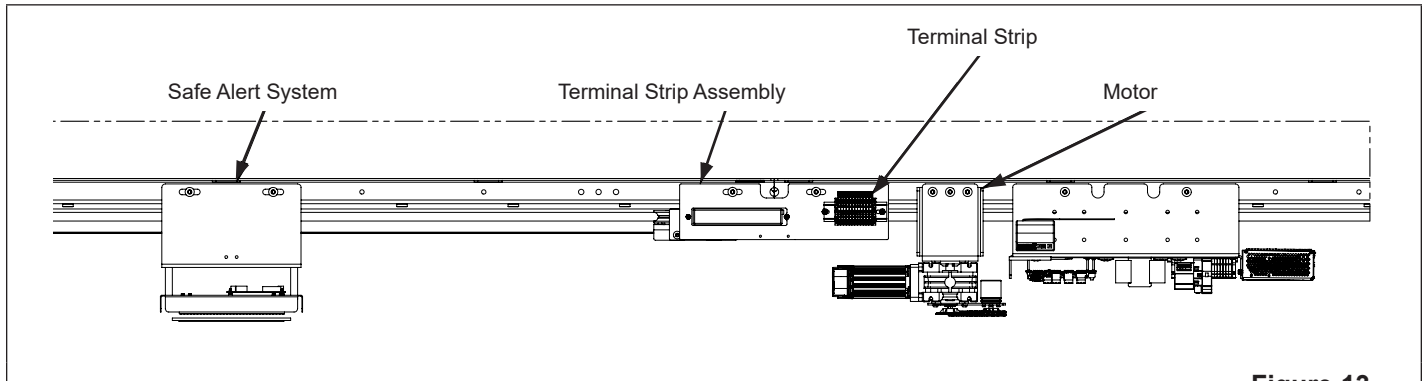


Figure 13

1. Mount terminal strip assembly next to motor and into existing holes. Mount safe alert system centered over opening into existing holes.
2. Wire in power. Connect safe alert system connector, GUI cable, encoder cable, motor cables. Wire photoeyes according to the electrical diagram ("[Field Wiring Diagram](#)" on page 17). Secure cables with adhesive cable mounts and cable ties (supplied) across top of header.
3. Operate the door ("[Common Tasks \(i-COMM 3\)](#)" on page 23) and readjust the panel(s) until the door seals completely ("[Adjustments \(Panel\)](#)" on page 12). After seals are correctly adjusted, redo limit setup to calibrate torque reverse and predictive seal wear notification systems.

NOTE: No light should show between the center of closed bi-part door panels.

Optional Lock

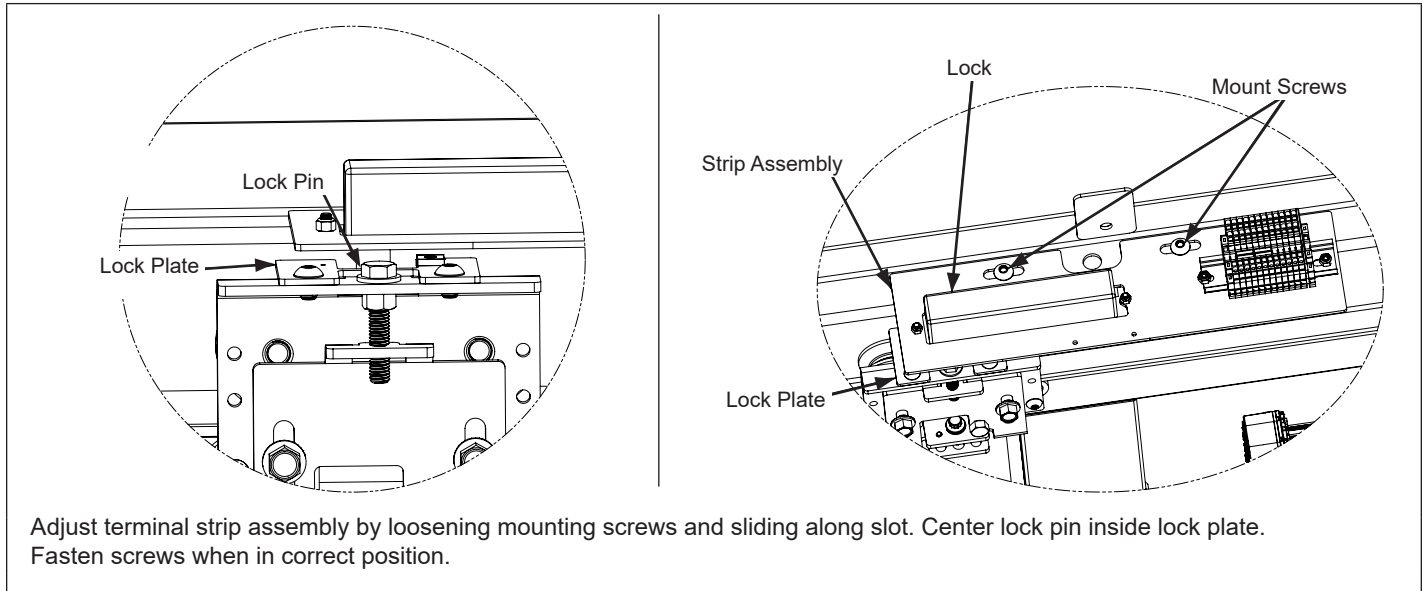


Figure 14

INSTALLATION

Shroud

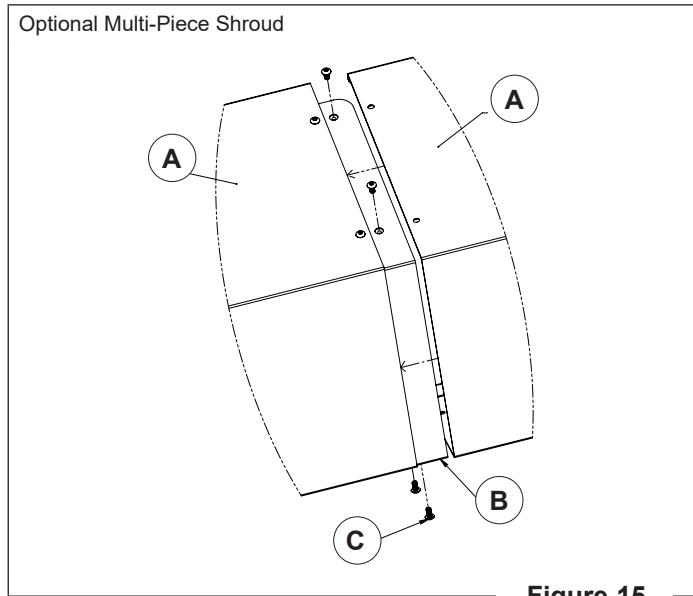


Figure 15

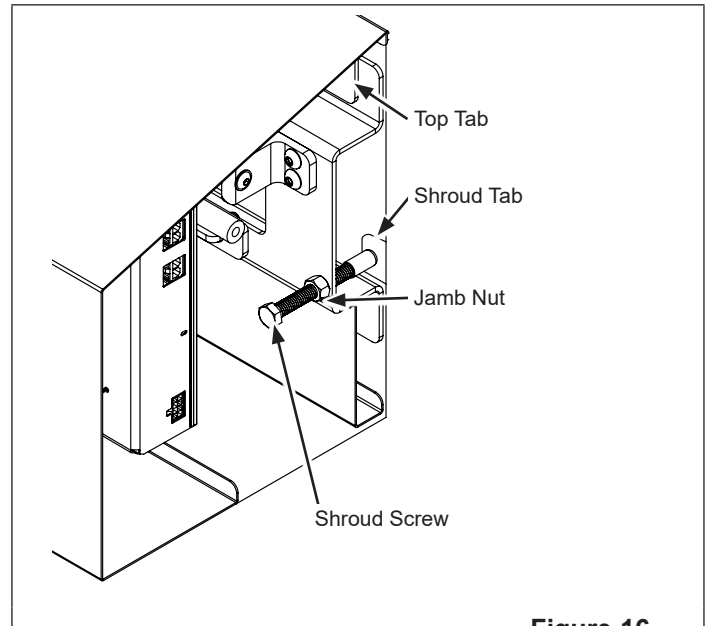


Figure 16

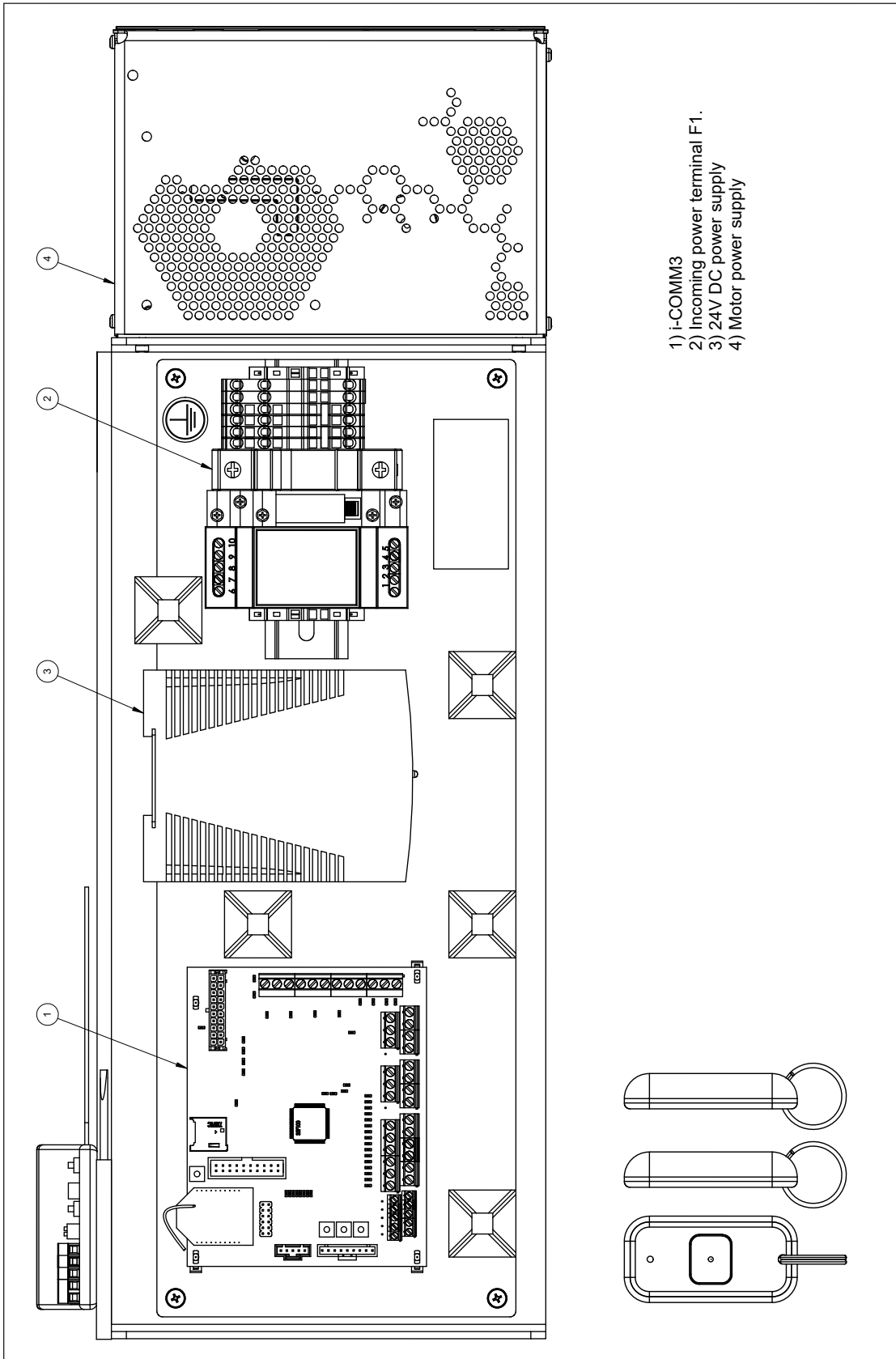
1. Place the back lip of the shroud (single or multi piece) over the top tabs.
2. If installing the optional multi piece shroud:
 - a. Slide the pieces of the shroud (A) together over the splice bracket (B).
 - b. Attach with button head screws (C)
3. Loosen jamb nut, tighten shroud screw against shroud tab, and tighten jamb nut. Repeat for opposite side of shroud.

Final Checklist

#	DESCRIPTION	✓	N/A
1.	Install activation devices and verify operation.		
2.	Default settings are set to auto-reclose. When the "OPEN" button is pressed, the door will open, time out per the setting of the re-close timer on the GUI and close.		
3.	The door can be equipped with several types of activation devices that can open or close the door and can be setup to either auto-reclose or toggle mode.		
4.	For toggle mode, the door can be set-up so if a device is used to open the door, it or another device needs to be reactivated to close the door.		
5.	Ground or shield wires correctly terminated to ground terminal.		
6.	Header channel is fastened to the wall correctly.		
7.	Header shimmed correctly.		
8.	Correct mounting fasteners are used.		
9.	Floor seal compression is 1/4 in - 3/8 in (6 mm - 9 mm) to floor.		
10.	Perimeter seal compression is 1/8 in - 1/4 in (3 mm - 6 mm) to side jamb.		
11.	After seals are correctly adjusted, redo limit setup to calibrate torque reverse and predictive seal wear notification systems.		
12.	Panel mount fasteners tightened.		
13.	Adjust torque reverse threshold sensitivity to make sure minimal force is required. Operate the door for multiple cycles to make sure torque reversals are not occurring.		
14.	"Verify Operation" on page 23.		
15.	Area clean of debris from installation.		

ELECTRICAL

Controls Back Panel



ELECTRICAL

Interlocks, Air Curtains

8
7
6
5
4
3
2
1

D
C
B
A

WIRED INTERLOCKS

NON-SEQUENTIAL 2 DOOR INTERLOCK

RI Door 1 RI Door 2 or other door
 YK01 → X3 (Input)
 YK0N → DC (Input Com)
 DC → YK0N (any output)

2 Door Non-Sequential Interlock
 Note: Consult i-COMM manual to see which inputs can be assigned to interlocks in tandem. Connect YK0 to become interlock in. No other interlocks may be assigned to this input. Terminal must be assigned to interlock through i-COMM. Terminal must be assigned to interlock through i-COMM. RI X3 is to be assigned to function of interlock input, the menu ("Input Function") must be set to a value of "YK0 (RI relay should remain if setting of '0' on both doors).

NON-SEQUENTIAL 3 DOOR INTERLOCK

Door 1 Door 2 Door 3
 DC X3 YK0 YK0N YK1 YK1N YK2 YK2N

3 Door Non-Sequential Interlock
 Only 1 door may be open at a time.

REQUIRED I/O SETTINGS:
 X3 = 0 Interlock In (Must be on to open)
 YK0 = 0 Interlock Out (On when door closed)
 YK1 = 0 Interlock Out (On when door closed)

NON-SEQUENTIAL 4 DOOR INTERLOCK

Door 1 Door 2 Door 3 Door 4
 DC X3 YK0 YK0N YK1 YK1N YK2 YK2N

4 Door Non-Sequential Interlock
 Only 1 door may be open at a time.

REQUIRED I/O SETTINGS:
 X3 = 0 Interlock In (Must be on to open)
 YK0 = 0 Interlock Out (On when door closed)
 YK1 = 0 Interlock Out (On when door closed)
 YK2 = 0 Interlock Out (On when door closed)

AIR CURTAINS

AIR CURTAIN INTERLOCK (24V)

Control Box Air Curtain
 YK0N → Output
 YK0N → Output Com

Note: Consult i-COMM manual for available output functions. Connect YK0 & YK0N to Air Curtain control. YK0 to 120VAC (on when door is closed). YK0N to 120VAC (on when door is closed). Separate relay must be used for isolation with 120VAC.

AIR CURTAIN INTERLOCK (120V)

Relay Air Curtain
 14(0) → Output
 11(4) → Output Com
 A1(5) → DC
 A2(1) → YOC₂

INSTALL RITE-HITE RELAY IN CLOSET
 [A1] [A2] [A3] [A4] [A5] [A6] [A7] [A8] [A9] [A10] [A11] [A12] [A13] [A14] [A15] [A16] [A17] [A18] [A19] [A20]

Note: Consult i-COMM manual for available output functions. Connect relay contact to Air Curtain control. YK0 to 120VAC (on when door is closed). YK0N to 120VAC (on when door is closed). Separate relay must be used for isolation with 120VAC.

WIRELESS INTERLOCKS

NON-SEQUENTIAL 2-16 DOOR INTERLOCK

Non-Sequential Interlock Setup - 2 to 16 doors - Only one door may be open at a time.
 1. Close Door. Press Stop Button.
 2. Navigate to Home->Login->Settings->Network-> Interlock
 3. In Parameters "Door Interlock 0" through "Door Interlock 14" set the line of the doors to interlock with. Leave unused parameters as 0.
 4. Set "Interlock Control Reg." to "Non-Sequential Interlock". Log Out.
 5. Cycle Power to Door.
 6. Repeat steps 1 - 4 at remaining doors
 7. Verify Operation

SEQUENTIAL 2 DOOR INTERLOCK

Sequential Interlock Setup - 2 doors only - Only one door may be open at a time. After door has been activated then closes, it will automatically activate the other door.
 1. Close Door. Press Stop Button.
 2. Navigate to Home->Login->Settings->Network-> Interlock
 3. In Parameters "Door Interlock 0" Enter serial number of the other door to interlock with. Leave unused parameters as 0.
 4. Set "Interlock Control Reg." to "Sequential Interlock". Log Out.
 5. Cycle Power to Door.
 6. Repeat steps 1 - 4 at remaining doors
 7. Verify Operation

AIR CURTAINS

AIR CURTAIN INTERLOCK (24V)

Control Box Air Curtain
 YK0N → Output
 YK0N → Output Com

Note: Consult i-COMM manual for available output functions. Connect YK0 & YK0N to Air Curtain control. YK0 to 120VAC (on when door is closed). YK0N to 120VAC (on when door is closed). Separate relay must be used for isolation with 120VAC.

AIR CURTAIN INTERLOCK (120V)

Relay Air Curtain
 14(0) → Output
 11(4) → Output Com
 A1(5) → DC
 A2(1) → YOC₂

INSTALL RITE-HITE RELAY IN CLOSET
 [A1] [A2] [A3] [A4] [A5] [A6] [A7] [A8] [A9] [A10] [A11] [A12] [A13] [A14] [A15] [A16] [A17] [A18] [A19] [A20]

Note: Consult i-COMM manual for available output functions. Connect relay contact to Air Curtain control. YK0 to 120VAC (on when door is closed). YK0N to 120VAC (on when door is closed). Separate relay must be used for isolation with 120VAC.

D
C
B
A

8
7
6
5
4
3
2
1

NOTES
 Consult i-COMM manual and/or Door manual for additional instructions.
 NOTE: IF THE DOOR HAS EUROPEAN CE SPECIFICATIONS, OUTPUT YK0 IS NOT AVAILABLE FOR WIRED INTERLOCKS. USE OUTPUTS YK1 & YK2 FOR INTERLOCKING. A 4-DOOR WIRED INTERLOCK MAY NOT BE POSSIBLE WITHOUT ADDING A SEPARATE RELAY.

<ISO-120V-I-COMM3_2024_3_13.PDF>

20

Publication: AMEN00419 2024-03-29

OPERATION

CAUTION/ATTENTION

Only travel through a doorway that is completely open.

Ne passer QUE lorsque la porte est complètement ouverte.

NOTICE

DO NOT attempt to drive through a door that is not open when in a fault mode.

Close, Stop, and Open

Refer to "Figure 1" on page 5.

#	OPERATE DOOR:	PRESS BUTTON:
H	Close	Yellow
I	Stop	Red
J	Open/Reset	Green

Optional activation devices (e.g., motion/presence sensors, photoeyes, radio controls, pull cords, push buttons, and floor loops) can be used to open and close the door. Contact your local Rite-Hite representative for specific instructions based on your application.

Security

All parameters are protected by a PIN (Personal Identification Number). Login is required before changing any settings.

NOTE: Default PIN for the user is 3667. PIN can be changed (**Home ▶ Login ▶ Settings ▶ General ▶ Security ▶ User PIN**).

To Login (refer to "Figure 1" on page 5):

1. Press **Home** (L)
2. Press **Login** (Q)
3. Enter PIN
4. Press **Login**

The display will return to the main screen after successful login.

NOTE: The system will log you out automatically based on Logout Time specified (**Settings ▶ Timers ▶ Advanced ▶ Logout Timer**).

OPERATION

Common Locations (i-COMM 3)

LOCATION:	NAVIGATE TO:
Change PIN	Home ► Login ► Settings ► General ► Security ► User PIN
Activation Wiring Help	Home ► Support ► Activation Help (choose screen)
Fault and Change History	Home ► Support ► Logs (choose screen)
Local Representative	Home ► Support ► Local Rep.
Troubleshooting Guides – Faults	Home ► Support ► Fault Help (choose screen)

Common Tasks (i-COMM 3)

TASK	NAVIGATE TO:	
Door Setup (Installation)	Home ► Login ► Settings ► Setup Wizards ► Door	Quickly setup: <ul style="list-style-type: none"> • Region Settings (Time, Date, Etc.). • Door Limits (Encoder).
Limit (Encoder) Setup	Reset All Limits	Home ► Login ► Settings ► Limits ► Limit Setup Follow all on-screen prompts.
	Adjust Open Limit	Home ► Login ► Settings ► Limits ► Open Position Adj. To adjust the limit so the door opens: <ul style="list-style-type: none"> • Further, enter a positive value. • Less, enter a negative value.
	Adjust Close Limit	Home ► Login ► Settings ► Limits ► Close Position Adj. To adjust the limit so the door closes: <ul style="list-style-type: none"> • Further, enter a negative value. • Less, enter a positive value.
	Door Closing Timers	Home ► Login ► Settings ► Timers Total open time is the sum of Close Timer and Pre-announce to Close Timers. or Total open time = Close Timer + Pre-announce to Close Timers.
Reset Maintenance	Home ► Login ► Settings ► General ► Reset Maintenance	
Network Setup	Wired	Home ► Settings ► Setup Wizards ► Network
	Wireless	Home ► Settings ► Setup Wizards ► Network Home ► Settings ► Setup Wizards ► Wi-Fi Install USB wireless module.

Verify Operation

The door operations are controlled by an i-COMM 3 and GUI. The controller is set-up and programmed during testing at the factory. Only Rite-Hite authorized service technicians should change the programming.

- To quickly determine if the door is ready to operate:
 - Remove Shroud.
 - Look at the row of ("X...") green Input LEDs on the i-COMM 3 and the label to make sure of correct state.
- Secure all loose wires away from moving parts.
- With the power on, press the "OPEN" button. The door should open and close automatically after a short delay. To adjust the amount of door open time, the setting must be changed in the touchscreen/GUI.
- Operate and observe the door opening to make sure that it fully opens. Observe the closing action to make sure that the door operates smoothly and fully closes.

If it is necessary to adjust Open or Close positions, refer to i-COMM 3 manual.

- With the end user material handling equipment:
 - Approach door slowly and make sure that all the activation devices that are being used are operating correctly. **DO NOT** attempt to drive through a door that is in a fault.
 - Use caution (honk horn) and look in all directions when approaching a door that is closing and make sure that the door will reverse before proceeding.

MAINTENANCE

Planned Maintenance

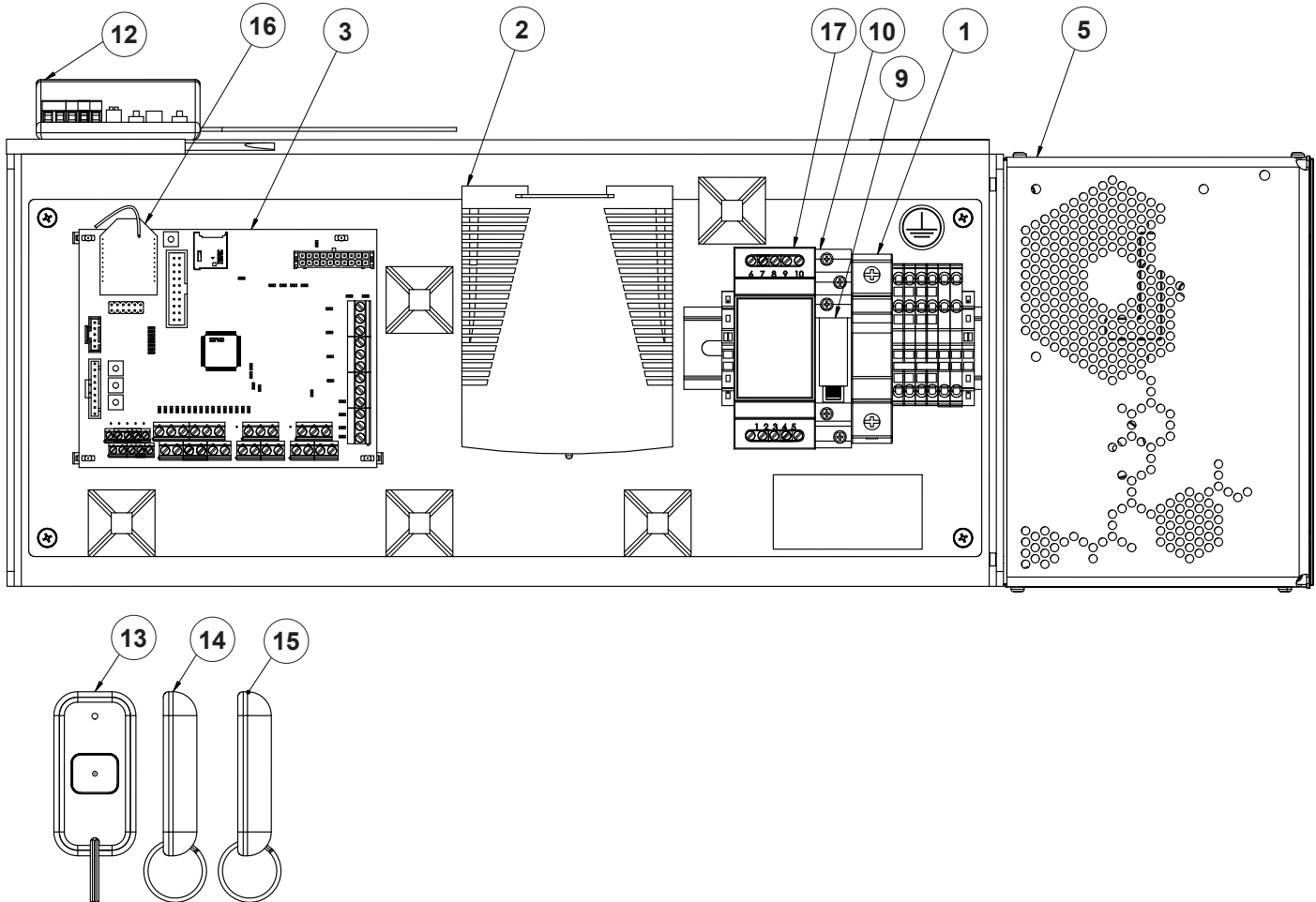
CUSTOMER:		SALES ORDER #:							SERIAL #:	DATE:
TASK	RECOMMENDED P.M. IN MONTHS								INSPECT AND PERFORM THE FOLLOWING:	
	1	4	8	12	18	24	30	36		
Verify Operation	✓	✓	✓	✓	✓	✓	✓	✓	Refer to "Verify Operation" on page 23.	
Door Fasteners	-	✓	-	✓	-	✓	-	✓	Perform visual inspection, check for correct width dimension and tighten all bolts.	
Drive Belt	-	✓	-	✓	-	✓	-	✓	Check tension and wear.	
Gearbox	-	✓	-	✓	-	✓	-	✓	Check lube, add if required.	
Encoder	-	✓	-	✓	-	✓	-	✓	Check open and close positions.	
Panel	-	✓	-	✓	-	✓	-	✓	Check for damage. Make sure all panel fasteners and trolley hardware are tight.	
Panel Nose and Floor Seals	-	✓	-	✓	-	✓	-	✓	Check for correct sealing, and tears and repair.	
Panel Retention System	-	✓	-	✓	-	✓	-	✓	Make sure retention system is functional. Panel seals must be tight to the side jambs, lintel shroud, and floor with no air leaks.	
Torque Reversing	-	✓	✓	✓	✓	✓	✓	✓	Check that door reverses with obstruction while closing, and stops with obstruction while opening.	
Trolley Rollers	-	✓	-	✓	-	✓	-	✓	Inspect for wear or binding.	

TROUBLESHOOTING

DEFINITION	FUNCTION
Activation Devices	Make sure all devices fully opens and closes the door after the re-close timer has expired. If you have wired the devices in toggle mode, operate the device twice to make sure that the door will open and close with an activation. All activation devices use a set of normally open contacts, refer to " Activation Wiring Diagram " on page 19 .
Controls Back Panel	The controls are an open industrial control panel. The panel is fused and operates on 120V single phase.
Door Operation and Controls	The door operations are controlled by an i-COMM 3 Universal Controller. The i-COMM 3 is set up and programmed during testing at the factory. Unless you are a Rite-Hite authorized service technician, you should not attempt to change the factory set program. A quick way of determining that the door is ready to operate normally is to access the i-COMM3 and look for the green LED lights to be ON at the X inputs and the Y outputs. Refer to the Input/Output logic table located in the i-COMM 3 manual. If the door fails to function, contact your local representative.
Reverse Motor Direction	If motor direction is reversed, use the GUI. Navigate to Settings ► Limits ► Motor Direction .
Encoder	DO NOT splice or extend the encoder cable. a. If door is not stopping at the same position, make sure encoder cable is grounded. b. Make sure encoder chain is operating correctly and sprocket set screws are tight to shafts.
F1	F1 Fuse is for incoming power and protects the power supply, motor, and i-COMM 3. Refer to electrical wiring diagram for fuse sizes.
Panel Seal	Provides a seal between the panel, the floor, and the opening. Replace if necessary.
Graphic User Interface	A digital display that shows the cycles, status and position of the door at any time during its travel. For input and output function signals, refer to the i-COMM 3 manual. Settings can be changed for re-close or pre-announce timers, interlocks, special activation commands, among many others. Refer to instructional manual for details.
i-COMM 3 Controller	The i-COMM 3 controller is a circuit board that controls the actions of the door.
Motor	Motor is a DC servo. The status LED is green when enabled and orange when disabled.
Motor will not run	Make sure connections on motor are secure. Make sure Teknic Drive Enable output is correctly connected.
Panel	The panel is a 1.75 in (44 mm) fiberglass reinforced panel. Check panel seals for any tears and replace if necessary.
Panel Retention System	The panels are held against the side jambs by a retention block mounted at the bottom.
Panel Reversing System	When the panel(s) impact an object in the opening, the door will reverse and open. Set to not damage any product or personnel in the opening.
Power Supply	Powered by 120VAC from the F1 fuse and converts to 24VDC to the i-COMM 3.
Teknic Power Supply	Powered by 120VAC from F1 fuse and converts to 75VDC for motor.
Relay CR3	Single pole 24VDC relay is required when the pre-announce option is chosen.
Trolley	To remove trolleys or replace rollers it is necessary to remove the bottom orange rollers.

PARTS

Controls Back Panel

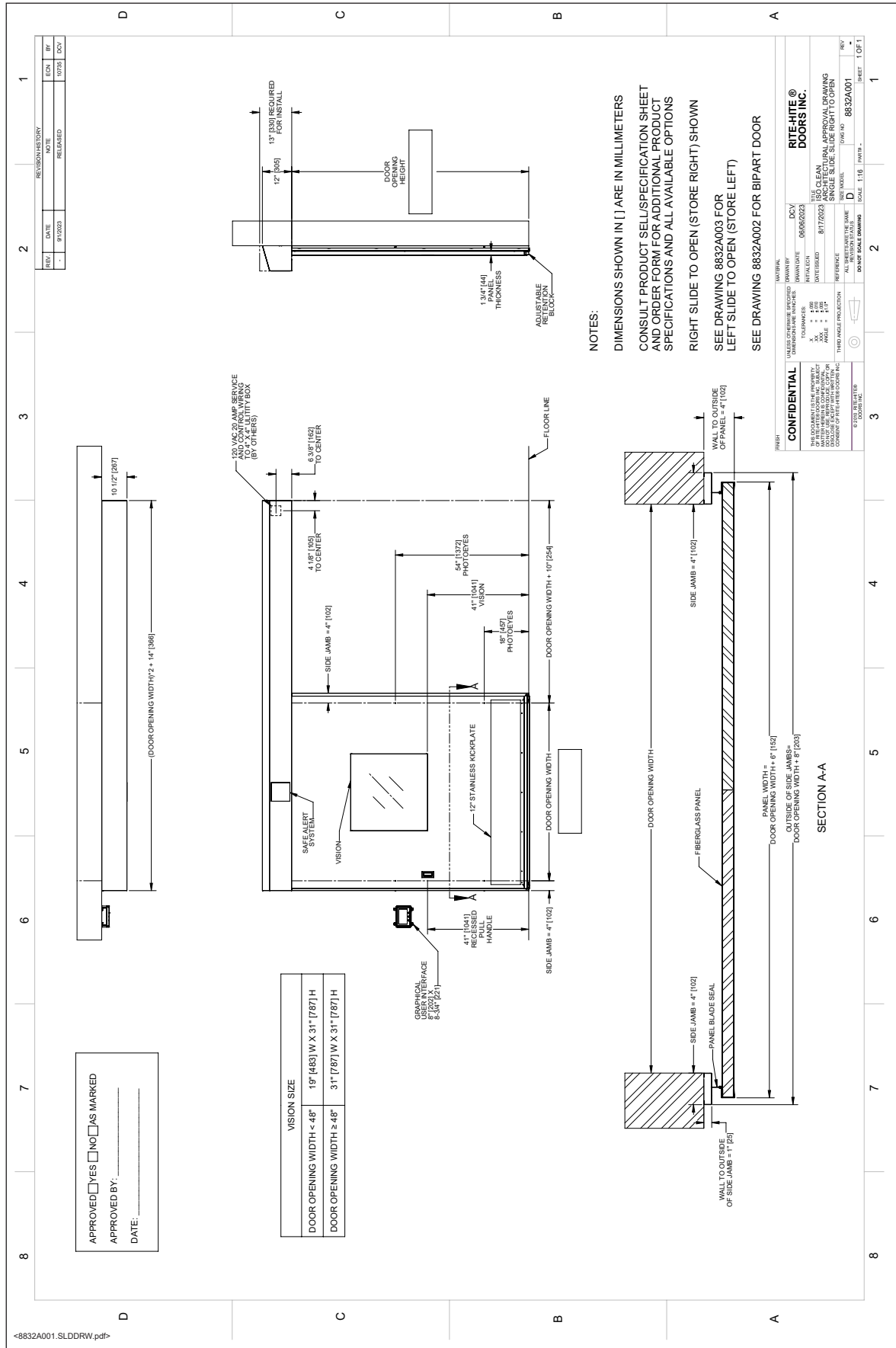


#	QTY	DESCRIPTION	PART #
1	1	FUSE, 15AMP, 600V, KLDR	51000051
2*	1	POWER SUPPLY, DIN, 24VDC, 60W, CG	65700012
3	1	KIT, I-COMM3 REPLACEMENT	53701043
4*	1	HARN, WIRE KIT, ICOMM3, ISO	52000080
5	1	POWER SUPPLY, IPC-5, TEKNIC	65700023
6*	1	CBL, CNTRL, 10FT, CLEARPATH	15650397
7*	1	CBL, DC, IPC35, 10FT, CLEARPATH	15650398
8*	1	CBL, AC, IPC35, CLEARPATH	15650399
9	1	RLY, SPDT, 24VDC, 10AMP	66450014
10	1	SCKT, RLY, 1POLE, 250VAC, 10AMP	70350002
—	1	KIT, WARNING DEVICE RELAY, I-COMM (Includes #9 and #10.)	53700862
12	1	RCVR, BEA, 433, 12-24V, 1FN	66250020
13	1	TRANS, BEA, 433, 1BTN	73750078
14	1	TRANS, BEA, 433, 2BTN	73750079
15	1	TRANS, BEA, 433, 3BTN	73750080
16	1	PCB, RADIO, XBEE, 900MHZ, WR ANT	55150355
17	1	CONTROLLER, WIRELESS, ACTIVATION, BTR, 12-24V	17500025

*Not Shown

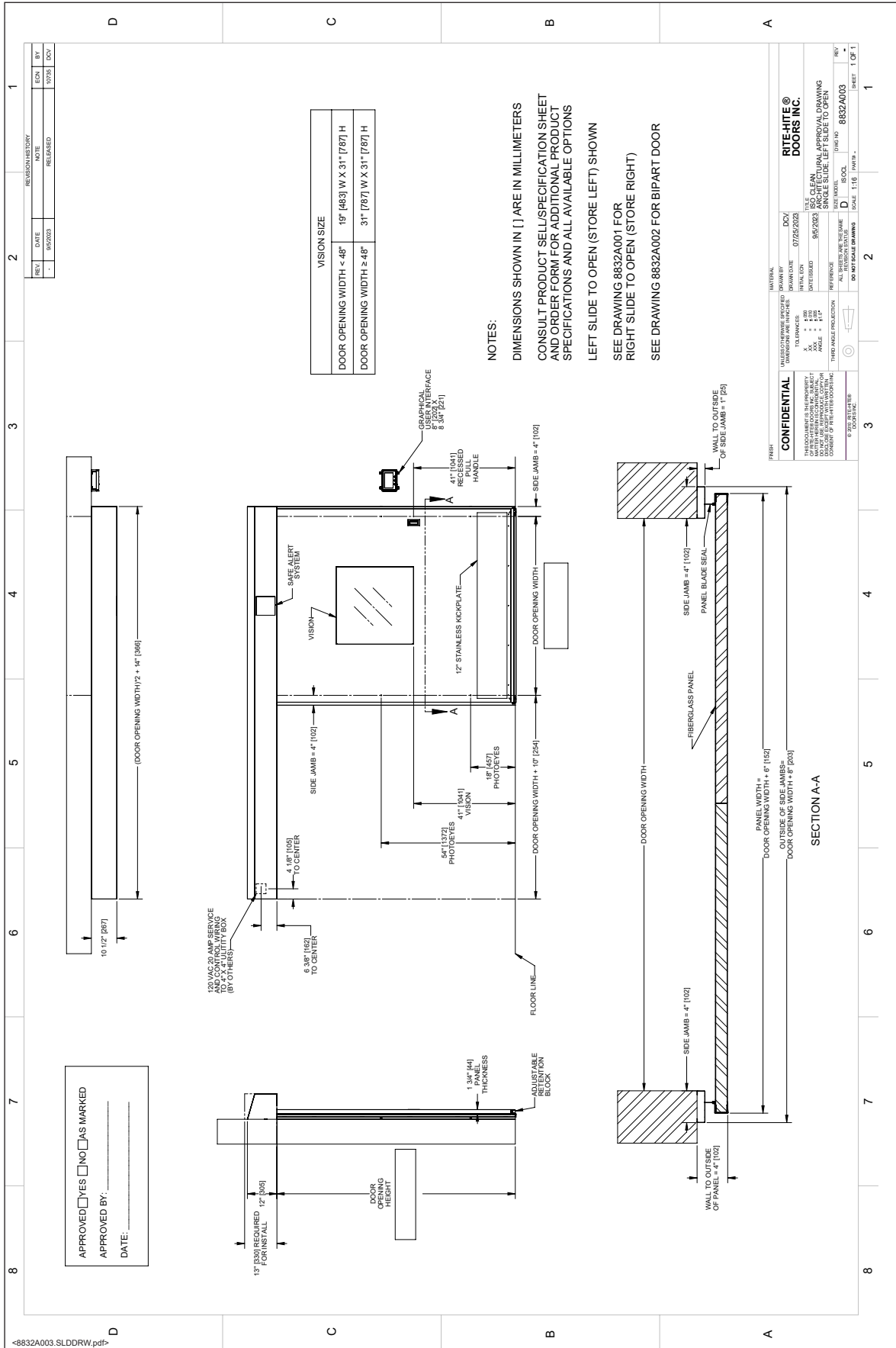
ARCHITECTURAL DRAWINGS

Single Slide Door – Slide Right to Open



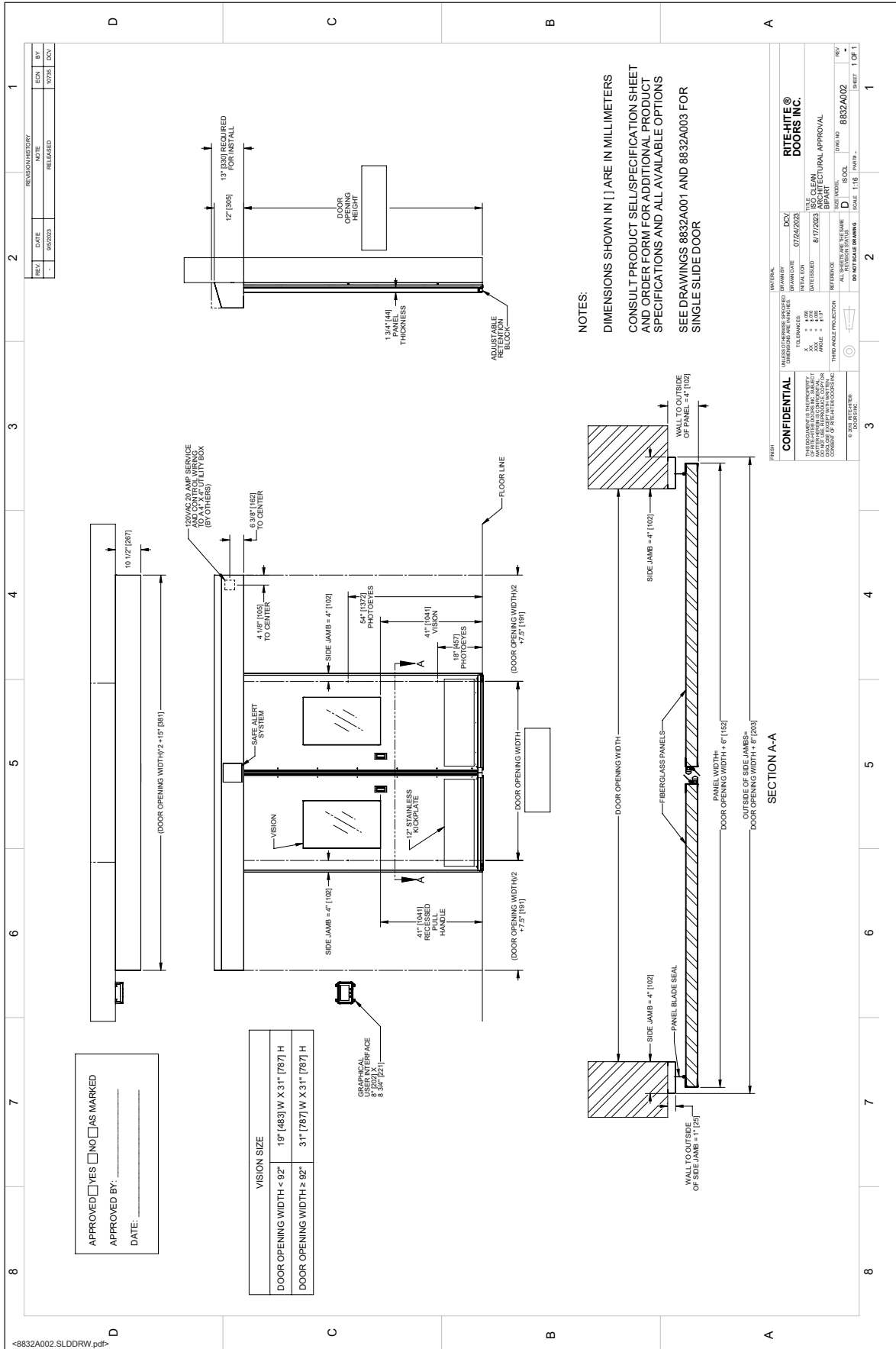
ARCHITECTURAL DRAWINGS

Single Slide Door – Slide Left to Open



ARCHITECTURAL DRAWINGS

Bi-Part Door



ABBREVIATIONS

ABBREVIATION	DESCRIPTION
AB	Allen Bradley
AC	Alternate Current
ACT	Activation
Amp	Amperage
A/R	As Required
Ass'y	Assembly
BL or BLK	Black
BRD/DRN	Braid or Drain Wire
BRGLD	Barrier Glider
BR or BRN	Brown
BRKT	Bracket
BRK	Brake
BTM	Bottom
BU	Blue
CC	Current Limiting
CE	European Commission
CL	Center Line
CL	Clean Door
CLR	Cooler Door
CR	Control Relay
CT	Control Techniques
C.W.	Counter Weight
CUI	Compact User Interface
DC	Direct Current
D.O.H.	Door Opening Height
D.O.W.	Door Opening Width
DR	Drill
E-Stop	Emergency Stop
Ext	Exterior
Ext/Ext	Exterior/Exterior
FHMS	Flat Head Machine Screw
F1,2,3	Fuse 1,2,3
FCC	Federal Communications Commission
FHWH	Flat Head Washer Head
FR/FZR	Freezer Door
FSTX	FasTrax
GBX	Gearbox
GN or GRN	Green
GND	Ground
GR	Grade
GY	Gray
HDW	Hardware
HHCS	Hex Head Cap Screw
HHMS	Hex Head Machine Screw
HWHMS	Hex Washer Head Sheet Metal Screw
H.P.	Horse Power

ABBREVIATION	DESCRIPTION
Hz	Hertz
illum	Illumination
ID	Inside Diameter
in	Inches
ind	Induction
Int	Interior
Int/Int	Interior/Interior
Int/Ext	Interior/Exterior
INV	Inverter
I/O	Input/Output
J-Box	Junction Box
KBPS	Kilobytes per second
KLDR	Time Delay Fuse
KVA	Kilo-Volt Ampere
L	Left
lb	Pounds
LCD	Liquid Crystal Display
LED	Light-Emitting Diode
LH	Left Hand
LHD	Left Hand Drive
L1,2,3	Line Voltage 1, 2, 3
LLC	Limited Liability Company
LTSPD	LiteSpeed
L/S	Limit Switch
M/D/Y	Month/Day/Year
Max	Maximum
MCR	Motor Contactor
Mhz	Mega Hertz
Mil/mm	Millimeters
Min	Minimum
Misc	Miscellaneous
MPH	Miles per hour
MSDC	Mounted Side DC
MSTP	Mounted Side Tie Point
N	Neutral
NMDC	Non-Mounted Side DC
NMTP	Non-Mounted Side Tie Point
N/A	Not Available
N.C.	Normally Closed
N.O.	Normally Open
N.P.O.	Non-Powered Opening
OB	Obstruction
OD	Outside Diameter
O.D.H.	Ordered Door Height
O.D.W.	Ordered Door Width
Opt	Optional

ABBREVIATIONS

ABBREVIATION	DESCRIPTION
OR or ORG	Orange
Oz	Ounce
PCB	Printed Circuit Board
PB	Push Button
PE	Photoeye
Pharma	Pharmaceutical
PHLP	Phillips Head
PHSMS	Pan Head Sheet Metal Screw
PK	Pink
P.M.P.	Planned Maintenance Program
Pos	Position
PSA	Pressure Sensitive Adhesive
PTR	Perimeter Seal
PVC	Polyvinyl Chloride
Qty	Quantity
R	Right
RD	Red
RH	Right Hand
RHD	Right Hand Drive
RHMS	Round Head Machine Screw
R/T	Roller Tube
SD	Secure Digital
SEC	Seconds
SF	Square Foot
SK	Control Techniques VFD
SPDT	Single Pole Double Throw
SPLT	SplitSecond
S.S./STNLS	Stainless Steel
STND/STD	Standard
SW	Switch (Disconnect)
Term	Terminal
TIG	Tungsten Insert Gas
UHMW	Ultra High Molecular Weight Polyethylene
UV	Ultra Violet
V	Voltage
VFD	Variable Frequency Drive
VL	Vertical Lift
V.V.	Virtual Vision
W.D.	Warning Device
w/	With
w/o	Without
WH	White
X	Controller Input
XFMR	Transformer
XL	Extra Large Door
Y	Controller Output

ABBREVIATION	DESCRIPTION
YE	Yellow
ZNC	Zinc
0V	Direct Current Common (Zero V)

2023-04-15

Rite-Hite Company, LLC and its affiliates (collectively "Rite-Hite") warrant that the Product sold to the Owner will be free of defects in design, materials and workmanship (ordinary wear and tear excepted) for the periods set forth below ("Limited Warranty").

- Two (2) Year(s) on all mechanical and electrical parts (non-prorated).
- One (1) Year(s) labor, based on Rite-Hite approved travel and labor repair times.
- One (1) Year(s) for motor and gearbox material failure only.
- Additional One (1) Year(s) parts and labor warranty with purchase of Rite Hite Extended Warranty.

REMEDIES

Parts: Rite-Hite's obligations under this Limited Warranty are limited to repairing or replacing, at Rite-Hite's option, any part which is determined by Rite-Hite to be defective during the applicable warranty period. Such repair or replacement shall be Rite-Hite's sole obligation and the Owner's exclusive remedy under this Limited Warranty.

Labor: Rite-Hite will provide warranty service without charge for labor per the specified warranty period. Thereafter, a charge will apply to any repair or replacement under this Limited Warranty.

CLAIMS Claims under this Limited Warranty must be made (i) within 30 (thirty) days after discovery and (ii) prior to expiration of the applicable warranty period. Warranty period commences on the date of shipment. Claims shall be made in writing or by contacting the representative from whom the Product was purchased directly. Owner must allow Rite-Hite or its agent, a reasonable opportunity to inspect any Product claimed to be defective and shall, at Rite-Hite's option, either (x) grant Rite-Hite or its agent access to Owner's premises for the purpose of repairing or replacing the Product or (y) return of the Product to the Rite-Hite, F.O.B. Rite-Hite's factory.

NOT WARRANTED Rite-Hite does not warrant against and is not responsible for wear items such as fuses, batteries, bulbs, vision and seals. No implied warranty shall be deemed to cover damages that result directly or indirectly from: (i) the unauthorized modification or repair of the Product, (ii) damage due to misuse, neglect, accident, failure to provide necessary maintenance, or normal wear and tear of the Product, (iii) failure to follow Rite-Hite's instructions for installation, failure to operate the Product within the Product's rated capacities and/or specified design parameters, or failure to properly maintain the Product, (iv) use of the Product in a manner that is inconsistent with Rite-Hite's guidelines or local building codes, (v) movement, settling, distortion, or collapse of the ground, or of improvements to which the Products are affixed, (vi) fire, flood, earthquake, elements of nature or acts of God, riots, civil disorder, war, or any other cause beyond the reasonable control of Rite-Hite, (vii) improper handling, storage, abuse, or neglect of the Product by Owner or by any third party.

DISCLAIMERS THIS LIMITED WARRANTY IS EXCLUSIVE AND IN LIEU OF ALL OTHER REPRESENTATIONS AND WARRANTIES, EXPRESS OR IMPLIED, AND RITE-HITE EXPRESSLY DISCLAIMS AND EXCLUDES ANY IMPLIED WARRANTIES OF MERCHANTABILITY OR FITNESS FOR PURPOSE. RITE-HITE SHALL NOT BE SUBJECT TO ANY OTHER OBLIGATIONS OR LIABILITIES, WHETHER ARISING OUT OF BREACH OF CONTRACT, WARRANTY, TORT (INCLUDING NEGLIGENCE AND STRICT LIABILITY) OR OTHER THEORIES OF LAW, WITH RESPECT TO THE PRODUCTS SOLD OR SERVICES RENDERED BY RITE-HITE, OR ANY UNDERTAKINGS, ACTS, OR OMISSIONS RELATING THERETO.

LIMITATION OF LIABILITY IN NO EVENT SHALL RITE-HITE BE RESPONSIBLE FOR, OR LIABLE TO ANYONE FOR, SPECIAL, INDIRECT, COLLATERAL, PUNITIVE, INCIDENTAL, OR CONSEQUENTIAL DAMAGES, EVEN IF RITE-HITE HAS BEEN ADVISED OF THE POSSIBILITY OF SUCH DAMAGES. Such excluded damages include, but are not limited to, personal injury, damage to property, loss of goodwill, loss of profits, loss of use, cost of cover with any substitute product, interruption of business, or other similar indirect financial loss.

170714

GLOBAL SALES AND SERVICE *Representatives in All Major Cities***RITE-HITE WORLD HEADQUARTERS**

195 S. Rite-Hite Way
Milwaukee, WI 53204-1195
USA

☎ **414-355-2600**
USA Only: **1-800-456-0600**

RITE-HITE CHINA

First Floor, Building #3,
558 Tongxie Road,
Changning District
Shanghai 200335, China

☎ **+86-21-6237-6333**

RITE-HITE LATIN AMERICA

Alameda Lorena 800, conj. 1310
- Jardim Paulista
São Paulo-SP, CEP 01424-001
- Brazil

☎ **+55-11-3527-9590**

RITE-HITE GMBH

Carl-Zeiss-Strasse 3
34471 Volkmarsen, Germany

☎ **+49-5693 98700**