

NEXT ASSEMBLY	FINAL ASSEMBLY

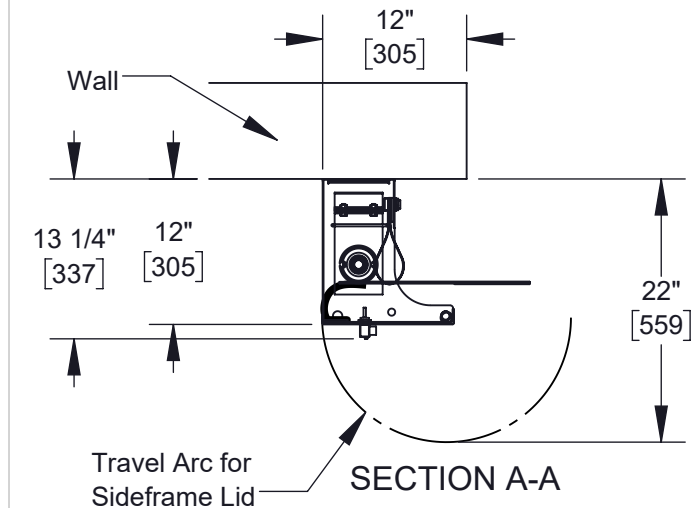
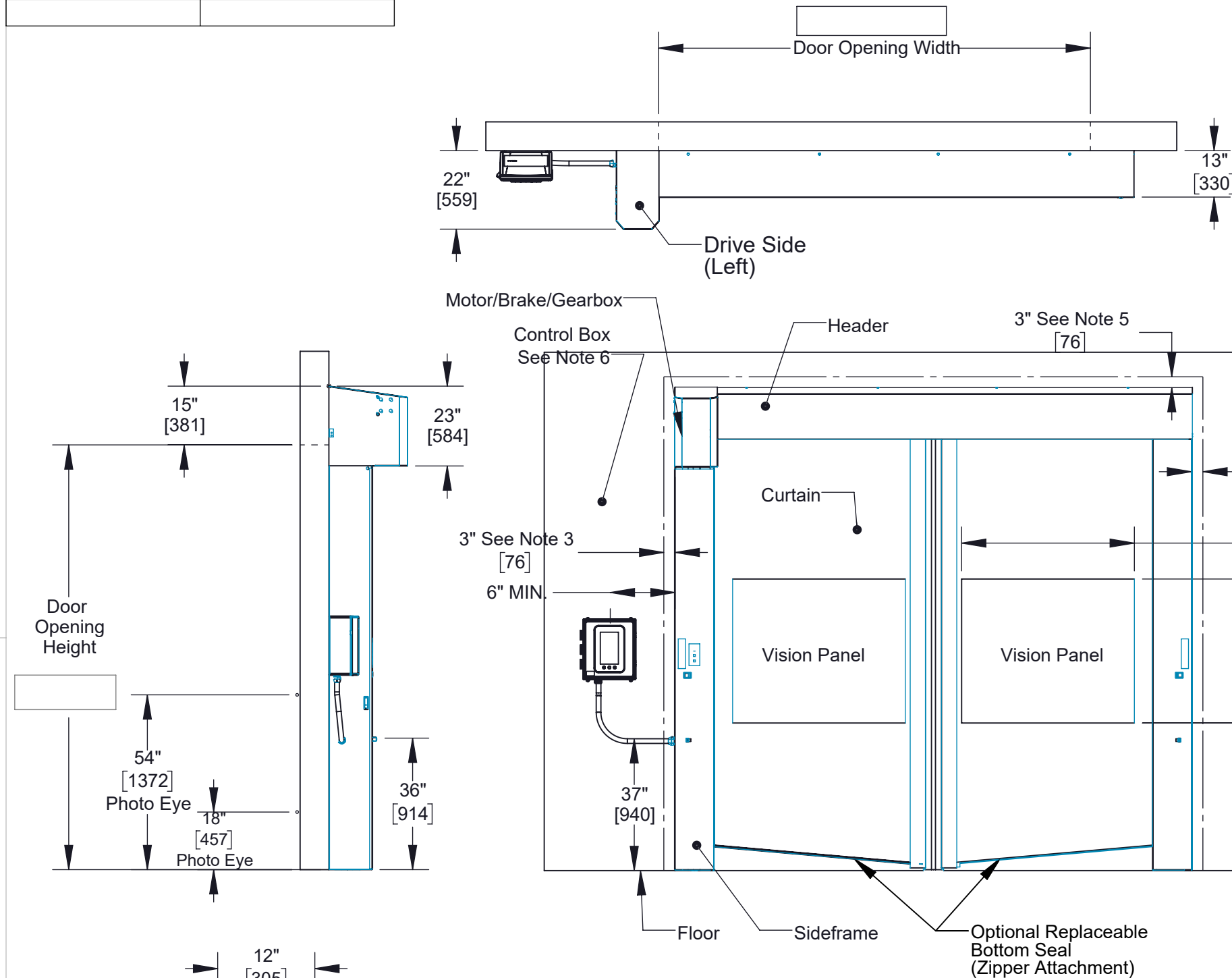
REVISION HISTORY				
REV.	DATE	NOTE	ECN	BY
B	9/6/2017	ICOMM3 UPGRADE	7391	CWAD
C	5/24/2024	ICOMM4 RELEASE	10859	QWM
D	5/24/2024	ISOSPLT REBRAND	10847	CRK

Consult Product Sell/Specification Sheet and Order Form for additional product specifications and all available options.

Notes:

1. Alternate dimensions in brackets are in millimeters.
2. Vision height is 32" [813] for doors less than 8' [2438].
3. Motor shroud requires min. 3" [76] of side clearance for access.
4. Recommended sideframe installation clearance is 3" [76].
5. Header shroud requires min. 3" [76] of top clearance for access.
6. Fiberglass Control Box (std.) 14" [356] x 16" [406] x 8" [203], Stainless Control Box (opt.) 16" [406] x 19" [482] x 8" [203]. Step down transformer provided with 575V controls 9" [229] x 10" [254] x 7" [178] Standard Graphical User Interface.
7. LEFT HAND DRIVE (SHOWN)
 RIGHT HAND DRIVE (7824A001)

APPROVED	<input type="checkbox"/> YES	<input type="checkbox"/> NO
Approved By: _____		
Date: _____		



FINISH		MATERIAL	
CONFIDENTIAL		DRAWN BY CDH	
UNLESS OTHERWISE SPECIFIED DIMENSIONS ARE IN INCHES.		DRAWN DATE 10/19/2016	
TOLERANCES:		INITIAL ECN 7092	
.X = ±.050		DATE ISSUED 10/19/2016	
.XX = ±.010		REFERENCE	
.XXX = ±.005		ALL SHEETS ARE THE SAME REVISION STATUS	
ANGLE = ±1.0°		DO NOT SCALE DRAWING	
THIRD ANGLE PROJECTION		TITLE	
© 2017 RITE-HITE® DOORS INC.		ARCHITECTURAL APPROVAL	
		ISOSPLT	
		LEFT HAND DRIVE	
		SIZE MODEL	DWG NO
		B ISOSPLT	7824A002
		SCALE 1:36	PART# -
		SHEET 1 OF 1	

4

3

2

1

B

B

A

A

4

3

2

1