

ISO-Clean® Split Door

Split-center design. Split-second performance. Rite-Hite® ISO-Clean Split Door cleanroom door boosts efficiency, productivity and safety in a simple, reliable, compact design.

Split-center design

Bi-parting door features spring tube design to collect the curtain in the side frames and reduce overhead contaminants.

Accelerated thinking

Variable frequency drive for an unmatched peak speed of up to 120"/sec (3 m/sec) allows for maximized productivity, less air movement and better separation between zones.

FDA and cGMP compliant

Smooth curtain fabric and stainless steel components for easy wipe down and corrosion resistance. Recommended for ISO 8 Cleanrooms.

Safer work environments

Two large vision windows and immediate top-to-bottom visibility decreases blind spots.

Superior auto reverse

Obstruction sensing reversing system uses (3) photo eyes and a torque sensor.

Impact protection

Flex design curtain reduces downtime and damage from accidental impact.

Replaceable seal

Replaceable bottom seals for easy maintenance.

Communication

Rite-Hite Doors has a series of light communication products to help reduce common collision accidents between forklifts and pedestrians. SafeAlert™ System, LED Pre-Announce and LED Virtual Vision available.



Smart, Connected with Rite-Hite ONE

The Rite-Hite ONE Control Tower provides real-time visibility into data produced by Rite-Hite's line of smart, connected loading dock and high-speed door equipment, empowering customers to act on meaningful analytics that optimize facility throughput, prioritize maintenance, and help mitigate safety incidents.



SafeAlert™ System



Door-Commander™ Controls

Specifications

Speed

- » Peak speed up to 120" (3 m)/sec with standard variable frequency drive. Top speed is dependent on door size
- » Closing speed 40" (1 m)/sec

Size

- » Minimum - 5'0" w x 7'0" h (1524 mm x 2134 mm)
- » Maximum - 10'6" w x 11'6" h (3200 mm x 3505 mm)

Curtain material

- » 40 oz. PVC in blue or white
- » Replaceable bottom seals
- » Large clear vision

Side frames and header cover options

- » Stainless steel (FDA & USDA compliant materials)

Electrical Requirements

- » Single-phase: 220V-240V
- » Three-Phase: 208V, 230V, 400V, 460V, 575V

Door-Commander™ Advanced Controls

Industry's only 10" (254 mm) LCD touch screen interface that provides increased safety by allowing an individual to simply access the control box settings without wearing the necessary PPE often required for accessing a live electrical panel.

Control box

- » i-COMM™ 4 Digital Controller, variable frequency drive.
- » Pre-wired and factory tested.
- » Standard fiberglass NEMA 4X.

Safety features

- » Three thru-beam photo eyes mounted at 18" (457 mm), 36" (914 mm) and 54" (1372 mm) from the floor and obstruction sensing reversing system. Bi-part design provides enhanced visibility.
- » Non Powered Opening Option – Allows the door to be opened in the event of an emergency or power outage.

Limited warranty

Five (5) Year for motor, brake and gearbox.
Two (2) Year on all mechanical and electrical parts.
One (1) Year labor.

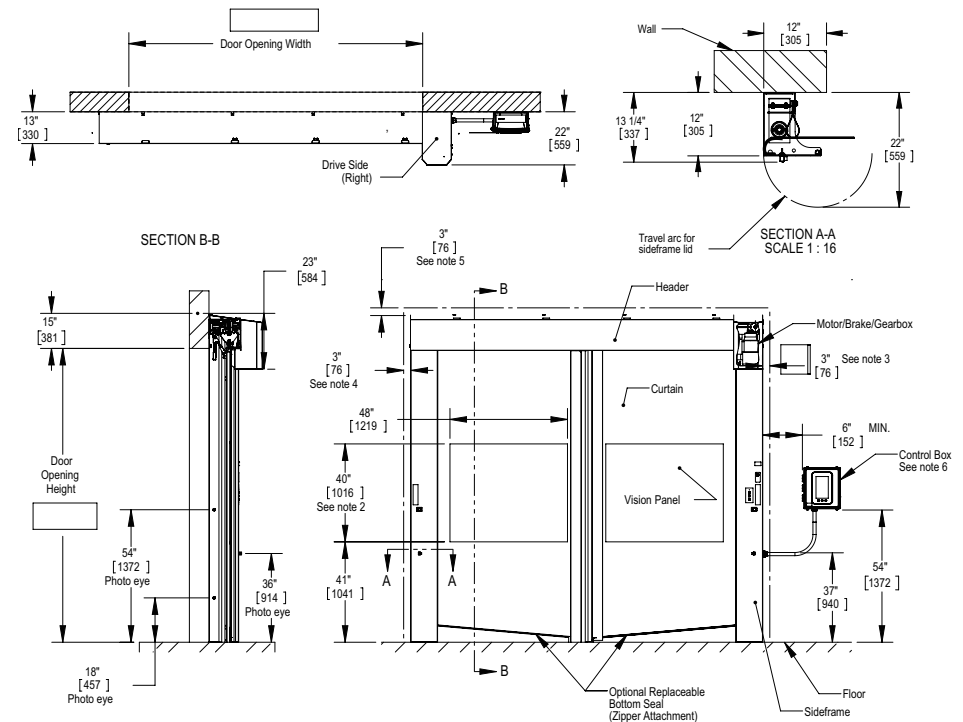
Rite-Hite extended warranty

Seven (7) Year drive system.
Three (3) Year fabric/panel, electrical & mechanical.
Two (2) Year labor.

ISO-CLEAN® SPLIT DOOR

Notes:

1. Alternate dimensions in brackets are in millimeters
2. Vision height is 32" [813] for doors less than 8'0" [2438]
3. Motor shroud requires min. 3" [76] of side clearance for access
4. Recommended sideframe installation clearance is 3" [76].
5. Header shroud requires min. 3" [76] of top clearance for access
6. Fiberglass Control Box (std.) 14" [356] x 16" [406] x 8" [203].
Stainless Control Box (opt.) 16" [406] x 19" [482] x 8" [203]



Milwaukee, Wisconsin, USA

www.ritehite.com

P 414-355-2600 (800-456-0600)

F 414-355-9248

Rite-Hite®, ISO-Clean® Split Door, SmartSeal™, SafeAlert™, and Door-Commander™ Advanced Control System are trademarks of the Rite-Hite Holding Corporation. Rite-Hite products may be covered by one or more U.S. Patents with other U.S. and foreign patents pending. Patent coverage: www.ritehite.com/patents. The information herein is provided as a general reference only regarding the use of the applicable products. The specifications stated here are subject to change. Manufactured by Rite-Hite Doors, Inc.