

REGISTER
YOUR WARRANTY



Photos illustrating products are non contractual.

SANUVAIR® S1000

AIR PURIFICATION UNIT WITH FILTERS

Commercial Model

IMPORTANT SAFETY INSTRUCTIONS

READ AND SAVE THESE SAFETY INSTRUCTIONS BEFORE USING THIS PRODUCT.

Read and follow all instructions contained in the manual before using the product. Read the maintenance instructions before opening the UV unit or system. Failure to comply with these instructions may result in injuries or damage to the UV unit or system.

⚠ NEVER EXPOSE EYES OR SKIN TO AN OPERATING UV LAMP. ⚠

1. **Installation and servicing** of UV units or systems (in an air conditioning system or not) **can be hazardous. Only trained and qualified service personnel** should install, repair or service equipment.
2. **Untrained personnel** can perform **basic maintenance** functions such as replacing lamp(s) and/or filter(s). All other operations should be performed by trained service personnel.
3. The unit is not to be used by persons (including children) with reduced physical, sensory or mental capabilities, or lack of experience and knowledge.
⚠ CAUTION: Unit is not a toy. Keep away from unsupervised children. Do not leave children unattended with the unit.
4. **DO NOT hang onto the UV unit or system.**
5. Some UV units or systems could be heavy: Make sure you have a minimum of 2 people to safely move or install these UV units or systems, and make sure you adopt the most ergonomic position possible (use UV unit or system handles, if applicable).
⚠ CAUTION: Installing or maintaining heavy equipment, especially overhead, can cause back pain or other injuries.
6. When installing or servicing an overhead UV unit or system, be careful not to fall off the stepladder. Furthermore, make sure the UV unit or system latches are always in place to prevent falling parts.
⚠ CAUTION: Some parts of some UV units and systems may open suddenly if the UV unit or system is installed high up without its locks.
7. Units that are obviously damaged must not be operated.
8. **⚠ CAUTION:** When working on the UV unit or system, observe precautions on the literature, tags and labels attached to the UV unit or system, and all other safety precautions considered as best practices in the HVAC industry, if applicable.
9. When applicable, local regulation may comprise more restrictive installation and/or certification requirements. The aforementioned requirements prevail on those of this document and the installer agree to conform to these at his own expense.
10. Follow all the safety instructions outlined in this document and respect all local and national codes applicable.
11. All UV units or systems contain a UV-C source. Damage to the housing or unintended use of the UV unit or system may result in harmful UV-C leaks. UV-C may, even in little doses, cause harm to the eyes and skin.
12. **Never expose eyes or skin to an operating UV lamp.** Therefore, **before installing or performing maintenance** on the UV unit or system, **TURN OFF AND DISCONNECT** the UV unit or system **from all power sources** (there may be more than one switch to disconnect) and also disconnect the HVAC system, is applicable.
⚠ CAUTION: Electrical shock may cause injuries or possibly death. **FIRST AID INSTRUCTIONS:** If injured, consult a doctor.
13. UV rays may damage certain types of filters (polymer or plastic); please keep the UV unit or system light away from shining directly on plastic.
14. When installing or performing maintenance on the UV unit or system, it is recommended to **wear safety gloves**. In order to avoid reduced performance of lamp(s), **do not touch lamp glass without gloves**.
15. Just like conventional fluorescent lamps, UV lamps contain a small quantity of mercury: if a lamp breaks, clean and **dispose of with care**. UV lamps can be disposed/recycled after use in the same way as any other fluorescent lamps. Contact and follow the specific instructions of your local and national authorities.
- 15.1. Dispose of unit or system according to the specific instructions and standards of your local and national authorities.
16. **Use only specified SANUVOX branded replacement UV lamps for your UV unit or system.** Use of any other lamps will void your warranty and can result in damage to the UV unit or system.
17. Sanuvox UV units or systems are not waterproof. **DO NOT INSTALL OUTDOORS OR IN WET LOCATION** unless specified otherwise.
18. Use of this unit or system supplements, but does not replace, infection control best practices. Users must follow all these practices, particularly with regard to cleaning and disinfecting surfaces.

SAVE THESE INSTRUCTIONS

For any inquiries on a UV unit or system, contact:
Robert Smith
 146 Barr St, Saint-Laurent
 Quebec, CA, H4T 1Y4
 1-888-726-8869
 techsupport@sanuvox.com

Installation Date: _____ Installed by: _____

Installer Contact Info.: _____

TABLE OF CONTENTS

△ IMPORTANT SAFETY INSTRUCTIONS △	1
TABLE OF CONTENTS	2
ABOUT THE PRODUCT	3
COMPONENTS	3
How it Works	3
ACCESSORIES & KITS	3
SETUP & INSTALLATION	4
What you will need	4
What's included	4
Step by Step Installation UV Lamp(s) & Filters	4
Step by Step Installation Added Ducts	6
OPERATION	6
How to Operate your Product	6
How to Select Speed	6
MAINTENANCE	7
How to Replace Lamp	7
Step by Step Lamp Replacement	7
How to Replace Filters	8
Step by Step Filter Replacement	8
How to Clean your Product	8
STORAGE	9
ULTRAVIOLETS	9
ELECTRICAL RATINGS, POWER CONSUMPTION & AVAILABLE VOLTAGE	9
TROUBLESHOOTING	9
Problems & Solutions Table	9
WARRANTY	10
CUSTOMER SERVICE	10

ABOUT THE PRODUCT

The Sanuvair® S1000 is designed for air purification of large rooms where HVAC systems are not available or accessible. This stand-alone unit helps reduce microorganisms from the air in a room up to 10,000 cubic feet.

For information or recommendations on how to size your specific application, please call SANUVOX at 1-888-726-8869.

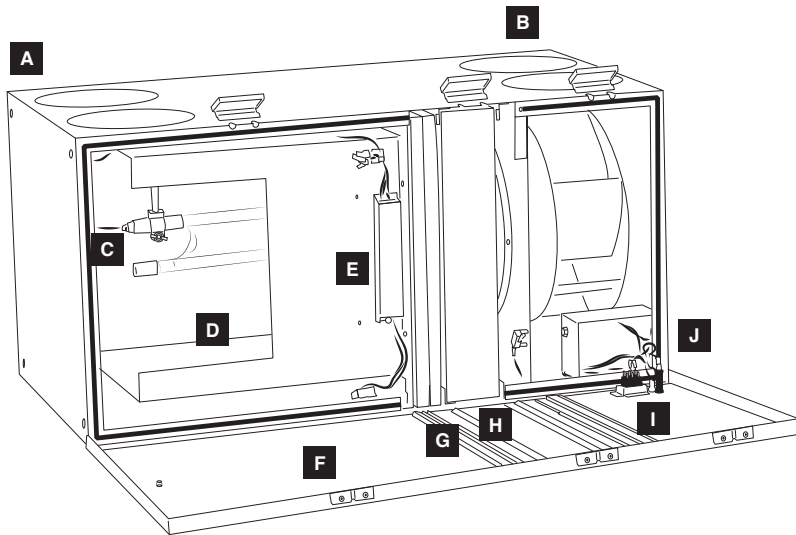
COMPONENTS

How it Works

This unit is constructed of a lightweight aluminum case and has a three-stage purification process:

1. Air is pulled into two return ports through an aluminum reflection chamber that houses 1 to 4 high intensity UV lamps.
2. A 2" MERV 8 prefilter captures the large particles.
3. A 4" MERV 15 filter captures 95% of 0.3 to 1 micron sized particles.

The Sanuvair® S1000 has versatile mounting options.



- A. Holes for 1 x pair of 8" inlet collars
- B. Holes for 1 x pair of 8" outlet collars
- C. 1 to 4 x 16" UV 'J' lamps
- D. Aluminum reflecting chamber
- E. 1 to 4 ballasts
- F. Door
- G. 1 x 2" MERV 8 prefilter
- H. 1 x 4" MERV 15 filter
- I. Safety cut-off switch
- J. Power 120 Volt or 230 Volt

ACCESSORIES & KITS

The following optional accessories and/or kits work great with your product (sold separately).

HEPA filter
FTR-12



HEPA filter (20" x 20" x 4")

For instruction manuals or information about your optional accessories and/or kits, please call SANUVOX at 1-888-726-8869 or visit www.sanuvox.com.

SETUP & INSTALLATION

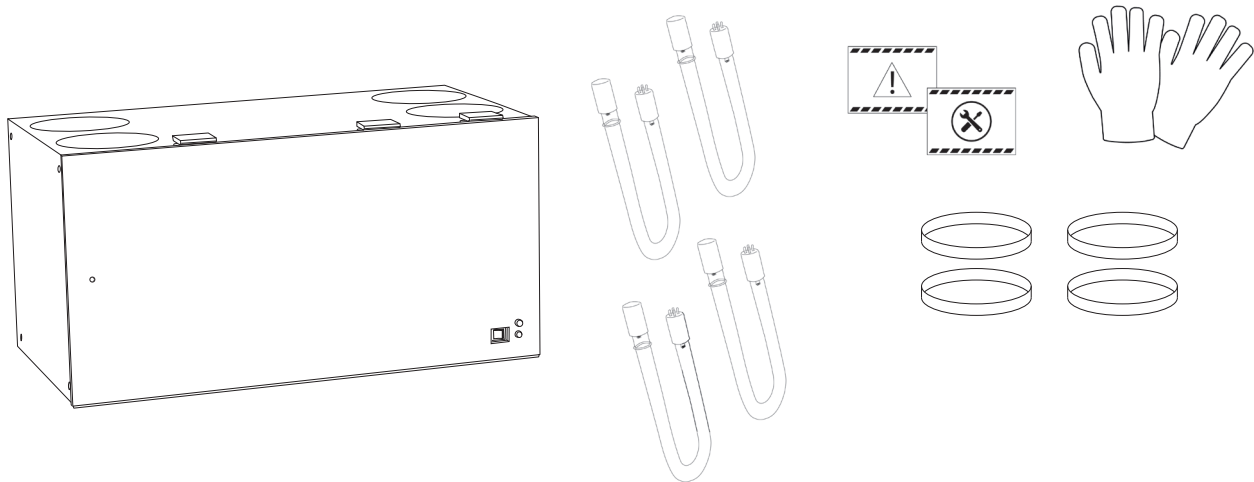
What you will need

Utility knife, scissors, suitable wall plugs and screws (as needed), screwdriver and pliers.

⚠ CAUTION: Handle your product with care to avoid breaking parts. Make sure you have a free and safe space to unpack, install and setup your product. Confirm you have access to the necessary power source for the product requirements (see unit or system label). If you have any questions regarding the installation instructions, call SANUVOX at 1-888-726-8869.

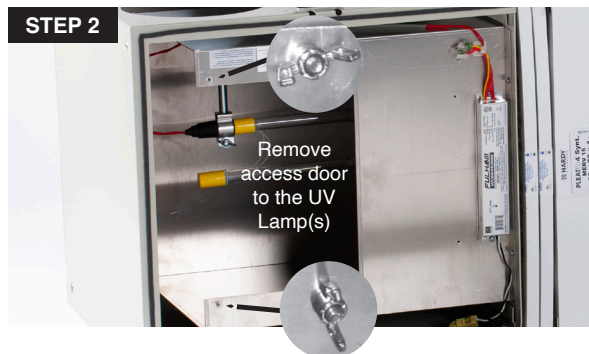
What's included

The Sanuvair® S1000, a 2" MERV 8 prefilter, a 4" MERV 15 filter, UV lamps (1 to 4)," 6' of power cord and a basic installation kit.



The installation kit includes: a UV caution decal, a maintenance decal, a pair of cotton gloves, a pair of 8" inlet collars, a pair of 8" outlet collars, Phillips screws (12) and larger screws for installation (4).

Step by Step Installation | UV Lamp(s) & Filters

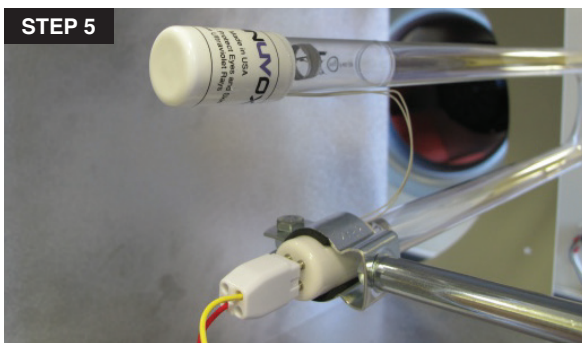


1. **Open the unit access door** of your S1000 unit.
2. **The UV lamp(s) will be installed in the Aluminum Reflecting Chamber.** To slide out the Aluminum Chamber, remove the two butterfly bolts and screws which secure it in place.

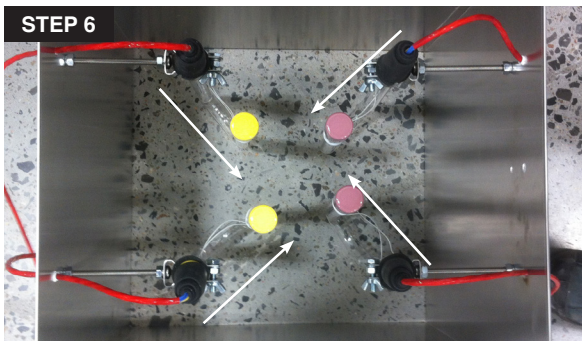


3. Adhere the included foam gasket (included in the Lamp box) to the porcelain end-cap with the 4 pins.
4. Insert the end-cap with foam gasket into the clamp* assembly and tighten. Be careful not to over tighten as it may result in end-cap breaking.

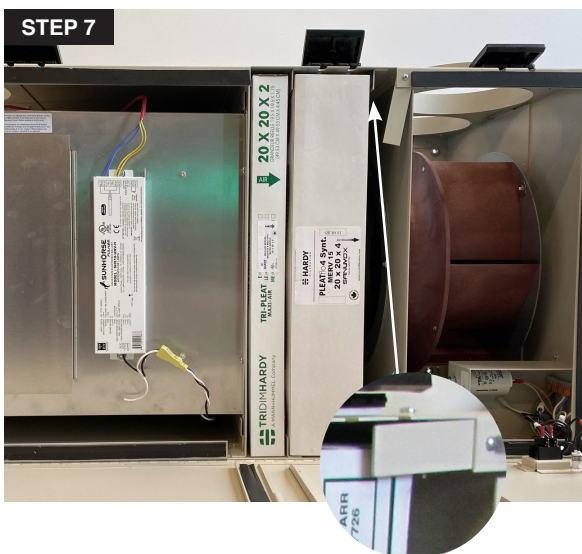
NOTE: A clamp (or up to four, if you ordered additional lamps) is there to hold the lamp(s).



5. Insert the white-plug into the UV Lamp's 4 pins. The plug will only fit in two of four ways. Either way is fine. The exposed wire-set is Teflon coated and is resistant to UV exposure.



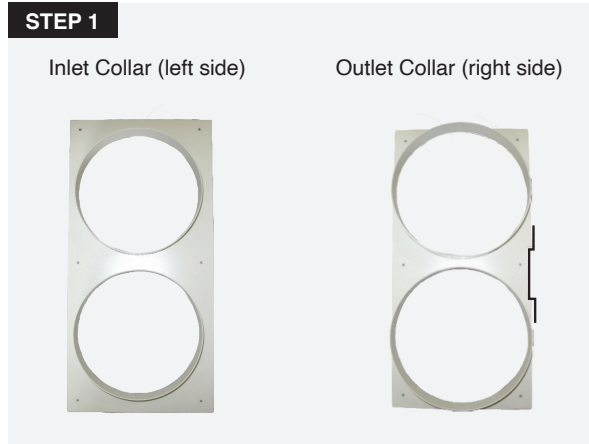
6. **UV Lamp(s) and Ballast Position:** The lamp should be positioned towards a central point in the middle of the unit's aluminum reflection chamber. For models with multiple lamps, you must position the lamps in a 'X' to bring them closer to the middle and optimize the UV dose of the unit.



7. **Insert Filters:** Insert the MERV 8 prefilter and the MERV 15 filter. Follow the arrow for airflow for proper filter direction.
8. After the main filter is installed, close the latch to secure the filter in place. Close the door of the blower compartment.

You are now ready to install your S1000 unit.

Step by Sep Installation | Added Ducts



1. **Install Inlet / Outlet Collars (each collar is a set of 2" x 8" round inlet and outlet):** Open the access door and insert the two pairs of collars into the S1000 unit. Align the holes and screw down each pair of collars from the top of the unit with the included philips screws (6 screws per collar).

NOTE: Pay special attention to the orientation of the notch on the right side collar. The notch (highlighted in black) should be pressed up against the right side of the SANUVAIR® S1000.



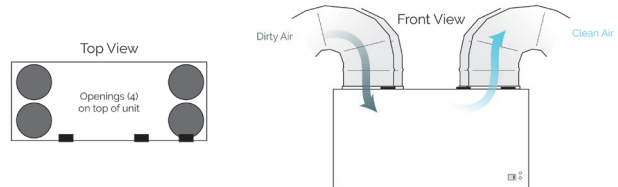
2. **Secure the unit to the wall OR ceiling,** using suitable supports, wall plugs and screws (not included). Make sure you have a power outlet nearby to plug the unit into.

CAUTION: Your S1000 unit is bulky. Make sure that there are **always two people** to lift and handle it to avoid any injuries.



3. **Install your 8" pipes** (rigid in aluminum or galvanized or aluminized flexible).

NOTE: When ducting-in the unit, avoid 90 degree elbows when possible.



Your new SANUVAIR® S1000 is now ready to operate!

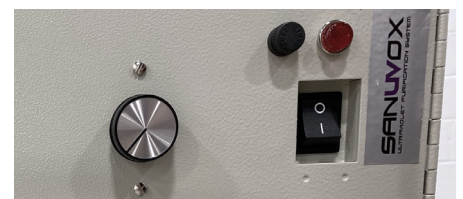
OPERATION

How to Operate your Product

The Sanuvair® S1000 is an automatic unit: once it's installed and plugged in, simply press the power switch to turn it ON.

How to Select Speed

The Sanuvair® S1000 features a variable speed control, located on the front of the unit. It is recommended that the unit be operated at its highest speed at all time to maximize the benefits of the air purifier.



MAINTENANCE**How to Replace Lamp**

Replace UV lamps every 2 years. Replacing lamp on the Sanuvair® S1000 is quick and easy. Simply turn off the power source, unlatch and open the access door, unscrew the metal access plate to the reflection chamber, remove and dispose of old lamps, replace with new Sanuvox branded UV lamps, screw back the metal plate, close the access door and turn power source back on. See below for detailed step by step instructions.

⚠ **CAUTION:** In order to avoid reduced performance of lamps, do not touch lamp glass without gloves.

Step by Step Lamp Replacement

1. Unlatch and open the access door and unscrew the metal access plate to the reflection chamber.

⚠ **CAUTION:** Before installing or performing maintenance on the unit or system, **TURN OFF AND DISCONNECT the unit or system from all power sources.**



2. **Prepare the new lamp.** Remove the contents from packaging. Only after you have visually inspected the UV lamp should you break the security seal on the underside of the cardboard sleeve. Be sure to wear the **cotton gloves** (included) guaranteeing a clean lamp free from fingerprints.

NOTE: Fingerprints on the lamp might negatively impact the UV output of the lamp.

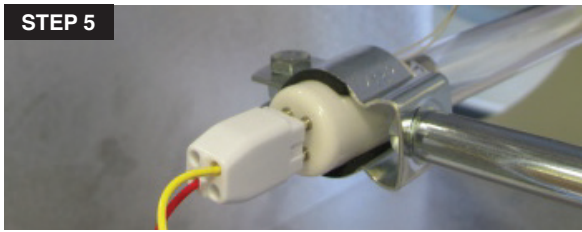


3. While holding the new UV lamp by its porcelain end-cap, slide it into the metallic reflection chamber.



4. Slide the porcelain tip through the retention clamp.

NOTE: Make sure the lamp is horizontal in this section and not touching the metal walls.



- Carefully push the white connector onto the four pins. The plug is designed so it can only be installed one way. You may have to rotate the socket 90° to line up the pins with the holes. The connector will fit into position.

NOTE: Too much force applied from the opposite end-cap may break the lamp.

Repeat steps 2 through 5 for each additional lamp.



- Screw back in place the metal plate and close the access door.

How to Replace Filters

Replace prefilter every 3 to 6 months or as needed.

Replace MERV 15 filter every 1 to 3 years or as needed. Check regularly to maintain maximum performance of your unit.

Step by Step Filter Replacement



- Open the filters and motor access door at the front of the unit.** Start by unlocking the access door latches.



- After opening the unit's access door, **grasps both edges of the MERV 15 filter and pull with equal force to slide it out.**



- Unpack the new MERV 15 filter and place it in the unit, then close the access door. Repeat step 2 and 3 for the pre-fitter, as needed.

NOTE: Make sure to install filters according to air flow direction for maximum performance.



How to Clean your Product

Maintenance of the unit should be performed at the regular intervals to keep the benefits of the UV air purifier.

For optimal performance, the lamp should be kept free of dust and residue deposit. Clean when necessary with mild soap or alcohol. Always spot test the cleaner to make sure it does not damage the surface.

Once a year or as needed, clean the interior of the unit (wall and motor plate), with mild non-abrasive soap. It is recommended to use products that are environmentally friendly.

⚠ CAUTION: Under no circumstance should water be sprayed or splashed onto the product.

STORAGE

The Sanuvair® S1000 unit is fixed installation and therefore, requires no specific storage.

ULTRAVIOLETS

Ultraviolet wavelengths (UV) emitted by Sanuvox units and systems are identical to ultraviolet produced by the sun. UVC damage nucleic acids (DNA/RNA) of microorganisms, which inactivates them. Unlike conventional UV lamps on the market, Sanuvox units and systems use a patented process that delivers a maximum dose of UV to the moving air stream or surfaces.

⚠ CAUTION: Never expose eyes or skin to an operating UV lamp.

ELECTRICAL RATINGS, POWER CONSUMPTION & AVAILABLE VOLTAGE

The Sanuvair® S1000 has a power consumption of up to 750W.
 The product is rated at 120/240 VAC, 50/60 Hz.
 See product label to confirm power consumption of your specific unit or system.

NOTE: IF YOU EXPERIENCE A PROBLEM, PLEASE CONTACT CUSTOMER SERVICE FIRST OR SEE YOUR WARRANTY. DO NOT RETURN THE PRODUCT TO THE ORIGINAL PLACE OF PURCHASE. DO NOT ATTEMPT TO OPEN THE PRODUCT OR TAMPER WITH ITS COMPONENTS WITHOUT CONTACTING CUSTOMER SERVICE FIRST. DOING SO MAY VOID YOUR WARRANTY AND CAUSE PERSONAL INJURY OR DAMAGE TO THE PRODUCT.

TROUBLESHOOTING

If your product is not working properly, refer to the following.

What you will need

A Phillips No. 2 screwdriver, a non-magnetic 5/16" nutdriver and spare parts.

Problem	Possible Cause	Solution
Unit doesn't come ON.	- There is no power to the electrical outlet.	- Make sure the power outlet is working. - Make sure the unit is plugged in to 120V outlet.
	- The On/Off switch is not ON.	- Push the ON button on the display.
	- The power cord is damaged.	- Replace power cord.
	- The micro switch / cut-off switch is not well engaged.	- Make sure the lamp door is well closed. - Make sure the lamp door pin pushes on the micro switch / cut-off switch.
Unit comes ON, but lamp is OFF: its "glow" isn't visible through the outlet louver.	- Lamp and/or ballast are defective.	- Get a genuine replacement lamp and/or ballast. - Replace lamp and/or ballast.
Unit comes ON and lamp is ON, but the motor is not turning or is making rattling noise.	- Motor is defective. - Motor wire connection is not properly connected.	- Replace motor. - Check motor wire connections, making sure there are no loose wires..
Unit operates only on one speed.	- Defective speed control or loose wiring.	- Check wiring or replace speed control.

Contact your contractor for all your needs in terms of replacement parts: power cord, control panel display, UV lamp, ballast, filter, grill, fan motor, stand, handle, etc.

WARRANTY

You should first read all instructions before attempting to use this product. For this warranty to be valid, keep a copy of the proof of purchase.

REGISTER
YOUR WARRANTY
ONLINE AT
www.sanuvox.com



UV lamp	2 years
Ballast	3 years
Electric Motor	1 year

- A. This limited warranty applies to repair or replacement of product found to be defective in material or workmanship. This warranty does not apply to damage resulting from abusive, unreasonable use or supplemental damage. Defects that are the result of normal wear and tear will not be considered manufacturing defects under this warranty.
SANUVOX IS NOT LIABLE FOR INCIDENTAL OR CONSEQUENTIAL DAMAGES OF ANY NATURE, ANY IMPLIED WARRANTY OF MERCHANTABILITY OR FITNESS FOR A PARTICULAR PURPOSE ON THIS PRODUCT IS LIMITED IN DURATION TO THE DURATION OF THIS WARRANTY.
 Some jurisdictions **do not** allow the exclusion or limitation of incidental or consequential damages or limitation on how long an implied warranty last, so the above limitations or exclusions may not apply to you. This warranty gives specific legal rights, and you also may have other rights which vary from jurisdiction to jurisdiction. This warranty applies only to the original purchaser of this product from the original date of purchase.
- B. At its option, SANUVOX will repair or replace this product if it is found to be defective in material or workmanship.
- C. This warranty does not cover damage resulting from any unauthorized attempts to repair or from any use not in accordance with the instruction manual.
- D. This warranty does not cover the filters, prefilters or other accessories (if included), except for material or workmanship defects.

Call us toll-free at 1-888-726-8869 or email: info@sanuvox.com

Please be sure to specify product name.

NOTE: IF YOU EXPERIENCE A PROBLEM, PLEASE CONTACT CUSTOMER SERVICE FIRST OR SEE YOUR WARRANTY. DO NOT RETURN THE PRODUCT TO THE ORIGINAL PLACE OF PURCHASE. DO NOT ATTEMPT TO OPEN THE PRODUCT OR TAMPER WITH ITS COMPONENTS WITHOUT CONTACTING CUSTOMER SERVICE FIRST. DOING SO MAY VOID YOUR WARRANTY AND CAUSE PERSONAL INJURY OR DAMAGE TO THE PRODUCT.

CUSTOMER SERVICE

TO ORDER REPLACEMENT PARTS

PLEASE CONTACT YOUR CONTRACTOR OR SANUVOX CUSTOMER SERVICE

Toll-Free Phone #: 1-888-726-8869

Email: info@sanuvox.com

Website: www.sanuvox.com

Please be sure to specify product name.

Replacement parts for this product

BST120/277SHS	Ballast with multi-voltage input of 120-277 VAC, 50/60 Hz
LMPHGJ160	T6 High Intensity 16" 'J' shaped UV lamp
FTR-17	MERV 8 Prefilter or the MERV 8 carbon prefilter # FTR-2A
FTR-1	MERV 15 Filter
FTR-12	HEPA Filter
FLEX0825	8" diameter flexible tubing, 25' long

⚠ WARNING: Use only specified SANUVOX branded replacement UV lamps with your unit or system. Use of any other lamps will void your warranty and can result in damage to the unit, system and/or lamp(s).