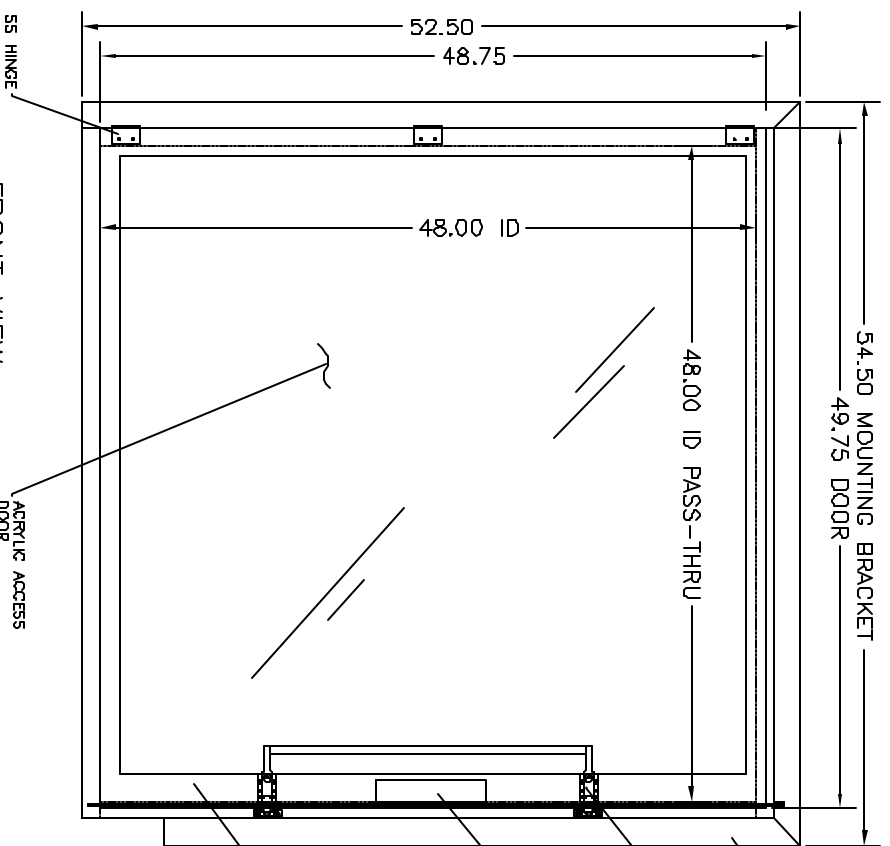


LEFT SIDE VIEW
MATERIAL: WHITE FORMICA LAMINATE



FRONT VIEW
MATERIAL: WHITE FORMICA LAMINATE

- WORK ORDER DISTRIBUTION**
- FILE
 - LAMINATE SHOP
 - SHEET METAL SHOP
 - ASSEMBLY SHOP
 - SHIPPING

ENGINEERING APPROVAL

ENGINEERING APPROVAL

CUSTOMER APPROVAL

LTR	DESCRIPTION	DATE	APPD	CONFIG	DESCRIPTION
NC	INITIAL RELEASE			MATERIAL SPEC. LAMINATE FORMICA ACRYLIC	FINISH SPEC.

UNLESS OTHERWISE SPECIFIED, DIMENSIONS ARE IN INCHES
TOLERANCES ON:

XX DECIMALS ± .06	X ±	1"
XXX DECIMALS ± .010	X/X ±	1/16

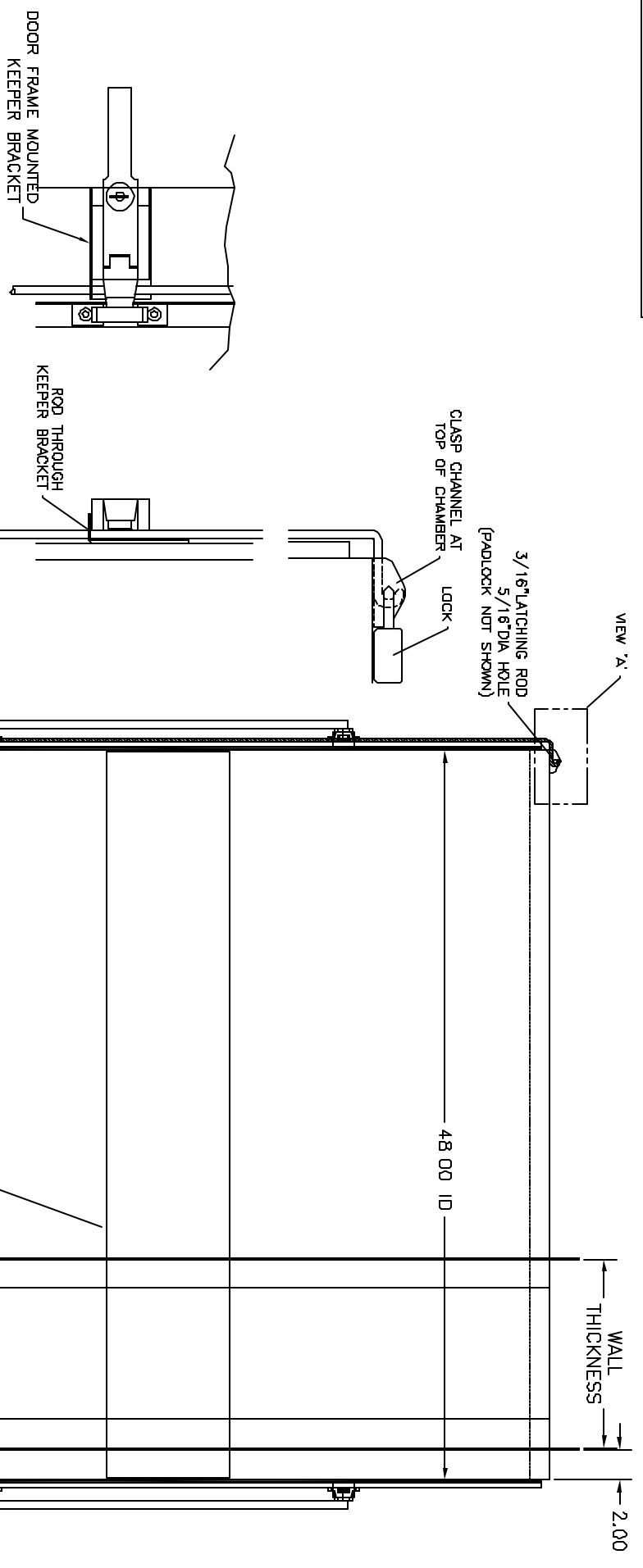
DRAWN: FERREER DATE: 10.28.00
ENGR: TUCKER DATE: 10.28.00

Terra Universal

PROPRIETARY & CONFIDENTIAL
ALL RIGHTS RESERVED BY
TERRA UNIVERSAL
DUPLICATION OR COPYING PROHIBITED

TITLE: PASS-THROUGH, LAMINATE, FLOOR MOUNT
48" W x 48" D x 48" H ID

1897Z
A 1993-03-15813
NEXT ASSY: USED ON SCALE NONE PASSTHROUGH SHEET 1 OF 2



FRONT VIEW 'A'
DOOR LOCKING CLASP
7900-00-15457

RIGHT SIDE VIEW
MATERIAL: WHITE FORMICA LAMINATE

1993-63-15459
MECHANICAL INTERLOCK

ENGINEERING APPROVAL

ENGINEERING APPROVAL

CUSTOMER APPROVAL

UNLESS OTHERWISE SPECIFIED, DIMENSIONS ARE IN INCHES TOLERANCES ARE:	
XX DECIMALS ± .06	X ± .1"
XXX DECIMALS ± .010	X/X ± 1/16
DATE	DATE
10.28.00	10.28.00
DRAWN: FERRER	
ENGINE: TUCKER	
SIGNATURES	
TERRA UNIVERSAL 1807Z	
PROJECT: PASS-THROUGH, LAMINATE, FLOOR MOUNT	
DRAWING NO: 1993-03-15813	
SHEET: 2 OF 2	
TITLE: PASS-THROUGH, LAMINATE, FLOOR MOUNT	
48"W x 48"H ID	
MATERIAL SPEC: FINISH SPEC:	
CONFIG: -1	
DESCRIPTION: DOOR LOCKING CLASP	
DATE: 10.28.00	
APPROVAL: TUCKER	
INITIAL RELEASE: TUCKER	
LITERATURE: NONE	