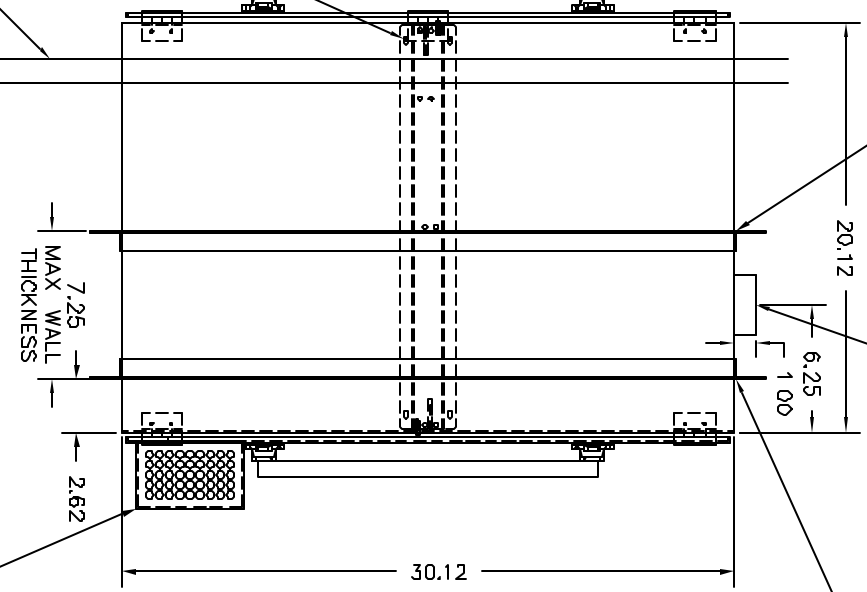


DUAL PANE SAFETY GLASS  
COLD ROOM SIDE

G.C. TO COORDINATE  
LOCATION OF COOLER  
TO SUIT

6705-53  
FIRMLock  
MECHANICAL  
INTERLOCK



CUSTOM MOUNTING BRACKET  
1994-08-2-52620  
SHIPPED LOOSE FOR MOUNTING AT  
INSTALLATION

3" DIA.  
EXHAUST FLANGE

CUSTOM MOUNTING BRACKET  
1994-08-2-52620  
WELED IN PLACE

6705-24  
INLET ULPA FOR STAINLESS  
STEEL PASS-THROUGH  
VENTILATION SYSTEM  
LATE INACTIVATION SIDE

LTR	DESCRIPTION	DATE	APPD	-1	CONFIG	DESCRIPTION
NA	INITIAL RELEASE					
(A)	SEE ECO SHEET	10/12/06	L.A.		MATERIAL SPEC.	FINISH SPEC.
(B)	SEE ECO SHEET	10/24/06	JY		304 SS CONV WELD	ELECTROPOLISH
UNLESS OTHERWISE SPECIFIED DIMENSIONS ARE IN INCHES						
TOLERANCES UNLESS OTHERWISE SPECIFIED:						
.XX DECIMALS ± .03 X± 1"						
.XXX DECIMALS ± .010 X/XX ± 1/64						
DRAWN	SIGNATURES	DATE				
ENGR	LUIS AVILA	10/12/06				
Terra Universal			TITLE			
			PASS THROUGH, SS			
			30.120WX20.120DX30.120H			
			SERIES 100 BIOSAFE			
			A 636-10A-2-52289			
			NEXT ASSY USED ON SCALE NONE			
			PASS THROUGH SHEET 1 OF 2			